










SENARUM BORA BORA

2019-09-09 (F) LOI LO19194160
Couleur : fegato marrone (liver tricolore)
[fiche affixe](#)



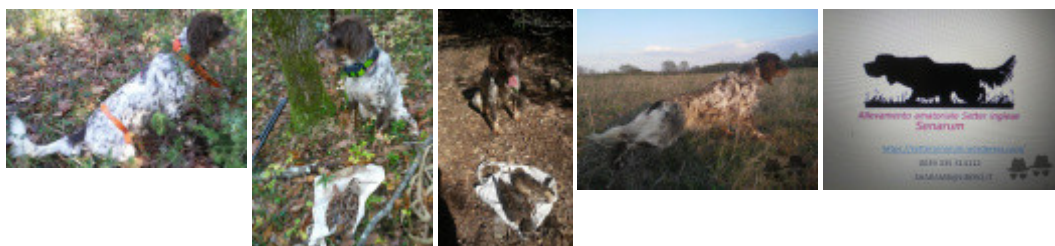
hosted by setter-anglais.fr

<p>Père MONDO 2012-01-29 (M) LOI LO1230272 (Ch. Ital. Lav.) - liver</p> 	<p>LEADER 2007-07-01 (M) LOI LO0867816 (Ch. Int. Lav., Camp. Ripr.) - bluebelton</p>	<p>KAPO 2003-11-10 (M) LOI LO0439835 (Ch IT GQ) - bluebelton</p> 	<p>NERO 1997-03-29 (M) LOI LO9817889 (Ch T, Ch GQ) - bluebelton</p>	
	<p>BRIGA 2006-08-27 (F) LOI LO0744419 (Ch. Ital. Lav.) - bluebelton</p>	<p>MARTIANISIUM FRINA 2002-01-22 (F) LOI LO0247253 (Camp. Ripr.) - bluebelton</p>	<p>KYBA 1998-01-01 (F) LOI LO98118951 - lemon</p>	<p>MICO DEL MUGNONE 1996-04-21 (M) LOI ST544163 - bluebelton</p>
<p>Mère AMARENA 2016-04-29 (F) LOI LO16106928 - bluebelton</p> 	<p>CASH 2012-01-10 (M) LOI LO1232757 (Ch. It. Lav) - bluebelton</p> 	<p>PIANIGIANI'S RASTY 2004-01-10 (M) LOI LO0462422 - bluebelton</p>	<p>PIANIGIANI'S ROCHY 1996-07-30 (M) LOI ST552183 (CH, Ch. Int. Lav., Camp. Ripr.) - bluebelton</p>	
	<p>DESIANENSIS ZOE 2011-06-02 (F) LOI LO11100668 - lemon</p> 	<p>LENA 2005-08-13 (F) LOI LO0637561 (Ch. Ital. Lav.) - bluebelton</p>	<p>DENNY 1997-07-15 (F) LOI LO98124814 - bluebelton</p>	<p>ASTRO 1998-04-01 (M) LOI LO997097 - bluebelton</p>
	<p>BOBET DI LORO PICENO 2003-08-10 (M) LOI LO041853 (Camp. Tr. (Ch GQ), Ch Ital. Lav., ChIT) - tricolore</p> 	<p>LENDA 2004-09-15 (F) LOI LO0534269 - tricolore</p>	<p>ASTRO 1998-04-01 (M) LOI LO997097 - bluebelton</p>	<p>LINDA 2004-09-15 (F) LOI LO0534269 - tricolore</p>
	<p>DESIANENSIS GRETA 2008-06-15 (F) LOI LO0945223 - bluebelton</p>	<p>SIRIO 2005-11-14 (M) LOI LO0669691 (Camp. Assoluto, Camp. Ripr.) - tricolore</p> 	<p>BREZZA 2006-08-27 (F) LOI LO0744421 - bluebelton</p>	<p>MARTIANISIUM LUTER 2001-05-05 (M) LOI LO01138037 (CH GQ (Camp. Tr.)) - bluebelton</p>
<p>DESIANENSIS VIOLET 2004-03-12 (F) LOI LO0499175 - bluebelton</p>	<p>PIANIGIANI'S RASTY 2004-01-10 (M) LOI LO0462422 - bluebelton</p>	<p>MARTIANISIUM FRINA 2002-01-22 (F) LOI LO0247253 (Camp. Ripr.) - bluebelton</p>	<p>MARTIANISIUM LUTER 2001-05-05 (M) LOI LO01138037 (CH GQ (Camp. Tr.)) - bluebelton</p>	
<p>TRUJBA DI LORO PICENO 1999-09-25 (F) LOI LO0049020 - BIANCO MASCHERA ASIMMETRICA SX E</p>	<p>PIANIGIANI'S RASTY 2004-01-10 (M) LOI LO0462422 - bluebelton</p>	<p>LENA 2005-08-13 (F) LOI LO0637561 (Ch. Ital. Lav.) - bluebelton</p>	<p>PIANIGIANI'S RASTY 2004-01-10 (M) LOI LO0462422 - bluebelton</p>	
<p>RADENTIS NOMAR 1998-03-22 (M) LOI LO98133353 ((CHGQ CHIT / CHIT.B)) - liver</p>	<p>BOBET DI LORO PICENO 2003-08-10 (M) LOI LO041853 (Camp. Tr. (Ch GQ), Ch Ital. Lav., ChIT) - tricolore</p> 	<p>TRUJBA DI LORO PICENO 1999-09-25 (F) LOI LO0049020 - BIANCO MASCHERA ASIMMETRICA SX E</p>	<p>TRUJBA DI LORO PICENO 1999-09-25 (F) LOI LO0049020 - BIANCO MASCHERA ASIMMETRICA SX E</p>	
<p>DESIANENSIS DONNER 2006-10-15 (M) LOI LO0750954 (Camp. Ital. Ass., Camp. Ital. Lav., CH(IT)B, CIT, CIB, CIBT) - lemon</p>	<p>DESIANENSIS DONNER 2006-10-15 (M) LOI LO0750954 (Camp. Ital. Ass., Camp. Ital. Lav., CH(IT)B, CIT, CIB, CIBT) - lemon</p> 	<p>DESIANENSIS GRETA 2008-06-15 (F) LOI LO0945223 - bluebelton</p>	<p>DESIANENSIS DONNER 2006-10-15 (M) LOI LO0750954 (Camp. Ital. Ass., Camp. Ital. Lav., CH(IT)B, CIT, CIB, CIBT) - lemon</p>	

[[Lien...](#)] / Eleveur : Pettorali Fabio / Propriétaire : Pettorali Fabio
Puce : 380260004295185
Estimation des points au pédigrée : 32

Taux de consanguinité (estimation) : 6.6 %

PIANIGIANI'S RASTY (3 X 4) : 0.016052
LENA (3 X 4) : 0.015625
MARTIANISIUM FRINA (3 X 4) : 0.015625
NERO (4,5 X 5,6) : 0.007812
NEGUS (6,6,7,7,7,7 X 7,7,7,8,8,8,8,8) : 0.003784
NORD DI VAL DI CHIANA (6,6 X 6,7,7) : 0.001465
FRANCINI'S LUCA (6,6 X 6,7,7,7) : 0.001465
DECOR LOT (7,8,8,8 X 7,8,8,8,8,8,8) : 0.001129
VANGOGH DELL'AD MONTES (5,7 X 7,8) : 0.000732
KIKA (6 X 6,7) : 0.000488
FRANCINI'S SALLY (6 X 6,7) : 0.000488
FRANCINI'S RAS (7,7 X 7,8,8) : 0.000244
DEM (7,7,8 X 7,8,8,8) : 0.000153
LEM DEL RESEGONE (7,8,8,8 X 8) : 0.000122
FRANCINI'S VANITY (8,8,8,8 X 8,8) : 0.000122
DIK DELLA MARCIOLA (7,8,8,8 X 8,8) : 0.000122
DUN DEL MESCHIO (8,8,8,8,8 X 8) : 0.000092
MERA DELL'ORSONE (7,8 X 8) : 0.000061
OLAF DEL TRE PONTI (7,7 X 8) : 0.000061
DERO (7,8,8 X 8) : 0.000031
AKIM (7,8 X 8) : 0.000031
GAETANO DEL BINARIO (8 X 8) : 0.000031



Note : les données ne sont pas garanties. Elles ont été entrées par les membres sans garantie d'exactitude.