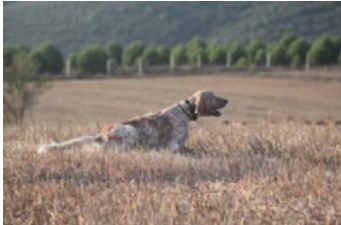

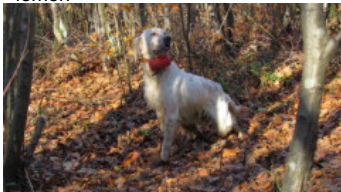




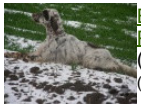



**NERA'S DESPINA**

2018-04-17 (F) LOI ES2508  
Couleur : Fau.PBl.Env. (lemon)  
[fiche affixe](#)



|  |   |  |   |   |
|--|---|--|---|---|
| <p>Père</p> <p><b>DORK</b><br/>2011-09-05 (M)<br/>LOI LO11145762<br/>(Ch. Ital. Lav., Ch. Int. Lav.)<br/>- lemon</p>  | <p><b>YURY</b> 2007-09-07 (M) LOI LO0799411 - lemon</p>    | <p><b>LINDO</b> 2004-06-25 (M) LOI LO051968 - lemon</p>  | <p><b>LINDO DEL CENTRO MARCHE</b> 1997-05-24 (M) LOI LO985111<br/>(Camp. Ital. Bell., Ass.) - lemon</p> |   |
|  | <p><b>HAHA</b> 2006-06-15 (F) LOI LO06125621 - tricolore</p>  | <p><b>NERA</b> 2006-04-29 (F) LOI LO06110398 - bluebelton</p>  | <p><b>DERO</b> 1997-06-10 (M) LOI LO9834782 (Ch. Ital. Lav.) - bluebelton</p>                           | <p><b>NUVOLINA</b> 2001-09-15 (F) LOI LO01209473 - bluebelton</p> |
| <p>Mère</p> <p><b>NERA'S NERA</b><br/>2013-09-29 (F)<br/>705245ES<br/>- lemon</p>                                    | <p><b>SULTAN</b> 2012-05-25 (M) LOI 2676356 - bluebelton</p>   | <p><b>DRAGO</b> 2004-08-18 (M) LOI LO0516816 - tricolore</p>   | <p><b>ROMA</b> 2003-07-02 (F) LOI LO03133996 - bluebelton</p>   |   |
|  | <p><b>BOBET DI LORO PICENO</b><br/>2003-08-10 (M) LOI LO041853 (Camp. Tr. (Ch GQ), Ch Ital. Lav., ChIT) - tricolore</p>  | <p><b>ELLY</b> 2003-08-06 (F) LOI LO0514 - bluebelton</p>  | <p><b>RINGO</b> 2001-08-03 (M) LOI LO01179374 - lemon</p>   | <p><b>CHICCA</b> 1998-06-10 (F) LOI LO0015104 - tricolore</p>     |
|  | <p><b>KAMA</b> (F) 2676357 - bluebelton</p>    | <p><b>ASTOLFO</b> 2001-06-27 (M) LOI LO01174590 - bluebelton</p>   | <p><b>CHICCA</b> 1998-06-10 (F) LOI LO0015104 - tricolore</p>   | <p><b>ASTOLFO</b> 2001-06-27 (M) LOI LO01174590 - bluebelton</p>  |
|  | <p><b>MAROKO OD KARAOTOKA</b><br/>2009-12-21 (M) HR18648 - bluebelton</p>   | <p><b>KELLY</b> 2002-04-25 (F) LOI LO02114718 - bluebelton</p>   | <p><b>TRUJBA DI LORO PICENO</b><br/>1999-09-25 (F) LOI LO0049020 - BIANCO MASCHERA ASIMMETRICA SX E</p> | <p><b>ASTOLFO</b> 2001-06-27 (M) LOI LO01174590 - bluebelton</p>  |
|  | <p><b>MARA DIGAL</b> (F) JR705037</p>   | <p><b>EROS DI LORO PICENO</b><br/>2006-09-15 (M) LOI LO0743490<br/>(Camp. Tr. (Ch GQ)) - liver</p>  | <p><b>VIKTORIA</b> 2006-06-19 (F) JR700994</p>  | <p><b>ASTOLFO</b> 2001-06-27 (M) LOI LO01174590 - bluebelton</p>  |
|  | <p><b>SETY DIGAL</b> (F) JR703526</p>   | <p><b>VIKTORIA</b> 2006-06-19 (F) JR700994</p>   | <p><b>VIKTORIA</b> 2006-06-19 (F) JR700994</p>  | <p><b>ASTOLFO</b> 2001-06-27 (M) LOI LO01174590 - bluebelton</p>  |
|  | <p><b>BOLIVJA OD KARAOTOKA</b> (F)<br/>HR16970</p>   | <p>inconnu</p>   | <p><b>ASTOLFO</b> 2001-06-27 (M) LOI LO01174590 - bluebelton</p>  |   |
|  |   | <p>inconnu</p>   | <p><b>ASTOLFO</b> 2001-06-27 (M) LOI LO01174590 - bluebelton</p>  |   |

Eleveur : Hakan Nur OK / Propriétaire : Özkan COSKUN (+90545733766, hakannurok@gmail.com)  
Dépôt ADN  
Estimation des points au pédigrée : 11

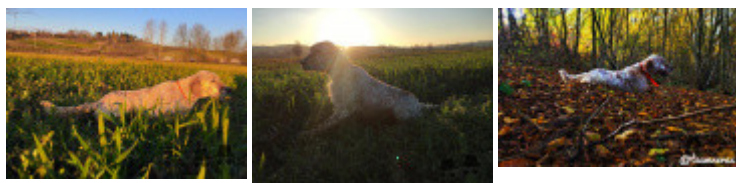
## Taux de consanguinité (estimation) : 1.2 %

RADENTIS SBRANCO (6,6 X 5,7) : 0.002441  
DECOR LOT (7,8,8,8,8,8 X 7,8,8,8,8,8,8,8) : 0.001740  
FRANCINI'S LUCA (6,8,8 X 6,7,7) : 0.001465  
ARNO (6,6,7 X 7,8,8) : 0.001221  
NERO (6 X 5) : 0.000977  
GUFO DI VAL DI CHIANA (5,7 X 6) : 0.000977  
RADENTIS GIAN (6,8,8,8,8 X 7,7,8) : 0.000977  
FARA (6,6,8 X 7) : 0.000549  
RADENTIS BORG (7,7 X 6,6,8) : 0.000488  
ROYAL MOZART (7,7 X 7,8,8) : 0.000366  
FRANCINI'S RAS (8,8 X 7,8) : 0.000183  
NEGUS (6,7,8 X 7) : 0.000122  
RUDY DEL DIANELLA (8 X 7,8) : 0.000092  
LEM DEL DIANELLA (7,8 X 8,8) : 0.000092  
RALF DEL DIANELLA (8 X 7) : 0.000061  
DUN DEL MESCHIO (8,8,8 X 8) : 0.000061  
FRANCINI'S ODETTE (7 X 8) : 0.000061  
FRANCINI'S ASTON (7 X 8) : 0.000061  
FRANCINI'S VANITY (8 X 8,8) : 0.000031  
OLAF DEL TRE PONTI (8 X 8) : 0.000031  
ROYAL VIENNA (8 X 8) : 0.000031  
MARK DELLA BASSANA (8 X 8) : 0.000031



## Résultats concours

| Lieu   | Date       | Type      | Epreuve | N° | Juge | Conducteur | Qualif. | Pts |
|--|------------|-----------|---------|----|------|------------|---------|-----|
| TR Spéciale  | 2010-09-20 | Printemps | couple  |    |      |            | 1 EXC   | 40  |
| <i>Total des points Challenge Setter-anglais.fr 2010</i>   |            |           |         |    |      |            |         | 40  |
| Total des points   |            |           |         |    |      |            |         | 40  |
| <i>Coefficients : solo x1, couple x2 / GT x1, GN x2, GS (bécasse, bécassine) x2, GS montagne x3, Printemps x2, Grande Quête x4</i> |            |           |         |    |      |            |         |     |



Note : les données ne sont pas garanties. Elles ont été entrées par les membres sans garantie d'exactitude.