








ARTU DEL FABIOMASSIMO

2016-01-03 (M) ROI16/44751
Couleur : Liver / Dyspl. : A
[fiche affixe](#)



hosted by setter-anglais.fr

<p>Père TRICO DEL FABIOMASSIMO 2005-04-19 (M) LOI LO0589258 - tricolore</p>	<p>AKIM DEL FABIOMASSIMO 2000-09-24 (M) LOI LO01143159 - bluebelton</p> 	<p>ULISSE DEL FABIOMASSIMO 1994-12-09 (M) LOI ST516763 (Ch. Ital. Lav.) - bluebelton</p> 	<p>FRED DEL FABIOMASSIMO 1991-09-23 (M) LOI ST447830 (Ch. Ital. Lav.) - bluebelton</p> 
	<p>RAISSA DEL FABIOMASSIMO 2002-07-02 (F) LOI LO02104134 - tricolore</p>	<p>LEONESSA DEL FABIOMASSIMO 1996-08-31 (F) LOI ST544533 - bluebelton</p>	<p>LINDO' DEL FABIOMASSIMO 1998-10-06 (M) LOI LO9931047 - bluebelton</p>
		<p>DORA DEL FABIOMASSIMO 2000-08-09 (F) LOI LO0111086 - lemon</p>	<p>ASTON DEL FABIOMASSIMO 1990-06-30 (M) LOI ST429149 (Ch. Ital. Lav., Ch. Int. Lav., Camp. Ripr.) - bluebelton</p> 
			<p>THALIA DEL FABIOMASSIMO 1994-10-25 (F) LOI ST509504 - bluebelton</p>
			<p>ZAR DEL FABIOMASSIMO 1993-08-17 (M) LOI ST484695 (Ch. Ital. Lav.) - lemon</p>
			<p>MONIA DEL FABIOMASSIMO 1996-09-01 (F) LOI ST544545 - tricolore</p>
			<p>ULISSE DEL FABIOMASSIMO 1994-12-09 (M) LOI ST516763 (Ch. Ital. Lav.) - bluebelton</p> 
			<p>DORA 2 DEL FABIOMASSIMO 1995-05-10 (F) LOI ST517765 - lemon</p>

<p>Mère NERA 2009-07-03 (F) LOI LO1090114 - bluebelton</p>	<p>AKIM DEL FABIOMASSIMO 2000-09-24 (M) LOI LO01143159 - bluebelton</p> 	<p>ULISSE DEL FABIOMASSIMO 1994-12-09 (M) LOI ST516763 (Ch. Ital. Lav.) - bluebelton</p> 	<p>FRED DEL FABIOMASSIMO 1991-09-23 (M) LOI ST447830 (Ch. Ital. Lav.) - bluebelton</p> 
	<p>LUSSI DEL FABIOMASSIMO 1998-10-06 (F) LOI LO9931046 - tricolore</p>	<p>LEONESSA DEL FABIOMASSIMO 1996-08-31 (F) LOI ST544533 - bluebelton</p>	<p>ZAR DEL FABIOMASSIMO 1993-08-17 (M) LOI ST484695 (Ch. Ital. Lav.) - lemon</p>
		<p>MONIA DEL FABIOMASSIMO 1996-09-01 (F) LOI ST544545 - tricolore</p>	<p>ASTON DEL FABIOMASSIMO 1990-06-30 (M) LOI ST429149 (Ch. Ital. Lav., Ch. Int. Lav., Camp. Ripr.) - bluebelton</p>
			<p>BRUT DEL FABIOMASSIMO 1991-01-17 (M) LOI ST432871 - bluebelton</p>
			<p>MARA DEL FABIOMASSIMO 1992-05-17 (F) LOI ST458986 - bluebelton</p>
			<p>EST DEL FABIOMASSIMO 1995-05-15 (M) LOI ST517773 - bluebelton</p>
			<p>DELTA DEL FABIOMASSIMO 1995-05-10 (F) LOI ST517767 - bluebelton</p>

Propriétaire : Fabio Giovannoni
Sang italien (estimation) : 100 %
Estimation des points au pédigrée : 6

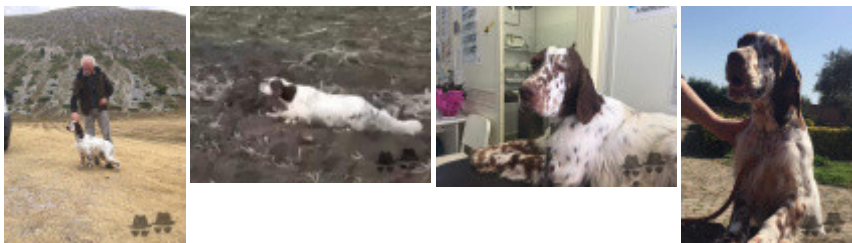
Taux de consanguinité (estimation) : 30.2 %

AKIM DEL FABIOMASSIMO (2 X 2) : 0.150085
FRED DEL FABIOMASSIMO (4,5,5,6,6 X 4,5,5) : 0.028015
ASTON DEL FABIOMASSIMO (4,5,5,6,6,7,7 X 4,5,5,6,6) : 0.021271
MONIA DEL FABIOMASSIMO (4 X 3) : 0.019794
ULISSE DEL FABIOMASSIMO (3,4 X 3) : 0.017487
ZAR DEL FABIOMASSIMO (4 X 3) : 0.016846
LEM DEL RESEGONE (6,7,7,7,7,8,8,8,8,8,8,8,8,8,8,8 X 6,6,7,7,7,7,7,8,8,8,8,8,8,8,8,8,8,8) : 0.011017
KELT DEL DIANELLA (6,6,7,7,7,7,7,7,8,8,8,8,8,8,8,8,8,8 X 6,6,7,7,7,7,7,7,7,8,8,8,8,8,8,8) : 0.010284
NERA DELL'ORSONE (6,7,7,7,8,8,8,8,8,8,8,8,8,8 X 6,6,7,7,7,7,8,8,8,8,8,8,8,8) : 0.006897
LINDO DEL DIANELLA (5,6,6,7,7,7,8,8 X 5,6,6,7,7,7) : 0.005577
RINA DELLA SERPENTARA (5,6,6,7,7,7,8,8 X 5,6,6,7,7) : 0.003872
KALI DEL DIANELLA (6,7,7,7,8,8,8,8,8,8 X 6,7,7,7,8,8,8,8) : 0.002380
ASTRA DEL FABIOMASSIMO (5,6 X 5) : 0.001953
BESSY DEL DIANELLA (7,7,8,8,8,8,8 X 7,7,7,8,8,8,8) : 0.001648
BOOM DEL GIANTANO (7,7,8,8,8,8 X 7,7,8,8,8,8) : 0.001038
LEM (6,6,7,7,8,8 X 6,6,7,8,8) : 0.000854
REDA DELLA SERPENTARA (6,6,7,7,8,8 X 6,6,7,8,8) : 0.000854
ROCK DEL DIANELLA (6,7 X 5,7) : 0.000732
MERI DEL DIANELLA (7,7,8,8,8,8,8 X 7,7,8,8,8,8,8,8) : 0.000305
ROMAN DEGLI ODDO (7,7,8,8,8,8,8 X 7,7,8,8,8,8,8,8) : 0.000305
ZUNA (7,8,8 X 6,7,8) : 0.000275
KAREN DEL DIANELLA (8,8,8 X 7,8,8,8,8,8) : 0.000244



Résultats concours

Lieu	Date	Type	Epreuve	N°	Juge	Conducteur	Qualif.	Pts
ES Marchena Ouvert	2022-02-07	Printemps	couple	7	Provost Rosa		TB	16
Total des points Challenge Setter-anglais.fr 2022								16
Total des points								16
Coefficients : solo x1, couple x2 / GT x1, GN x2, GS (bécasse, bécassine) x2, GS montagne x3, Printemps x2, Grande Quête x4								



Note : les données ne sont pas garanties. Elles ont été entrées par les membres sans garantie d'exactitude.