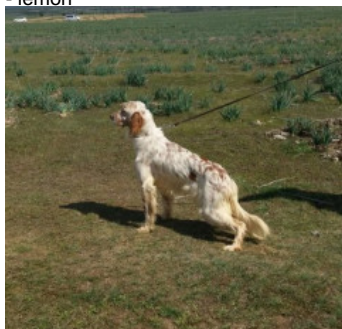


DIANA DE L'EL BALDIO

(F) LOE
Couleur : Blanco y naranja (lemon)
[fiche affixe](#)



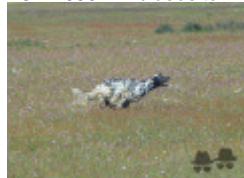
Père
CAPOTE DE L'EL BALDIO
(M)
LOE
- lemon



ELFO DE L'EL BALDIO 2012-05-26
(M) LOP 553549 (TrGQ (E.17) ; TrPC ; TrPr ; ChGQ) - lemon



CAMINANTA DE L'EL BALDIO (F)
LOE 188624 - bluebelton



CANTARES DE L'EL BALDIO (M)
LOE 1886421 (CH(E)GQ, TrGB(E.11),
CHIT) - lemon



ADRA DE L'EL BALDIO (F) LOE
1771015 (TrGQ)



VENTISCA DE L'EL BALDIO
2004-04-30 (F) LOE 1448995 - lemon



PAIPER
2005-01-10 (M)
LOI LO0580213
(Ch. Ital. Lav., CH GQ,
Ch. Int. Lav.) -

bluebelton

**VENTISCA DE L'EL
BALDIO** 2004-04-30
(F) LOE 1448995 -
lemon



**VOLCAN DE L'EL
BALDIO** (M) LOE
1449000 (TrGB(E.08))



ROSY (F) LOE 1245110

ORIO 2002-05-14
(M) LOI
LO02116390
(Camp. Tr. (Ch GQ)) -
bluebelton






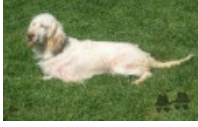


KUTINA 2002-04-08 (F) LOI
LO02103234 (Camp. Ripr.) - tricolore



RAIDENTIS D'ESPANA
1995-05-22 (M) LOE
990823 (Ch IT B, Ch GQ)
- lemon



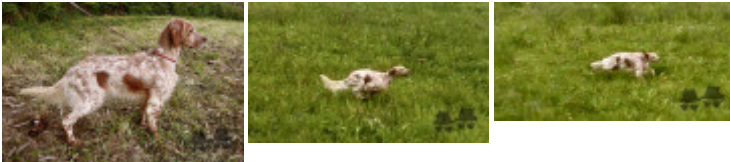
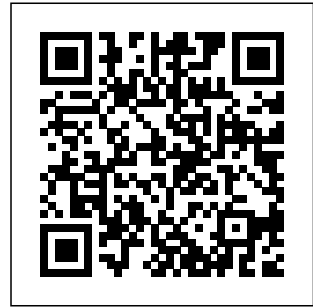
ROSY (F) LOE 1245110

<p>Mère</p> <p><u>ESTRELLA DE L'EL BALDIO</u> 2012-11-20 (F) LOE 2104768 - lemon</p>	<p><u>CANTARES DE L'EL BALDIO</u> (M) LOE 1886421 (CH(E)GQ, TrGB(E.11), CHIT) - lemon</p> 	<p><u>PAIPER</u> 2005-01-10 (M) LOI LO0580213 (Ch. Ital. Lav., CH GQ, Ch. Int. Lav.) - bluebelton</p> 	<p><u>ORIO</u> 2002-05-14 (M) LOI LO02116390 (Camp. Tr. (Ch GQ)) - bluebelton</p> 	
		<p><u>VENTISCA DE L'EL BALDIO</u> 2004-04-30 (F) LOE 1448995 - lemon</p> 	<p><u>KUTINA</u> 2002-04-08 (F) LOI LO02103234 (Camp. Ripr.) - tricolore</p>	<p><u>RADENTIS D'ESPANA</u> 1995-05-22 (M) LOE 990823 (Ch IT B, Ch GQ) - lemon</p> 
	<p><u>ADRA DE L'EL BALDIO</u> (F) LOE 1771015 (TrGQ)</p>		<p><u>VOLCAN DE L'EL BALDIO</u> (M) LOE 1449000 (TrGB(E.08))</p> 	<p><u>RADENTIS D'ESPANA</u> 1995-05-22 (M) LOE 990823 (Ch IT B, Ch GQ) - lemon</p> 
			<p><u>ROSY</u> (F) LOE 1245110</p>	<p><u>ROSY</u> (F) LOE 1245110</p>
		<p><u>ROSY</u> (F) LOE 1245110</p>	<p><u>ADRIAS TIMOTY</u> 1994-02-25 (M) LOI ST496529 - tricolore</p>	
			<p><u>MOA</u> 1994-05-02 (F) LOI ST503682 (Ch. Ital. Lav.) - lemon</p>	

Sang italien (estimation) : 100 %
Estimation des points au pédigrée : 28

Taux de consanguinité (estimation) : 28 %

ADRA DE L'EL BALDIO (3 X 2) : 0.079590
CANTARES DE L'EL BALDIO (3 X 2) : 0.062500
ROSY (4,4,5,5 X 3,4,4) : 0.048340
VENTISCA DE L'EL BALDIO (3,4 X 3) : 0.032959
PAIPER (3,4 X 3) : 0.031738
RADENTIS D'ESPANA (4,5,5 X 4,4) : 0.018066
RADENTIS GIAN (6,6,7,7,7,7,8,8,8,8 X 5,6,6,7,7,7,7) : 0.003906
DECOR LOT (7,7,7,7,8,8,8,8,8,8,8 X 6,6,7,7,7,7,8,8,8,8,8,8,8) : 0.002197
DUN DEL MESCHIO (8,8,8,8,8 X 7,7,8,8,8,8,8,8,8) : 0.000458



Note : les données ne sont pas garanties. Elles ont été entrées par les membres sans garantie d'exactitude.