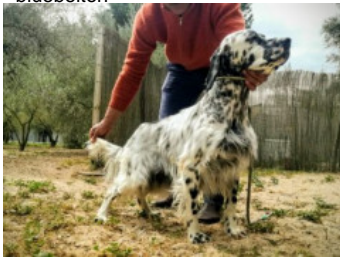


FURIA DE VILLACARMAGO

2019-07-08 (F) LOE 2489087
 Couleur : Blanco y negro (bluebelton)
[fiche affixe](#)



Père
NEYMAR DEL FAENOR NI
 (M)
 LOE 2385084
 - bluebelton



MARC DEL FAENOR NI 2012-10-01
 (M) LOE 2141505 (CH IT GQ) -
 bluebelton



ALPINENSIS EMILY 2015-06-16 (F)
 LOI LO15118731 - bluebelton



MARK 2011-06-14 (M) LOI
 LO11112072 (Tr GQ) - bluebelton

SIMBA DEL FAENOR NI dite TACA
 2008-10-29 (F) LOE 1865076 (Tr
 becasas) - MARRÓN/BLANCO



NATAN 2012-10-03 (M) LOI
 LO12157969 (CH IT GQ, Camp. TR. (CH
 GQ), CH(I)T) - bluebelton



NORMA 2013-01-02 (F) LOI
 LO1333559 - bluebelton



ROONEY DEL SARGIADAE
 2004-06-11 (M) LOI
 LO04120540 (Ch GQ,
 Camp. Ital. Assol., Camp.
 Ital. Lav., Camp. Int. Lav.) - bluebelton

HELI 2008-09-15 (F) LOI LO0991918
 - tricolore

ZIP DEL FORTE DEGENFELD
 2005-02-16 (M) LOI LO0555816 -
 lemon

JELY DE LA ARMUÑA (F) LOE
 1508452

KAPO 2003-11-10
 (M) LOI LO0439835
 (Ch IT GQ) - bluebelton



QUATTA
 2009-06-11 (F)
 LOI LO1085288 -
 tricolore










VALENTINO
 2005-04-25 (M) LOI
 LO05103558 -
 bluebelton



MIRA DEL CENTRO MARCHE
 2011-06-19 (F) LOI
 11114550 -
 bluebelton

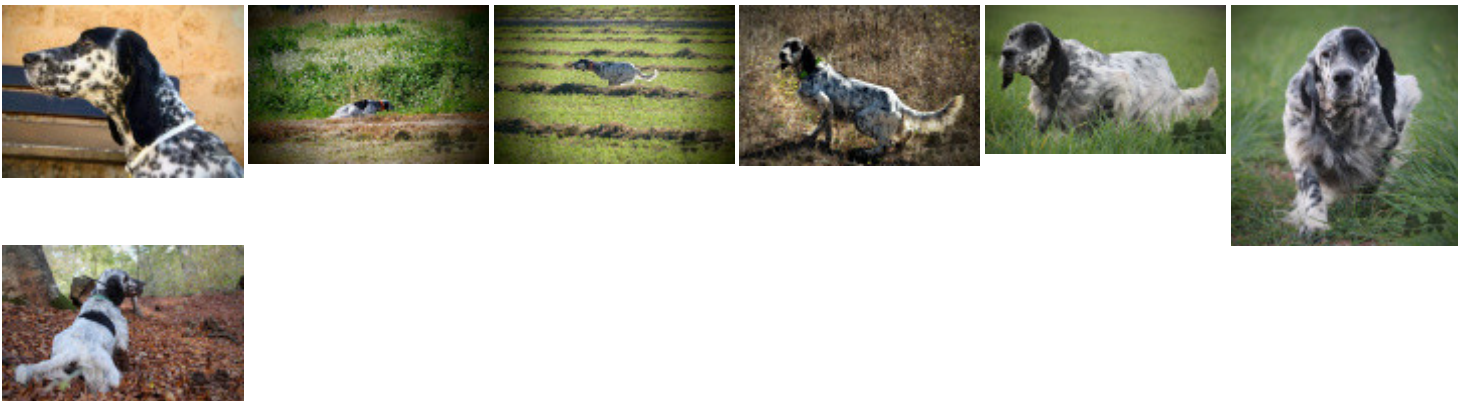


<p>Mère BARI DEL FAENOR NI 2015-08-01 (F) LOE 2295012 - tricolore</p> 	<p>MARC DEL FAENOR NI 2012-10-01 (M) LOE 2141505 (CH IT GQ) - bluebelton</p> 	<p>MARK 2011-06-14 (M) LOI LO11112072 (Tr GQ) - bluebelton</p>	<p>ROONEY DEL SARGIADAE 2004-06-11 (M) LOI LO04120540 (Ch GQ, Camp. Ital. Assol., Camp. Ital. Lav., Camp. Int. Lav.) - bluebelton</p>
	<p>ETA 2008-03-10 (F) LOI LO095838 - tricolore</p> 	<p>SIMBA DEL FAENOR NI dite TACA 2008-10-29 (F) LOE 1865076 (Tr becadas) - MARRÓN/BLANCO</p> 	<p>HELI 2008-09-15 (F) LOI LO0991918 - tricolore</p>
		<p>BIG JIM 2000-12-01 (M) LOI LO0188207 (CH GQ, Ch. Int. Lav., Camp. Ripr., Ch. Ital. Lav.) - liver</p> 	<p>LERRY 1997-02-14 (M) LOI ST555862 (Ch GQ, Ch IT) - bluebelton</p>
		<p>ASTRA DI GRUMA 2003-02-10 (F) LOI LO0352950 (Ch. Ital. Lav.) - bluebelton</p>	<p>RADENTIS TANGA 1998-09-15 (F) LOI LO9958147 - lemon</p> 
			<p>RAS DI GRUMA 2001-08-05 (M) LOI LO01160073 (Ch. Ital. Lav.) - bluebelton</p> 
			<p>GILDA DI GRUMA 1989-11-01 (F) LOI ST410396 - bluebelton</p>

Eleveur : Ricardo Cornago / Propriétaire : Setter de VillaCarmago (630355031, richycch@gmail.com)
Sang italien (estimation) : 100 %
Estimation des points au pédigrée : 26

Taux de consanguinité (estimation) : 14.3 %

MARC DEL FAENOR NI (2 X 2) : 0.127258
BIG JIM (5 X 3,5) : 0.008301
ARNQ (6,7,7,8 X 5,5,6,6,7,7,8) : 0.004395
RADENTIS GIAN (8,8,8,8,8 X 7,8,8,8,8) : 0.000610
PALAZIENSIS PEPE (6,7,7 X 6) : 0.000488
RADENTIS SBRANCO (7,7 X 5,7,7) : 0.000488
DECOR LOT (8,8 X 8,8,8,8,8) : 0.000275
ROYAL VIENNA (8,8,8 X 6,8,8,8) : 0.000244
FRANCINI'S LUCA (6,7 X 6) : 0.000244
DAISY DI GRUMA (8 X 5) : 0.000244
RADENTIS BORG (8,8,8 X 6,8,8,8) : 0.000122
RALF DEL DIANELLA (7 X 8) : 0.000061
OLAF DEL TRE PONTI (8 X 7) : 0.000061
PICASSO DEL BINARIO (8,8 X 8) : 0.000031
DUN DEL MESCHIO (8 X 8,8) : 0.000031
HALQA DELLA VECCHIA IRLANDA (8 X 7,7,8,8,8) : 0.000031



Note : les données ne sont pas garanties. Elles ont été entrées par les membres sans garantie d'exactitude.