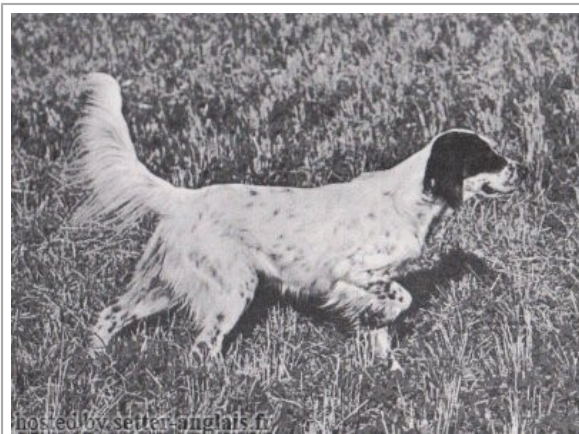



**WAYGOOD FIONA**

1955-02-21 (F) KCSB491AP  
Couleur : Noi.Mar.Fau.PBI.Env (tricolore) / Titres : FTCh  
[fiche affixe](#)

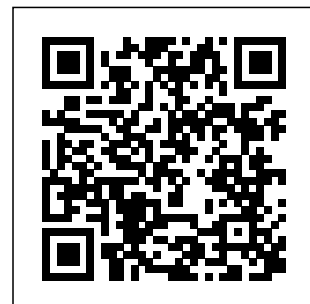


Père <b>SHARBERRY WHITESTONE</b> 1950-01-03 (M) KCSB544A (FTCh) - bluebelton 	<b>YANKEE BONDHU</b> 1942-03-23 (M) KCSB1592AF (Ch T) - bluebelton	<b>NYDIUS</b> 1934 (M) LOI	<b>PICKWICK</b> (M) <b>HORSFORD COUNTESS DIME</b> 1932 (F)
	<b>STRIFF BONDHU</b> (F)	<b>HORSFORD KITTY WIND'EM</b> 1933-08-10 (F) AKCA11441 - tricolore	<b>HIGHTONE TONY</b> 1925-11-06 (M) FDSB134108@ (Am. Ch.) - bluebelton <b>PALIACHO'S JESSIE B</b> 1925-08-03 (F) FDSB.139885 - bluebelton
Mère <b>DOWNSMAN'S REVEL</b> 1950-01-22 (F) KCSB677AJ - liver	<b>ADARE NIMA</b> 1945-03-28 (M) KCSB190AE (Champion) - liver 	<b>HOT BONDHU</b> (M)	<b>ROYAL PRINCE</b> (M) <b>LETTIE BONDHU</b> (F)
	<b>ADARE SMUTS</b> (F) KCRC27369/45	<b>SILK BONDHU</b> (F) - orange white	<b>SPECK BONDHU</b> (M) <b>HORSFORD DASHING DALEY</b> (F)
	<b>RECOIL BONDHU</b> 1948-04-21 (F) KCSB442AH - liver	<b>BADE BONDHU</b> 1942-09-01 (M) KCRC.2021/43	 <b>DAN BONDHU</b> 1935-04-17 (M) KCSB1377SS - bluebelton <b>HECKLE BONDHU</b> 1933-02-02 (F)
	<b>BADGE BONDHU</b> 1942 (F) LOI	<b>YANKEE BONDHU</b> 1942-03-23 (M) KCSB1592AF (Ch T) - bluebelton <b>DASHING DON OF KILCULLIHEEN</b> (M) <b>COUNTESS WIND'EM OF KILCULLIHEEN</b> 1939 (F)	<b>NYDIUS</b> 1934 (M) LOI <b>HORSFORD KITTY WIND'EM</b> 1933-08-10 (F) AKCA11441 - tricolore
			 <b>DAN BONDHU</b> 1935-04-17 (M) KCSB1377SS - bluebelton <b>HECKLE BONDHU</b> 1933-02-02 (F)

Sang italien (estimation) : 9 %  
Estimation des points au pédigrée : 34

**Taux de consanguinité (estimation) : 7.4 %**

**YANKEE BONDHU** (2 X 3) : 0.062500  
**HORSFORD KITTY WIND'EM** (3 X 4,5) : 0.007858  
**HORSFORD DASHING VISCOUNT** (5 X 6) : 0.001099  
**HORSFORD DASHING DUCHESS** (5 X 6) : 0.001068  
**LEMONORA** (6 X 7,7,7) : 0.000488  
**TRAVELLER** (6 X 7,7,7) : 0.000488  
**TRUSTY (HARTLEY'S)** (7,8 X 7,7,8,8,8) : 0.000427  
**PRINCE BONDHU** (7,7,8 X 8,8) : 0.000153  
**NYDIA** (8 X 8,8,8,8) : 0.000061  
**GILL** (8 X 8) : 0.000031  
**DRAKE WIND'EM A.K.A. WILLOW BROOK DRAKE WIND'EM** (8 X 8) : 0.000031





Note : les données ne sont pas garanties. Elles ont été entrées par les membres sans garantie d'exactitude.

