

GISTREDO REIS dit ENZO

2019-10-25 (M) LOE 2453196
Couleur : Tricolor (tricolore)
[fiche affixe](#)



Père
GISTREDO SIOUX
2018-02-24 (M)
LOE 2411457
- Liver



BEST OD POSTARA 2014-01-10 (M)
FCA/2907 (Tr Gb) - Liver



DENDABERRI LAURA II 2010-09-17
(F) LOE 2411456 (Tr Bc, Tr Pr, PAN) -
bluebelton



ROONEY DEL SARGIADAE
2004-06-11 (M) LOI LO04120540 (Ch
GQ, Camp. Ital. Assol., Camp. Ital. Lav., Camp.
Int. Lav.) - bluebelton



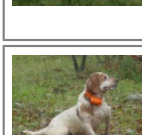
DESIANENSIS PATTY 2010-05-30
(F) JR704856ES

RADENTIS COBRA 2000-06-30 (M)
LOI LO0128791 (Camp. Tr. (Ch GQ)) -
lemon

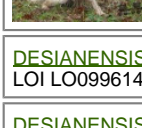


ORIOLENSIS KINA 2008-11-05 (F)
LOE 1944608 - lemon

BIG JIM 2000-12-01
(M) LOI LO0188207
(Ch GQ, Ch. Int. Lav.,
Camp. Ripr., Ch. Ital. Lav.)
- liver



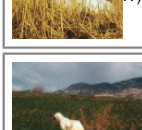
CASSIA 2002-03-19
(F) LOI LO02125347 -
lemon



DESIANENSIS ISAC 2008-09-04 (M)
LOI LO0996144 - bluebelton

DESIANENSIS SONIA 2003-04-15 (F)
LOI LO03104160 (Ch.it Lav) - liver

LERRY 1997-02-14 (M)
LOI ST555862 (Ch GQ, Ch
IT) - bluebelton

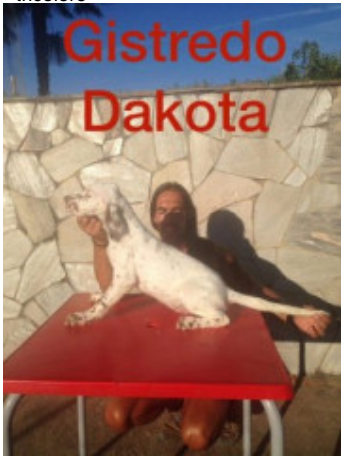


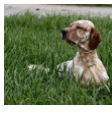


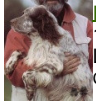






RADENTIS BELLA
1997-01-13 (F) LOI
ST559827 (IT Ch GQ) -
lemon



**ROONEY DEL
SARGIADAE**
2004-06-11 (M) LOI
LO04120540 (Ch GQ,
Camp. Ital. Assol., Camp.
Ital. Lav., Camp. Int. Lav.) - bluebelton

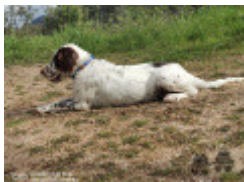
DORA 2002-05-14 (F) LOI
LO02116400 - tricolore

<p>Mère <u>GISTREDO DACOTA I</u> 2017-06-01 (F) LOE 2383764 - tricolore</p> 	<p><u>NOLO DEL ZAGNIS</u> 2012-07-05 (M) LOI LO12129055 (CH GQ, CH IT, Camp. Ital. Lav. (CH T), Camp. Ripr., CH(I)B) - bluebelton</p> 	<p><u>GIAR D'ALERIA</u> 2008-11-15 (M) LOI LO09120198 (Camp. Soc., Ch. Ita. Lav.) - lemon</p> 	<p><u>LORD DEL ZAGNIS</u> 2002-09-30 (M) LOI LO02167262 (Ch. Ital. Lav., CH GQ, Ch. Int. Lav.) - lemon</p> 
	<p><u>GISTREDO JOMA</u> 2015-08-26 (F) LOE 2281224 - bluebelton</p> 	<p><u>ALICE DEL ZAGNIS</u> 2009-10-27 (F) LOI LO1054031 - lemon</p>	<p><u>FATA DI BOSCOBANCO</u> 2005-08-04 (F) LOI LO0628070 (Ch. Ital. Lav.) - bluebelton</p>
		<p><u>GISTREDO YACK</u> 2010-03-15 (M) LOE 1981680 - tricolore</p> 	<p><u>RADENTIS NOMAR</u> 1998-03-22 (M) LOI LO98133353 ((CHGQ CHITF / CHIT.B)) - liver</p> 
		<p><u>TIZA</u> 2008-09-27 (F) LOE 1854001 - lemon</p> 	<p><u>GISTREDO FURIA</u> 2007-06-30 (F) LOE 1732329 - liver</p> 
			<p><u>GISTREDO FUEGO</u> 2007-06-30 (M) LOE 1732328 - liver</p> 
			<p><u>BERATI DE BAYARA</u> 2006-10-23 (F) LOE 1631142 - lemon</p> 

Propriétaire : José Vilela navas (662240059, jose_vilelanavas@hotmail.com)
Sang italien (estimation) : 95 %
Estimation des points au pédigrée : 18

Taux de consanguinité (estimation) : 2.2 %

RADENTIS SBRANCO (5,6,7,7,7,7 X 5,7,7,8,8,8,8) : 0.009857
RADENTIS NOMAR (6 X 4) : 0.002197
RADENTIS GIAN (7,7,7,7,8,8,8 X 7,7,7) : 0.001648
ODE DEL SOLE (5 X 7,7,8,8) : 0.001465
ARNO (5,6,6,7,7,7,8 X 7) : 0.001404
RADENTIS BORG (6,7,8,8,8,8,8 X 6,6,8,8) : 0.001160
DECOR LOT (8,8,8,8,8,8,8 X 8,8,8,8,8,8,8) : 0.000885
CRISMANI ATOS (6,7,7,8,8,8 X 8,8,8) : 0.000671
PALAZIENSIS PEPE (6 X 6) : 0.000488
FLAY DEL DIANELLA (7,8 X 7,8,8,8) : 0.000458
EMO DELLA TRAPPOLA (7,8 X 7,8,8,8) : 0.000458
AMBO DEL VARO (6,8 X 8,8,8,8) : 0.000366
OLAE (7 X 6) : 0.000244
NEGUS (7 X 7,8) : 0.000183
FRANCINI'S LUCA (8 X 7) : 0.000061
URSULA DEL PRATESI (8 X 8,8) : 0.000061
ALMER (8 X 8) : 0.000031
AMBRA DEL DIANELLA (8,8 X 8) : 0.000031
LEM DEL RESEGONE (8 X 8) : 0.000031
DUN DEL MESCHIO (8 X 8) : 0.000031



Note : les données ne sont pas garanties. Elles ont été entrées par les membres sans garantie d'exactitude.

