

ZEYNA

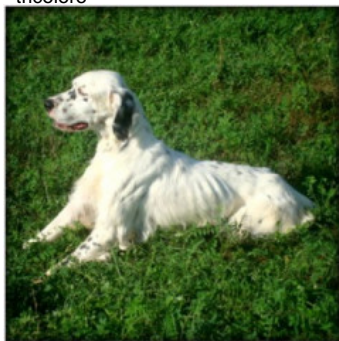
2004-05-10 (F)

Couleur : Noi.Mar.Fau.PBl.Env (tricolore)



hosted by setter-anglais.fr

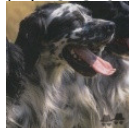
Père
NOE' DEL MANGIA
 2006-06-01 (M)
 LOI LO06105119
 - tricolore



NERO 1997-03-29 (M) LOI
 LO9817889 (Ch T, Ch GQ) - bluebelton



GUFO DI VAL DI CHIANA 1994-04-01
 (M) LOI ST514177 (Ch GQ) - bluebelton



KELLI 1992-06-18 (F) LOI ST466220 -
 bluebelton



NEGUS DEL MANGIA 1999-01-20
 (M) LOI LO9991100 (CH IB) -
 bluebelton



TITTA DEL MANGIA 1990-01-01 (F)
 LOI ST418384 (CH IB) - bluebelton

NEGUS
 1988-09-05 (M)
 LOI ST382982
 (Camp. Tr. (Ch GQ),
 Camp. Int. Lav (Ch I T))



- bluebelton

BRUNA 1985-01-01 (F) LOI
 ST299858 (Ch L Ch Int) - bluebelton

BRIO 1988-01-01 (M) LOI
 ST372361 (Ch IT T) - lemon







BRUK 1990-09-16 (F) LOI ST450031 -
 tricolore

DEM DEL MANGIA 1996-04-23 (M)
 LOI ST542148 - bluebelton

RAISSA DEL MANGIA 1995-08-20 (F)
 LOI ST525023 - tricolore

RIBOT DEL MANGIA 1986-09-01 (M)
 LOI ST340477 (Camp. Ripr.) - bluebelton

LILLY DEL MANGIA 1982-10-20 (F)
 LOI ST253415 (Camp. Ripr.) - lemon

<p>Mère</p> <p><u>ISABO' DEL MANGIA</u> 2003-04-24 (F) LOI LO0384249 (CH(I)B) - tricolore</p>	<p><u>ELIA DEL MANGIA</u> 1994-02-01 (M) LOI ST496195 (CH IB) - tricolore</p>	<p><u>RIBOT DEL MANGIA</u> 1986-09-01 (M) LOI ST340477 (Camp. Ripr.) - bluebelton</p>	 <p><u>DEM</u> 1980-08-30 (M) LOI ST222808 (CH INT L RIP) - BIANCO-MACCHIA NERA OCCHIO DX-PI</p>	
		<p><u>PAMELA DEL MANGIA</u> 1987-07-27 (F) LOI ST358460 - lemon</p>	 <p><u>RADENTIS GIAN</u> 1983-01-02 (M) LOI ST258470 (Ch. Ital. Lav., Ch. Int. Lav., Camp. Ripr.) - lemon</p>	
	<p><u>RAISSA DEL MANGIA</u> 1995-08-20 (F) LOI ST525023 - tricolore</p>		<p><u>ARIANNA DEL MANGIA</u> 1980-09-14 (F) LOI ST224542 - lemon</p>	 <p><u>GAETANO DEL BINARIO</u> 1987-06-09 (M) LOI ST356411 (Camp. Int. Lav (Ch IT), Camp. Ital. Lav., Camp. Trialler (Ch GQ)) - bluebelton</p>
		<p><u>AMBRA DEL MANGIA</u> 1987-04-10 (F) LOI ST354167 - lemon</p>		 <p><u>RADENTIS GIAN</u> 1983-01-02 (M) LOI ST258470 (Ch. Ital. Lav., Ch. Int. Lav., Camp. Ripr.) - lemon</p>
			<p><u>SUSY</u> 1990-10-03 (F) LOI ST430257 - tricolore</p>	
			<p><u>LAIKA DEL MANGIA</u> 1982-10-20 (F) LOI ST253414 - lemon</p>	

Sang italien (estimation) : 100 %
Estimation des points au pédigrée : 27

Taux de consanguinité (estimation) : 8.3 %

RAISSA DEL MANGIA (4 X 2) : 0.031494
RIBOT DEL MANGIA (4,6 X 3) : 0.019531
DUN DEL MESCHIO (6,7,7,8,8,8,8 X 5,6,6,6,7,7,7,8) : 0.007416
RADENTIS GIAN (6,7 X 4,4) : 0.003906
DECOR LOI (5,7,8 X 5,5) : 0.003906
DEM (5,7,7 X 4,5) : 0.003418
ARIANNA DEL MANGIA (6,8 X 4,5) : 0.002441
SUSSI DELLA MARCIOLA (6,7,8 X 5,6,6) : 0.002075
KHIM DE LA FORZA (6,7,8 X 5,6,6) : 0.002075
CLODO DELLA BASSANA (5,7,8 X 5) : 0.002075
SARA (5,7,8 X 5) : 0.001953
LAIKA DEL MANGIA (6,7 X 4) : 0.000977
LOPEZ DELLA BASSANA (6,7,8 X 6,6) : 0.000854
TRUEBA DELLA FAGIANA (8,8,8 X 7,7,8,8,8,8,8,8) : 0.000610
LINDO 3 DI CEREÀ (7,7,8 X 7,8,8) : 0.000305
MINA DEL VOLO (7,7 X 7) : 0.000122
VIMON REVEL (8,8 X 8,8) : 0.000061
CRISMANI DIK (8,8 X 8,8) : 0.000061



Note : les données ne sont pas garanties. Elles ont été entrées par les membres sans garantie d'exactitude.

