

**RICK DU MONT D'ERGNY**

2020-07-15 (M) LOF 269287  
Couleur : Noï. PBl.Env.Mou. (bluebelton)  
[fiche affixe](#)



hosted by setter-anglais.fr

**CYCLONE DU BARALAN** 2007-08-03  
(M) LOF 196686/032337 (TR, CH P, CH  
IT) - bluebelton



Père  
**H DE FEUNTEUN BLEIS**  
2012-08-09 (M)  
LOF 224372/39370  
(CHGQ, CHIT, CHRACE GQ, VOF/GQ)  
- bluebelton



**BOHEME DE L'OREE DU BOIS  
BECASSES** 2006-06-28 (F) LOF  
188159/36230 (TR, CH P, CH T) -  
bluebelton



**BIG JIM** 2000-12-01 (M) LOI  
LO0188207 (CH GQ, Ch. Int. Lav., Camp.  
Ripr., Ch. Ital. Lav.) - liver



**SORIA DE HAIR** 2001-06-05 (F) LOF  
160910/29880 (TR) - tricolore



**TIM DE ROCHE VILAINE** 2002-02-06  
(M) LOF 163324/27344 (CH P, TR GQ) -  
bluebelton



**UNE BELLE DE L'OREE DU BOIS  
BECASSES** 2003-07-01 (F) LOF  
171912/33599 (TR, CH P, CH T) -  
bluebelton



**LERRY** 1997-02-14 (M)  
LOI ST555862 (Ch GQ, Ch  
IT) - bluebelton



**RADENTIS TANGA**  
1998-09-15 (F) LOI  
LO9958147 - lemon



**ATOS** 1996-09-01  
(M) LOF  
141554/21331 (CHP  
CHA CH.T. TR) -  
bluebelton

**LINA DE HAIR** 1995-06-20 (F) LOF  
129091/27117 - tricolore






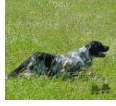





**IAGO DE  
LAURENCIA**  
1993-05-17 (M) LOF  
118125/17541 (CH P,  
TR GQ) - tricolore

**OLGA DE ROCHE VILAINE**  
1998-08-21 (F) LOF 144933/27873 -  
bluebelton

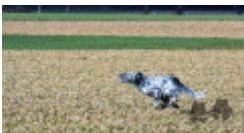


**RAMSES II DE LA  
TOUR MADELOC**  
2000-04-10 (M) LOF  
154001/24777 (TR) -  
tricolore

**LINDA DE L'OREE DU BOIS  
BECASSES** 1995-09-01 (F) LOF  
129924/25631 (TR, CH T) - bluebelton

<p>Mère <u>HOVA DU VAL DU RUTH</u> 2012-06-14 (F) LOF 224369/49701 - lemon</p> 	<p><u>CHAM DU VAL DU RUTH</u> 2007-01-09 (M) LOF 189877/31382 (CHGQ -CHITF -ChFV -VOF/FTP -TRGQ) - lemon</p> 	<p><u>KAPO'</u> 2003-11-10 (M) LOI LO0439835 (Ch IT GQ) - bluebelton</p> 	<p><u>NERO</u> 1997-03-29 (M) LOI LO9817889 (Ch T, Ch GQ) - bluebelton</p> 
	<p><u>USKA DU MAS D'EYRAUD</u> 2003-09-23 (F) LOF 173156/33007 - lemon</p> 	<p><u>ROSENN DU MAS D'EYRAUD</u> 2000-05-29 (F) LOF 154091/28767 (Ch GQ) - lemon</p> 	<p><u>KYBA</u> 1998-01-01 (F) LOI LO98118951 - lemon</p>
	<p><u>PIVIDORI'S GIOTTO</u> 1997-06-12 (M) LOI LO0114200 (Camp. Tr. (Ch GQ), CH IT) - bluebelton</p> 	<p><u>MALINE</u> 1996-05-17 (F) LOF 133269/24239 - lemon</p>	<p><u>ASTON DEL ZAGNIS</u> 1998-05-10 (M) LOI LO9938501 - bluebelton</p> 
	<p><u>NANDY DU MAS D'EYRAUD</u> 1997-04-12 (F) LOF 136974/28403 (VOF/FTP, VOF/FTA) - lemon</p>	<p><u>PIVIDORI'S CAMILLA</u> 1996-11-01 (F) LOI ST553391 - tricolore</p>	<p><u>FRANCINI'S TANGO</u> 1992-09-03 (M) LOF 121652/17341 (CHP CHGQ CHITF TR) - bluebelton</p> 
		<p><u>JANYS DU MAS D'EYRAUD</u> 1994-05-16 (F) LOF 122675/22642 - bluebelton</p>	

Puce : 250268723102840  
Sang italien (estimation) : 70 %  
Estimation des points au pédigrée : 43



Note : les données ne sont pas garanties. Elles ont été entrées par les membres sans garantie d'exactitude.

