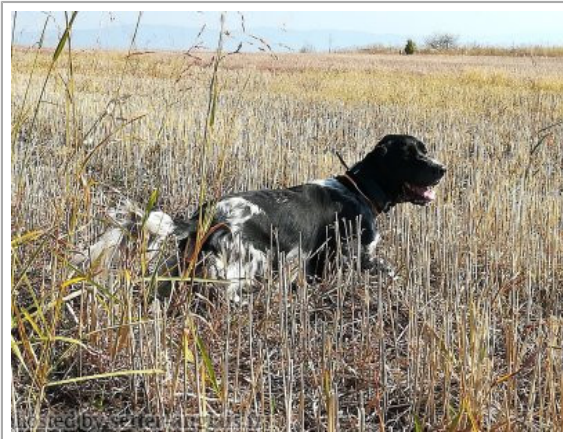


CARMEN

2016-04-14 (F) LOI LO1682732
Couleur : nero e bianco (bluebelton)



Père
ERODE DELLA BASSA REGGIANA
2011-07-07 (M)
LOI LO11130961
(CH P, Camp. Ripr.)
- tricolore



PEPE 2005-09-10 (M) LOI
LO0623486 (Ch. Ital. Lav., Ch. Int. Lav.,
Camp. Ripr.) - bluebelton



ISA DELLA BASSA REGGIANA
2005-04-07 (M) LOI LO05100702 -
tricolore

ROVAL NEDWED 2003-01-05 (M)
LOI LO0366753 - lemon



NIKA 1999-08-18 (F) LOI LO0017114
(Camp. Ripr.) - bluebelton

FRENK DEL DIANELLA 1997-09-27
(M) LOI LO9851974 (Ch L, Camp. Tr. (Ch
GQ)) - tricolore



SIRENA DELLA BASSA REGGIANA
1999-06-10 (F) LOI 99171897 (Ch Ital.
Lav.) - bluebelton



FRENK DEL DIANELLA 1997-09-27
(M) LOI LO9851974 (Ch
L, Camp. Tr. (Ch GQ)) -
tricolore

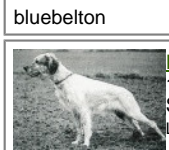
ROVAL LIU 1994-05-25 (F)
LOI ST503654 - bluebelton



CROL 1996-01-10 (M) LOI ST535938
- bluebelton

DJANA 1996-09-27 (F) LOI ST549910
- lemon






GIAN DEL DIANELLA
1996-02-28 (M) LOI
ST541319 (CH GQ,
Camp. Ripr.) -
bluebelton



ILA DEL DIANELLA
1992-07-01 (F) LOI
ST463596 (Ch. Ital.
Lav.) - lemon

CIRO 1995-01-22 (M) LOI ST514532
(Ch Italie T, IT T, Reproducte) - tricolore

ORA DELLA BASSA REGGIANA
1996-07-04 (F) LOI ST548956 (Camp.
Ripr.) - bluebelton

<p>Mère</p> <p>LUNA 2007-09-01 (F) LOI LO0879074 (Campione Riproduttore) - bluebelton</p> 	<p>DODGE DEL TIRSO 1998-02-14 (M) LOI LO9942918 (Ch IT IT-T, CHIB, Camp. Tr. (Ch GQ)) - bluebelton</p> 	<p>DERRYK 1991-05-10 (M) LOI ST443351 (Ch GQ) - bluebelton</p> 	<p>ROVAL MOZART 1987-03-04 (M) LOI ST350880 (Ch GQ, Ch. Int. Lav., Ch. Ital. Lav., Camp. Ripr.) - bluebelton</p>
	<p>FALLINI'S CORA 2003-10-06 (F) LOI LO0420804 - bluebelton</p>	<p>ASTRA DEL TIRSO 1992-10-01 (F) LOI ST454300 - lemon</p>	<p>AMBO DEL VARO 1987-10-04 (M) LOI ST360725 (Ch. Int. Lav.) - lemon</p> 
	<p>PIVIDORI'S GIOTTO 1997-06-12 (M) LOI LO0114200 (Camp. Tr. (Ch GQ), CH IT) - bluebelton</p> 	<p>ASTON DEL ZAGNIS 1998-05-10 (M) LOI LO9938501 - bluebelton</p>	<p>URSULA DEL PRATESI 1986-03-16 (F) LOI ST331214 - lemon</p>
	<p>DESSY 2002-01-07 (F) LOI LO0251623 - bluebelton</p>	<p>PIVIDORI'S CAMILLA 1996-11-01 (F) LOI ST553391 - tricolore</p>	<p>ROVAL RONNY 1992-11-14 (M) LOI ST473580 (Ch Italie L) - lemon</p>
		<p>PIANIGIANI'S RAINBOW 1999-10-15 (F) LOI LO0047166 (Camp. Ripr.) - tricolore</p>	

Eleveur : Ragazzini Vincenzo / Propriétaire : Ragazzini Vincenzo

Puce : 380260080337195

Estimation des points au pédigrée : 39

Taux de consanguinité (estimation) : 2.9 %

DECOR LOT (6,6,7,7,7,7,8 X 5,5,6,6,7,7,8,8) : 0.013611
ROVAL MOZART (5 X 4,5) : 0.006042
DUN DEL MESCHIO (7,8,8,8,8,8,8,8,8 X 7,7,7,7,7,8,8,8,8,8) : 0.004456
RADENTIS GIAN (6,6 X 5) : 0.001953
ROVAL FLY (6,6 X 5,6) : 0.001465
ASOR (6,7,8 X 6) : 0.000854
EMO DELLA TRAPPOLA (7,8 X 7,7) : 0.000183
ORA DEL MESCHIO (7,7 X 6,7,8) : 0.000122
RUDY DEL DIANELLA (7 X 8,8) : 0.000122
DAGA (8,8 X 7,8,8) : 0.000061
ARTU (8,8 X 8) : 0.000061
DIN DEL MESCHIO (8 X 7) : 0.000061
CRISMANIOLAE (8 X 8,8,8,8,8,8,8) : 0.000061
IRIS DELLA BASSANA (7 X 8) : 0.000061
KENT DELLA MARCIOLA (8 X 8) : 0.000031
ALMAR LEDA (8 X 8,8,8,8,8,8) : 0.000031

Résultats expositions

Lieu	Date	Classe	Juge	Qualif.	Pts
IT Reggio Emilia (SPE)	2019-05-18	COF	Tagliaferri	RCACS	11
IT Mantova (SPE)	2019-08-19	COF	Balducci	TB	4
Total des points					15



Note : les données ne sont pas garanties. Elles ont été entrées par les membres sans garantie d'exactitude.

