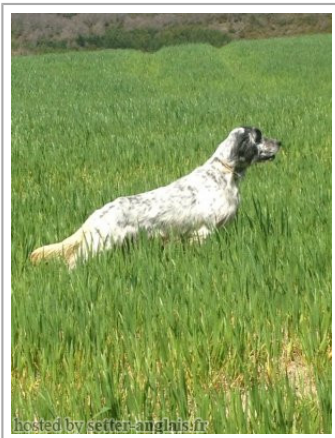
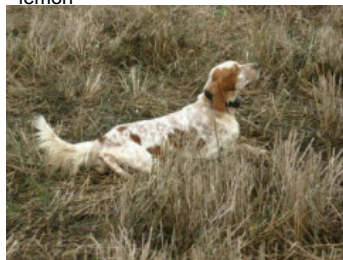


RADENTIS CIRO'

2010-01-15 (M) LOI LO1054605

Couleur : BLANCO NEGRO (bluebelton) / Titres : PAN
[fiche affixe](#)

Père
RADENTIS IGOR
2007-07-24 (M)
LOI LO0858253
- lemon



RADENTIS BOSS 1997-01-13 (M)
LOI ST559823 - lemon



RADENTIS FATA 2003-05-22 (F) LOI
LO0444018 - lemon



RADENTIS SBRANCO 1991-07-01
(M) LOI ST448908 (CH IB, Ch. Int. Lav.) -
lemon



ODE DEL SOLE 1993-09-10 (F) LOI
ST490145 - liver



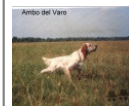
GIBELTARIK BLONDIE 2000-12-11
(F) LOI LO02122551 (CHIT.T) - lemon



RADENTIS BORG
1987-04-30 (M) LOI
ST350267 (Ch. Int.
Lav., CH GQ, Ch. Ital.
Lav., Camp. Ripr.) -
lemon

lemon

RADENTIS OLA 1984-09-30 (F) LOI
ST298174 - lemon



AMBO DEL VARO
1987-10-04 (M) LOI
ST360725 (Ch. Int. Lav.) -
lemon

JANA DEL SOLE 1987-01-05 (F) LOI
ST342352 - liver



ARNO 1988-04-17
(M) LOI ST374735
(Ch. Int. Lav., Camp.
Ripr., Ch. Ital. Lav.) -
lemon










PICENUM UNGA
1990-10-02 (F) LOI
ST430406 (CH GQ) -
liver

**DODGE DEL
TIRSO** 1998-02-14
(M) LOI LO9942918
(Ch IT IT-T, CHIB,
Camp. Tr. (Ch GQ)) -
bluebelton



RADENTIS ERICA
1995-05-25 (F) LOI
ST531494 ((CH(I)B)) -
lemon

<p>Mère <u>AMBRA</u> 2004-07-21 (F) LOI LO0519780 - bluebelton</p>	<p><u>RADENTIS BOSS</u> 1997-01-13 (M) LOI ST559823 - lemon</p> 	<p><u>RADENTIS SBRANCO</u> 1991-07-01 (M) LOI ST448908 (CH IB, Ch. Int. Lav.) - lemon</p> 	<p><u>RADENTIS BORG</u> 1987-04-30 (M) LOI ST350267 (Ch. Int. Lav., CH GQ, Ch. Ital. Lav., Camp. Ripr.) - lemon</p> 
	<p><u>FRANCINI'S MAILA</u> 2002-01-12 (F) LOI LO0285778 - bluebelton</p>	<p><u>ODE DEL SOLE</u> 1993-09-10 (F) LOI ST490145 - liver</p>	<p><u>FRANCINI'S JEFF</u> 1993-04-03 (M) LOI ST479317 (Ch. Ital. Lav., Ch. Int. Lav., Camp. Ripr.) - bluebelton</p> 
		<p><u>FRANCINI'S ITALIA</u> 1994-07-16 (F) LOI ST506099 - bluebelton</p>	<p><u>AMBO DEL VARO</u> 1987-10-04 (M) LOI ST360725 (Ch. Int. Lav.) - lemon</p> 
			<p><u>JANA DEL SOLE</u> 1987-01-05 (F) LOI ST342352 - liver</p>
			<p><u>FRANCINI'S LUCA</u> 1989-07-08 (M) LOI ST404483 (Ch. Ital. Lav., CH GQ, Ch. Int. Lav., Camp. Ripr.) - tricolore</p> 
			<p><u>FRANCINI'S SALLY</u> 1986-01-19 (F) LOI ST325298 (Camp. Ripr.) - bluebelton</p>
			<p><u>FRANCINI'S KIGA</u> 1986-02-09 (M) LOI ST325299 (Ch. Int. Lav., CH GQ, Ch. Ital. Lav., Camp. Ripr.) - bluebelton</p> 
			<p><u>FRANCINI'S MELODY</u> 1989-07-08 (F) LOI ST404486 - bluebelton</p>

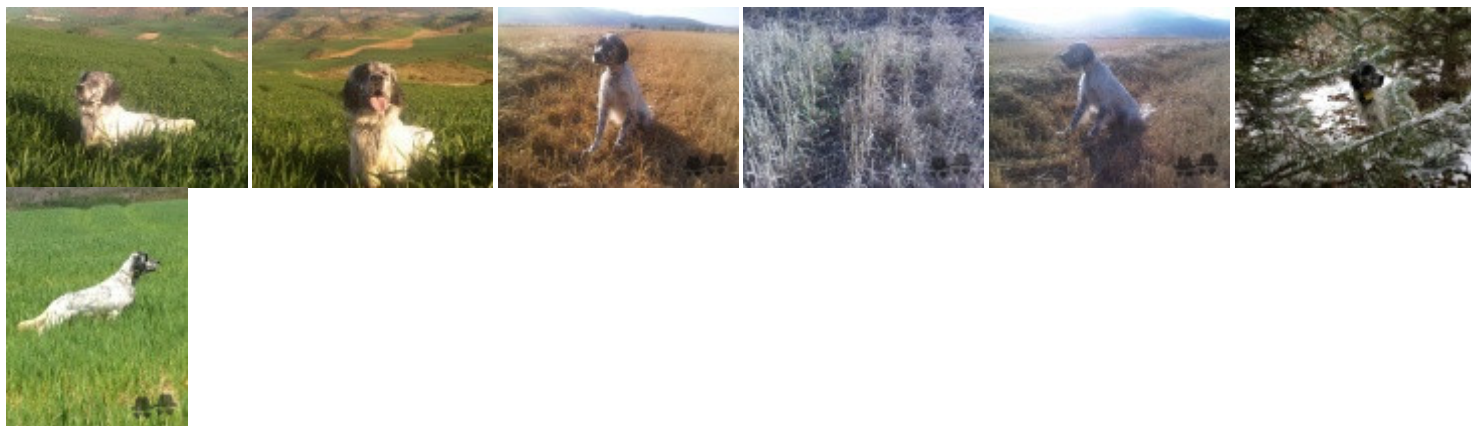
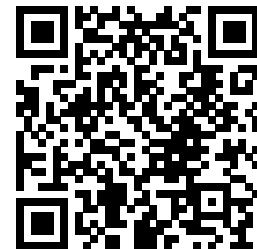
Eleveur : FABBRI ORLANDO / Propriétaire : Daniel Ursúa (daniursu@hotmail.com)

Puce : 380260040036236

Estimation des points au pédigrée : 11

Taux de consanguinité (estimation) : 16.4 %

RADENTIS BOSS (2 X 2) : 0.133911
RADENTIS SBRANCO (3,5 X 3) : 0.008362
ODE DEL SOLE (3,5 X 3) : 0.008240
DUN DEL MESCHIO (6,7,7,7,8,8,8,8,8,8 X 6,6,6,7,7,7,8,8,8,8) : 0.005463
DECOR LOT (6,6,6,6,7,7,7,8,8,8,8 X 6,6,6,6) : 0.003662
AMBO DEL VARO (4,6,6 X 4) : 0.002045
RADENTIS GIAN (5,5,7,7,7 X 5,5) : 0.001556
LEM DEL RESEGONE (8 X 6,6,7,7,7) : 0.000427
TRUEBA DELLA FAGIANA (8,8 X 8,8,8,8,8) : 0.000122
CRISMANI OLAF (7,8,8,8,8 X 7,7,7,8,8,8,8) : 0.000122
ARTU (8 X 8,8,8,8) : 0.000092
LINDO 3 DI CEREÀ (8,8 X 8,8,8) : 0.000061
MUR (7,8 X 7) : 0.000061



Note : les données ne sont pas garanties. Elles ont été entrées par les membres sans garantie d'exactitude.