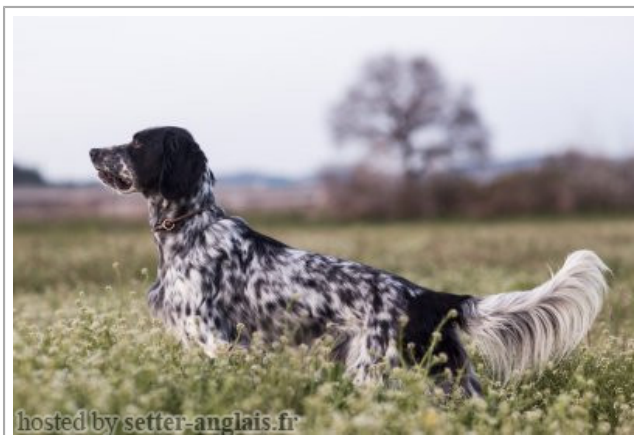
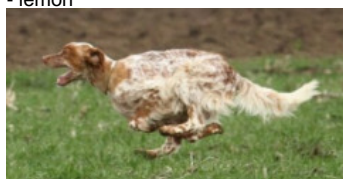


L'MITHAR

2018-03-25 (M) JR708772ES
Couleur : Bluebelton



Père
MORIS DEL DUDA
2013-03-15 (M)
JR70588ES
- lemon



RALF DEL SARGIADAE 2008-05-07
(M) LOI LO0911168 (CH GB) - lemon



ELLA ELLA DEL DUDA (F) JR703083
- lemon



ROONEY DEL SARGIADAE
2004-06-11 (M) LOI LO04120540 (Ch
GQ, Camp. Ital. Assol., Camp. Ital. Lav., Camp.
Int. Lav.) - bluebelton



RADENTIS GAIA 2002-01-18 (F) LOI
LO0286490 - liver

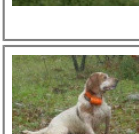


BOBET DI LORO PICENO
2003-08-10 (M) LOI LO041853 (Camp.
Tr. (Ch GQ), Ch Ital. Lav., ChIT) - tricolore



OKSA-DAMAR 2005-10-10 (F)
YU-JR700857ES (CH.IT.GQ)

BIG JIM 2000-12-01
(M) LOI LO0188207
(CH GQ, Ch. Int. Lav.,
Camp. Ripr., Ch. Ital. Lav.)
- liver



CASSIA 2002-03-19
(F) LOI LO02125347 -
lemon

RADENTIS NOMAR
1998-03-22 (M) LOI
LO98133353 ((CHGQ CHITF /
CHIT.B)) - liver



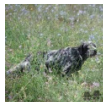


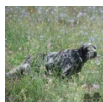
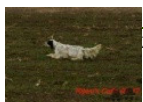
GIOIA 1998-03-28 (F) LOI
LO9926408 (Ch. Ital. Lav.) -
bluebelton

RADENTIS NOMAR
1998-03-22 (M) LOI
LO98133353 ((CHGQ CHITF /
CHIT.B)) - liver

TRUEBA DI LORO PICENO
1999-09-25 (F) LOI LO0049020 -
BIANCO MASCHERA ASIMMETRICA
SX E

ALVIS DINO 1999-02-19 (M) LOI
LO99122104 (Ch. Ital. Lav.) - bluebelton

RINA-VINI (F) JR778427ES (CH YU
Trail II-A.CAC-CACIB,CACIT4) - lemon

<p>Mère</p> <p>WIKI PAVLAKA JAGODINA 2016-05-10 (F) JR708009ES - bluebelton</p>	<p>THOR PAVLAKA JAGODINA 2014-02-12 (M) LOI LO1659237 (Camp. Trialler, Ch Int. Lav., Ch Ital. Lav.) - bluebelton</p> 	<p>RIJANIS T-KASTRO (M) JR704692ES</p> 	<p>ARTU 2009-06-20 (M) LOI LO09167530 - bluebelton</p> 	
		<p>KLEA PAVLAKA JAGODINA (F) JR705826ES</p>	<p>RIJANIS CALLA 2011-05-22 (F) 703549</p> 	<p>NILO 2009-07-01 (M) LOI LO09117721 - bluebelton</p> 
	<p>MASA PAVLAKA JAGODINA (F) JR706667ES</p>	<p>RIJANIS T.CAFFE (M) JR704626 - bluebelton</p>	<p>ARTU 2009-06-20 (M) LOI LO09167530 - bluebelton</p> 	<p>STEPHANENSIS FIONA (F) JR705825ES - bluebelton</p>
		<p>KLEA PAVLAKA JAGODINA (F) JR705826 - bluebelton</p>	<p>RIJANIS CALLA 2011-05-22 (F) 703549</p> 	<p>NILO (M) LOF BEK 1047 / 09ES</p> <p>STEPHANENSIS FIONA (F) JR705825ES - bluebelton</p>

Propriétaire : Hakan ??lek (Setter GREENPRUSA, hakanislek16@icloud.com)
 Puce : 963002000007358
 Sang italien (estimation) : 84 %
 Estimation des points au pédigrée : 19



Résultats concours

Lieu	Date	Type	Epreuve	N°	Juge	Conducteur	Qualif.	Pts
TR KONYA Spéciale	2020-10-03	Grande Quête	open	1	Ümit özkanal-Erdo?an Köro?lu	CAN GUCERI	CACIT	56
TR KONYA Spéciale	2020-10-04	Grande Quête	open	1	Ümit özkanal-Erdo?an Köro?lu	CAN GUCERI	CACIT	56
Total des points Challenge.Setter-anglais.fr 2020								112
Total des points								112
Coefficients : solo x1, couple x2 / GT x1, GN x2, GS (bécasse, bécassine) x2, GS montagne x3, Printemps x2, Grande Quête x4								



Note : les données ne sont pas garanties. Elles ont été entrées par les membres sans garantie d'exactitude.