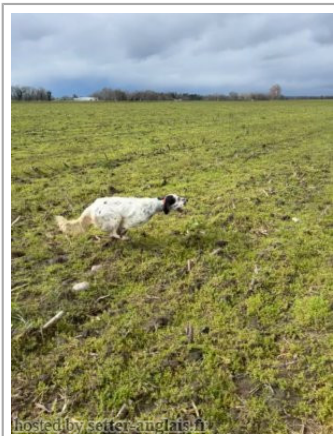


SOUM DE BUZUNTZA

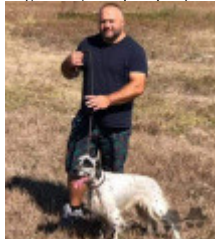
2021-03-22 (M) LOF 272388/46519
 Couleur : Noi. PBl.Env.Mou. (bluebelton) / Titres : TAN / Dyspl. : A
[fiche affixe](#)



Père
NÉOU DE L'ECHO DE SAINT JEAN
 2017-04-26 (M)
 LOF 249570/42616
 (TR)
 - bluebelton



MARZALE'S EUFRATE 2010-06-01
 (M) LOF 269095/44830 (CH GQ (Camp.
 Tr.), CH IT, Camp. Ripr.) - bluebelton



ORIO 2002-05-14 (M) LOI
 LO02116390 (Camp. Tr. (Ch GQ)) -
 bluebelton

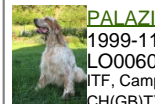


TODAY 2001-05-07
 (M) LOI LO01146212
 (Camp. Tr. (Ch GQ)) -
 bluebelton



TOSCA DELLE OROBICHE
 1999-11-19 (F) LOI LO0035313 (Camp.
 Ripr.) - bluebelton

PALAZIENSIS RAMBO
 1999-11-01 (M) LOI
 LO0060896 (Ch W0F/CH, IT T,
 ITF, Camp. Tr. (Ch GQ), CH(ES)T,
 CH(GB)T) - lemon



MEA 2002-05-07 (F) LOI LO0295505
 (CH(I)B) - tricolore

PALAZIENSIS RAMBO
 1999-11-01 (M) LOI
 LO0060896 (Ch W0F/CH, IT T,
 ITF, Camp. Tr. (Ch GQ), CH(ES)T,
 CH(GB)T) - lemon



GAONA DE L'ECHO DE LA FORET
 2011-05-24 (F) LOF 216306/44595
 (TAN, TAC) - lemon



BRANDO DE L'ECHO DE LA FORET
 2006-05-08 (M) LOF 186807/30645
 (CH.T. -VVOF/FTA -CHTGS -CHP -CHA
 -TRGQ -TR) - lemon



SINE DE L'ECHO DE LA FORET
 2001-05-13 (F) LOF
 160977/30671 (TR) -
 lemon



AVEN DE L'ECHO DE LA FORET
 2005-03-27 (F) LOF 180041/34416
 (TR, CH A) - lemon

















OURAL DE L'ECHO DE LA FORET 1998-03-02
 (M) LOF
 141973/23012 (CHA
 -TR) - tricolore



MIDINE DES BOIS GEMMES 1996-02-07
 (F) LOF 131323/24625
 (CHP -TR) - lemon



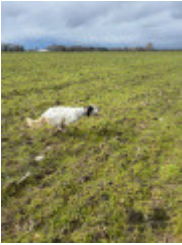
<p>Mère</p> <p>LAPAR DES PICS BIGOURDANS 2015-06-17 (F) LOF 239903/48798 (TAN) - bluebelton</p> 	<p>GERNIKA DE BUZUNTZA 2011-03-14 (M) LOF 214826/36377 (CH GS, CH IT, TR) - bluebelton</p> 	<p>TWIST DES BERGES DE LA GÉLINE 2002-07-20 (M) LOF 168427/27296 (TRGQ) - bluebelton</p> 	<p>BRUGGE DEL SOLE 1992-05-24 (M) LOI ST465125 (Ch P, Tr GQ) - liver</p> 
	<p>HAÏZEA DE BUZUNTZA 2012-11-01 (F) LOF 225809/44757 - bluebelton</p> 	<p>BIBA DE BUZUNTZA 2006-06-04 (F) LOF 187327/36349 (TR) - bluebelton</p> 	<p>RACINE DES BERGES DE LA GÉLINE 2000-10-13 (F) LOF 157877/29873 - bluebelton</p> 
	<p>ERNEE DES SEPT PROVINCES 2009-06-18 (M) LOF 206858/34324 (CH T, TR GQ) - bluebelton</p> 	<p>ULKA DE BUZUNTZA 2003-09-04 (F) LOF 173829/33254 (CH A, TR) - lemon</p> 	<p>RADENTIS BILLO 2001-10-25 (M) LOE 1376724 (Ch GQ) - lemon</p> 
	<p>COSITAS DE BUZUNTZA 2007-06-15 (F) LOF 193353/40677 (TR, CH IT) - tricolore</p> 	<p>C'XASKI DES SEPT PROVINCES 2007-04-12 (F) LOF 193721/38842 - bluebelton</p> 	<p>SARRI DE BUZUNTZA 2001-05-05 (M) LOF 159396/27307 (TR) - tricolore</p> 
		<p>ULKA DE BUZUNTZA 2003-09-04 (F) LOF 173829/33254 (CH A, TR) - lemon</p> 	

Propriétaire : LOUIS AYCAGUER
ADN-compatible Père.
Puce : 250268743794972
Dépôt ADN
Sang italien (estimation) : 71 %
Estimation des points au pédigrée : 32



Résultats concours

Lieu	Date	Type	Epreuve	N°	Juge	Conducteur	Qualif.	Pts
FR SAINT ETIENNE D'ORTHE	2022-08-06	TAN		4	HENOCQUE	HERRAN ANTHONY	TAN	0
Total des points Challenge Setter-anglais.fr 2022								0
FR BRAUD-ET-SAINT-LOUIS ICVO	2024-03-02	Bécassine	solo	4	BERTHELOT PATRICK	CHIARRI ROMAIN	4 EXC	14
Quête ayant de l'étendue sur les côtés, mais de manière discontinue. A le mérite d'arrêter deux lièvres et de les respecter. Cependant, cela le perturbe passablement, surtout le premier. Il finit son parcours en prenant un excellent point sur une bécassine en bordure d'une roselière. SEF.								
Total des points Challenge Setter-anglais.fr 2024								14
Total des points								14
Coefficients : solo x1, couple x2 / GT x1, GN x2, GS (bécasse, bécassine) x2, GS montagne x3, Printemps x2, Grande Quête x4								



Note : les données ne sont pas garanties. Elles ont été entrées par les membres sans garantie d'exactitude.