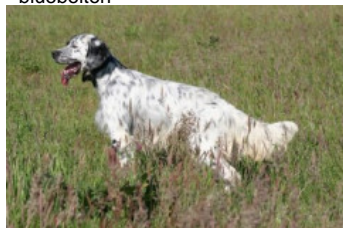


GLAZIG DE KERILIZ

2011-10-06 (F) LOF 219463/43692

Couleur : Noi.Mar.Fau.PBl.Env (tricolore) / Dyspl. : B
[fiche affixe](#)

Père
DECO OF GLEN SHEALLAG
2008-04-28 (M)
LOF 197099/32746
(Ch A, CH GT)
- bluebelton



VACARM DU MAS D'EYRAUD
2004-10-08 (M) LOF 178562/29625
(TR, CH A, CH T) - bluebelton



BIRBA 2000-06-14 (F) LOF
159263/28850 - tricolore



STING DU MAS D'EYRAUD

2001-10-22 (M) LOF 162122/26286
(Ch VOF FTP, Ch T P A) - bluebelton



RADENTIS ODE 2003-02-18 (F) LOF
175116/32207 (Recommandée) - lemon



PRIMO DU MAS D'EYRAUD

1999-06-06 (M) LOF 148381/24573 -
bluebelton

PASTELLE DU MAS D'EYRAUD

1999-03-11 (F) LOF 147097/27221 -
lemon

GIBELTARIK BORIS
2000-12-14 (M)
GKC02014 (Ch T GQ) -
liver



ARIET ALESS SETTER 2000-02-15
(F) LOI LO0058153 - bluebelton



**LORD DEL
DIANELLA**
1981-04-05 (M)
LOI ST234361
(Ch. Ital. Lav.) -

bluebelton

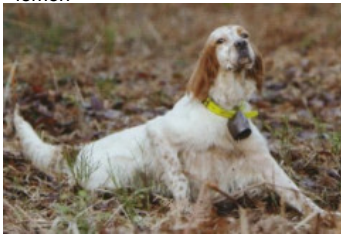








MAIA 1985-01-02 (F) LOI ST302360 -
tricolore



DÉRO 1990-04-27 (M)
LOI ST423463 (Ch. Ital.
Lav.) - bluebelton

HAI DI 1997-04-10 (F) LOI ST560818 -
lemon

BRINA 1994-06-10 (F) LOI ST499536
- bluebelton

<p>Mère <u>VOIA DU MAS D'EYRAUD</u> 2004-11-27 (F) LOF 178583/34403 (CHA) - lemon</p> 	<p><u>PANGO DU MAS D'EYRAUD</u> 1999-06-15 (M) LOF 148377/24028 (TR CHA CHP CH.T. VOF/FTA) - lemon</p> 	<p><u>RADENTIS SBRANCO</u> 1991-07-01 (M) LOI ST448908 (CH IB, Ch. Int. Lav.) - lemon</p> 	<p><u>RADENTIS BORG</u> 1987-04-30 (M) LOI ST350267 (Ch. Int. Lav., CH GQ, Ch. Ital. Lav., Camp. Ripr.) - lemon</p> 
	<p><u>TCHANG DU MAS D'EYRAUD</u> 2002-08-10 (F) LOF 166431/31600 (Ch P) - lemon</p> 	<p><u>JACA DE CODORNIS</u> 1994-08-10 (F) LOF 124520/22300 (Recommandée) - lemon</p>	<p><u>RADENTIS SBRANCO</u> 1991-07-01 (M) LOI ST448908 (CH IB, Ch. Int. Lav.) - lemon</p> 
		<p><u>RITA DU MAS D'EYRAUD</u> 2000-05-29 (F) LOF 154090/29079 - lemon</p> 	<p><u>HEIDI DU CLOS SAINTE CATHERINE</u> 1992-05-15 (F) LOF 113334/20093 - lemon</p>
			<p><u>RADENTIS BORG</u> 1987-04-30 (M) LOI ST350267 (Ch. Int. Lav., CH GQ, Ch. Ital. Lav., Camp. Ripr.) - lemon</p> 
			<p><u>RADENTIS OLA</u> 1984-09-30 (F) LOI ST298174 - lemon</p>
			<p><u>GEX DU VAL DU RUTH</u> 1991-08-30 (M) LOF 111219/15890 (TR GQ) - lemon</p> 
			<p><u>MALINE</u> 1996-05-17 (F) LOF 133269/24239 - lemon</p>

Eleveur : HERVE LANNUZEL / Propriétaire : LANNUZEL Herve (02 98 57 91 32)

Cotation : 1

Puce : 250269500476600

Sang italien (estimation) : 85 %

Estimation des points au pédigrée : 36

Taux de consanguinité (estimation) : 2.6 %

RADENTIS SBRANCO (6 X 3,3) : 0.007812
DECOR LOTI (7,8,8,8,8 X 6,6,6,6,6,6,6) : 0.004517
MALINE (5 X 4) : 0.004028
RADENTIS GIAN (7,7,8,8,8 X 5,5) : 0.002930
DUN DEL MESHIO (6,8 X 7,7,7,8,8,8,8,8,8,8,8) : 0.002289
ALMER (7,8,8 X 5,7,7) : 0.001221
LEM DEL RESEGONE (6,7,8 X 7,8) : 0.000641
FIorentina DEL BIDENTE (7 X 6,6) : 0.000488
ROYAL MOZART (7 X 5) : 0.000488
DEM (8,8,8 X 6) : 0.000366
COW BOY DES RIVES DE L'ESTRIGON (7 X 6,6) : 0.000244
VIMON REVEL (8,8,8 X 8,8) : 0.000183
CRISMANI OLAF (7,7 X 8,8,8) : 0.000183
RAYA DE LA BASSE DORDOGNE (7,8 X 7) : 0.000122
UNE BELLE DE KERFEUIL (8 X 6,7) : 0.000122
TRUEBA DELLA FAGIANA (8 X 8,8) : 0.000061
SAVINA DI ENTELLA (8 X 8) : 0.000031



Note : les données ne sont pas garanties. Elles ont été entrées par les membres sans garantie d'exactitude.

