

FAROUK DE BASSEGAS

2010-07-30 (M) LOF 212481/36792
Couleur : Noï. PBI.Env.Mou. (bluebelton)
[fiche affixe](#)

Père
AKIM DE BASSEGAS
2005-07-26 (M)
LOF 183408/30352
(TAN)
- bluebelton



© Eric BEAULIEU - <http://fieldtrial.free.fr>

BIG JIM 2000-12-01 (M) LOI
LO0188207 (CH GQ, Ch. Int. Lav., Camp.
Ripr., Ch. Ital. Lav.) - liver



SALOMA DU MAS D'EYRAUD
2001-06-25 (F) LOF 161271/30926
(TR) - bluebelton



LERRY 1997-02-14 (M) LOI
ST555862 (Ch GQ, Ch IT) - bluebelton



RADENTIS TANGA 1998-09-15 (F)
LOI LO9958147 - lemon



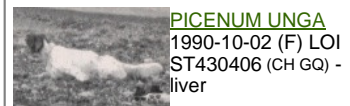
PLAYEL OF GLEN SHEALLAG
1999-07-02 (M) LOF 150317/24084
(Ch P) - bluebelton



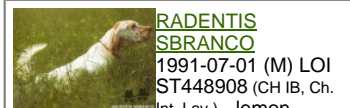
MAELA DU VAL DE L'AGLY
1996-05-07 (F) LOF 132389/24485 -
tricolore



ARNO 1988-04-17
(M) LOI ST374735
(Ch. Int. Lav., Camp.
Ripr., Ch. Ital. Lav.) -
lemon



PICENUM UNGA
1990-10-02 (F) LOI
ST430406 (CH GQ) -
liver



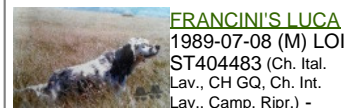
**RADENTIS
SBRANCO**
1991-07-01 (M) LOI
ST448908 (CH IB, Ch.
Int. Lav.) - lemon

BESSY 1995-02-10 (F) LOI ST515746
- lemon



BEETHOVEN
1995-03-17 (M) LOI
ST519907 (CH, Camp. Ripr.)
- bluebelton

GLOVER DU MAS D'EYRAUD
1991-05-15 (F) LOF 108281/21614
(CH P, CH T) - bluebelton

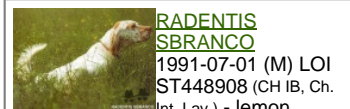


FRANCINI'S LUCA
1989-07-08 (M) LOI
ST404483 (Ch. Ital.
Lav., CH GQ, Ch. Int.
Lav., Camp. Ripr.) -

tricolore



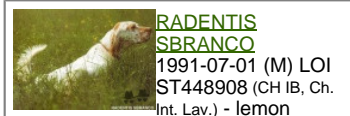
HERPIE DE ROCMIGNON
1992-06-07 (F) LOF
114943/19695 (TR GQ) -
tricolore



**RADENTIS
SBRANCO**
1991-07-01 (M) LOI
ST448908 (CH IB, Ch.
Int. Lav.) - lemon

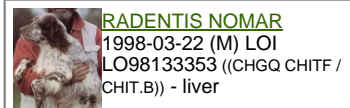


**KELLI DELLA
MARIKA** 1995-08-06
(F) LOI ST530204 (Ch.
Ital. Lav.) - bluebelton



**RADENTIS
SBRANCO**
1991-07-01 (M) LOI
ST448908 (CH IB, Ch.
Int. Lav.) - lemon

RADENTIS ALICE 1995-03-19 (F) LOI
ST519851 - tricolore



RADENTIS NOMAR
1998-03-22 (M) LOI
LO98133353 ((CHGQ CHITF /
CHIT.B)) - liver

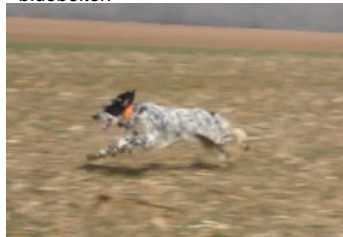
ASIA 2000-01-27 (F) LOI LO005139
- lemon



**GEX DU VAL DU
RUTH** 1991-08-30 (M)
LOF 111219/15890 (TR
GQ) - lemon

MALINE 1996-05-17 (F) LOF
133269/24239 - lemon

Mère
DJALIE DU MAS D'EYRAUD
2008-04-26 (F)
LOF 197010/39756
- bluebelton



RADENTIS NOBEL 2003-01-08 (M)
LOF 181281/28903 (CHP CHA CH.T.) -
bluebelton



VISTA DU MAS D'EYRAUD
2004-05-31 (F) LOF 176273/33679 -
liver



RADENTIS NOMAR 1998-03-22 (M)
LOI LO98133353 ((CHGQ CHITF /
CHIT.B)) - liver



RADENTIS MISS 1998-01-10 (F) LOI
LO98106558 - lemon



RADENTIS SENNA 2003-01-02 (M)
LOI LO0366867 - bluebelton



RITA DU MAS D'EYRAUD
2000-05-29 (F) LOF 154090/29079 -
lemon



Eleveur : DI MARINO PASCAL
Cotation : 1
Puce : 250268500414806
Sang italien (estimation) : 87 %
Estimation des points au pédigrée : 20

Taux de consanguinité (estimation) : 3.7 %

RADENTIS SBRANCO (4 X 4,4,5) : 0.020752
RADENTIS BORG (5 X 5,5,5,5,6,6) : 0.004883
DECOR LOT (7,7,7,7 X 6,7,7,7,7,7,7,7,7,8,8,8,8) : 0.003418
FRANCINI'S LUCA (4 X 6,7) : 0.002930
DUN DEL MESCHIO (6,7,8,8,8,8 X 7,8,8,8,8,8,8,8) : 0.002533
DEM (5 X 6,7,8) : 0.000977
ALMER (5 X 7,7) : 0.000977
RADENTIS GIAN (6 X 6,6,6,6,6,7,7,8) : 0.000610
LEM DEL RESEGONE (7,7,8 X 8) : 0.000153
FRANCINI'S VANITY (6,8,8 X 8) : 0.000061



Note : les données ne sont pas garanties. Elles ont été entrées par les membres sans garantie d'exactitude.