

**FILLE DE BASSEGAS**

2010-07-30 (F) LOF 212486  
Couleur : Noï. PBI.Env.Mou. (bluebelton)  
[fiche affixe](#)

Père  
**AKIM DE BASSEGAS**  
2005-07-26 (M)  
LOF 183408/30352  
(TAN)  
- bluebelton



© Eric BEAULIEU - <http://fieldtrial.free.fr>

**BIG JIM** 2000-12-01 (M) LOI  
LO0188207 (CH GQ, Ch. Int. Lav., Camp.  
Ripr., Ch. Ital. Lav.) - liver



**SALOMA DU MAS D'EYRAUD**  
2001-06-25 (F) LOF 161271/30926  
(TR) - bluebelton



**LERRY** 1997-02-14 (M) LOI  
ST555862 (Ch GQ, Ch IT) - bluebelton



**RADENTIS TANGA** 1998-09-15 (F)  
LOI LO9958147 - lemon



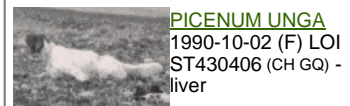
**PLAYEL OF GLEN SHEALLAG**  
1999-07-02 (M) LOF 150317/24084  
(Ch P) - bluebelton



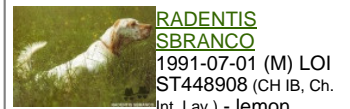
**MAELA DU VAL DE L'AGLY**  
1996-05-07 (F) LOF 132389/24485 -  
tricolore



**ARNO** 1988-04-17  
(M) LOI ST374735  
(Ch. Int. Lav., Camp.  
Ripr., Ch. Ital. Lav.) -  
lemon



**PICENUM UNGA**  
1990-10-02 (F) LOI  
ST430406 (CH GQ) -  
liver



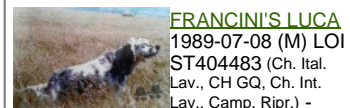
**RADENTIS  
SBRANCO**  
1991-07-01 (M) LOI  
ST448908 (CH IB, Ch.  
Int. Lav.) - lemon

**BESSY** 1995-02-10 (F) LOI ST515746  
- lemon



**BEETHOVEN**  
1995-03-17 (M) LOI  
ST519907 (CH, Camp. Ripr.)  
- bluebelton

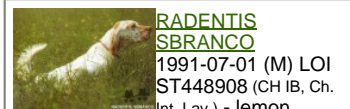
**GLOVER DU MAS D'EYRAUD**  
1991-05-15 (F) LOF 108281/21614  
(CH P, CH T) - bluebelton



**FRANCINI'S LUCA**  
1989-07-08 (M) LOI  
ST404483 (Ch. Ital.  
Lav., CH GQ, Ch. Int.  
Lav., Camp. Ripr.) -



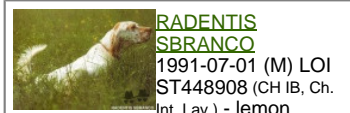
**HERPIE DE ROCMIGNON**  
1992-06-07 (F) LOF  
114943/19695 (TR GQ) -  
tricolore



**RADENTIS  
SBRANCO**  
1991-07-01 (M) LOI  
ST448908 (CH IB, Ch.  
Int. Lav.) - lemon

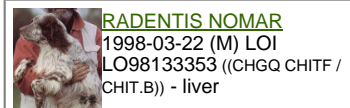


**KELLI DELLA  
MARIKA** 1995-08-06  
(F) LOI ST530204 (Ch.  
Ital. Lav.) - bluebelton



**RADENTIS  
SBRANCO**  
1991-07-01 (M) LOI  
ST448908 (CH IB, Ch.  
Int. Lav.) - lemon

**RADENTIS ALICE** 1995-03-19 (F) LOI  
ST519851 - tricolore



**RADENTIS NOMAR**  
1998-03-22 (M) LOI  
LO98133353 ((CHGQ CHITF /  
CHIT.B)) - liver

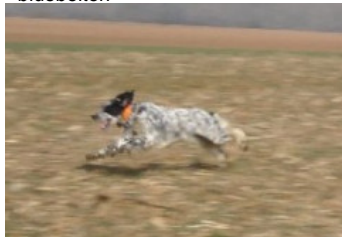
**ASIA** 2000-01-27 (F) LOI LO005139  
- lemon



**GEX DU VAL DU  
RUTH** 1991-08-30 (M)  
LOF 111219/15890 (TR  
GQ) - lemon

**MALINE** 1996-05-17 (F) LOF  
133269/24239 - lemon

Mère  
**DJALIE DU MAS D'EYRAUD**  
2008-04-26 (F)  
LOF 197010/39756  
- bluebelton



**RADENTIS NOBEL** 2003-01-08 (M)  
LOF 181281/28903 (CHP CHA CH.T.) -  
bluebelton



**VISTA DU MAS D'EYRAUD**  
2004-05-31 (F) LOF 176273/33679 -  
liver



**RADENTIS NOMAR** 1998-03-22 (M)  
LOI LO98133353 ((CHGQ CHITF /  
CHIT.B)) - liver



**RADENTIS MISS** 1998-01-10 (F) LOI  
LO98106558 - lemon



**RADENTIS SENNA** 2003-01-02 (M)  
LOI LO0366867 - bluebelton



**RITA DU MAS D'EYRAUD**  
2000-05-29 (F) LOF 154090/29079 -  
lemon



Eleveur : DI MARINO PASCAL  
Puce : 250268500414798  
Sang italien (estimation) : 87 %  
Estimation des points au pédigrée : 20

## Taux de consanguinité (estimation) : 3.7 %

RADENTIS SBRANCO (4 X 4,4,5) : 0.020752  
RADENTIS BORG (5 X 5,5,5,5,6,6) : 0.004883  
DECOR LOT (7,7,7,7 X 6,7,7,7,7,7,7,7,8,8,8,8) : 0.003418  
FRANCINI'S LUCA (4 X 6,7) : 0.002930  
DUN DEL MESCHIO (6,7,8,8,8,8 X 7,8,8,8,8,8,8,8) : 0.002533  
DEM (5 X 6,7,8) : 0.000977  
ALMER (5 X 7,7) : 0.000977  
RADENTIS GIAN (6 X 6,6,6,6,6,7,7,8) : 0.000610  
LEM DEL RESEGONE (7,7,8 X 8) : 0.000153  
FRANCINI'S VANITY (6,8,8 X 8) : 0.000061



Note : les données ne sont pas garanties. Elles ont été entrées par les membres sans garantie d'exactitude.