

LUR DE PIEDRALLADA dit TIRY

2008-04-09 (M) LOE 1784450

Couleur : Noi.Mar.Fau.PBl.Env (tricolore) / Titres : PAN
[fiche affixe](#)

Père
[EUSKITZE ARNO](#)
2001-08-28 (M)
LOE 1283964
- lemon



[RADENTIS D'ESPANA](#) 1995-05-22
(M) LOE 990823 (Ch IT B, Ch GQ) -
lemon



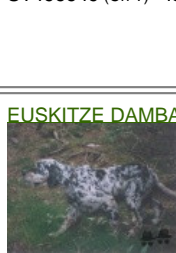
[NESKA](#) 1997-09-02 (F) LOE 873632
(Ch IT) - tricolore



[RADENTIS SBRANCO](#) 1991-07-01
(M) LOI ST448908 (CH IB, Ch. Int. Lav.) -
lemon



[RADENTIS ALA](#) 1994-03-15 (F) LOI
ST496649 (Ch T) - lemon



[CINA DE GONZA LOSA](#) (F) LOE
640953 (Champion)



[RADENTIS BORG](#)
1987-04-30 (M) LOI
ST350267 (Ch. Int.
Lav., CH GQ, Ch. Ital.
Lav., Camp. Ripr.) -

lemon

[RADENTIS OLA](#) 1984-09-30 (F) LOI
ST298174 - lemon

[RADENTIS BORG](#)
1987-04-30 (M) LOI
ST350267 (Ch. Int.
Lav., CH GQ, Ch. Ital.
Lav., Camp. Ripr.) -

lemon

[RADENTIS RAISSA](#) 1991-05-30 (F)
LOI ST448920 - lemon







[BOI](#) 1984-02-20 (M)
LOF 96481/12378
(TR) - bluebelton

[OREKA BERA](#) (F) LOE 442377 (Ch T
CH IT)

[LIY OD BENCICA](#) (M) LOE 522104

[GARA DE
PLAYABARRI](#) (F) LOE
480887



<p>Mère <u>TALI</u> 2002-01-13 (F) LOI LO0275459 - tricolore</p> 	<p><u>NERO</u> 1997-03-29 (M) LOI LO9817889 (Ch T, Ch GQ) - bluebelton</p> 	<p><u>GUFO DI VAL DI CHIANA</u> 1994-04-01 (M) LOI ST514177 (Ch GQ) - bluebelton</p> 	<p><u>NEGUS</u> 1988-09-05 (M) LOI ST382982 (Camp. Tr. (Ch GQ), Camp. Int. Lav (Ch I T)) - bluebelton</p>
	<p><u>SHIFFER</u> 1996-07-13 (F) LOI ST547867 - bluebelton</p>	<p><u>KELLI</u> 1992-06-18 (F) LOI ST466220 - bluebelton</p> 	<p><u>BRUNA</u> 1985-01-01 (F) LOI ST299858 (Ch L Ch Int) - bluebelton</p>
		<p><u>FRANCINI'S ROCKY</u> 1989-02-25 (M) LOI ST409893 (Ch. Int. Lav., Ch. Ital. Lav.) - bluebelton</p> 	<p><u>FRANCINI'S ASTON</u> 1986-01-19 (M) LOI ST325293 (Camp. Ripr., Ch. Int. Lav., Ch. Ital. Lav.) - bluebelton</p>
		<p><u>FRANCINI'S BRIGITTE</u> 1994-03-01 (F) LOI ST501610 - tricolore</p>	<p><u>FRANCINI'S ODETTTE</u> 1984-10-26 (F) LOI ST301903 (Camp. Ripr.) - bluebelton</p>
			<p><u>FRANCINI'S LUCA</u> 1989-07-08 (M) LOI ST404483 (Ch. Ital. Lav., CH GQ, Ch. Int. Lav., Camp. Ripr.) - tricolore</p> 
			<p><u>CORA</u> 1989-02-10 (F) LOI ST392511 - bluebelton</p>

Propriétaire : Francisco rodriguez (635413991, lokykamikaze@hotmail.com)

Tatouage : 090112J

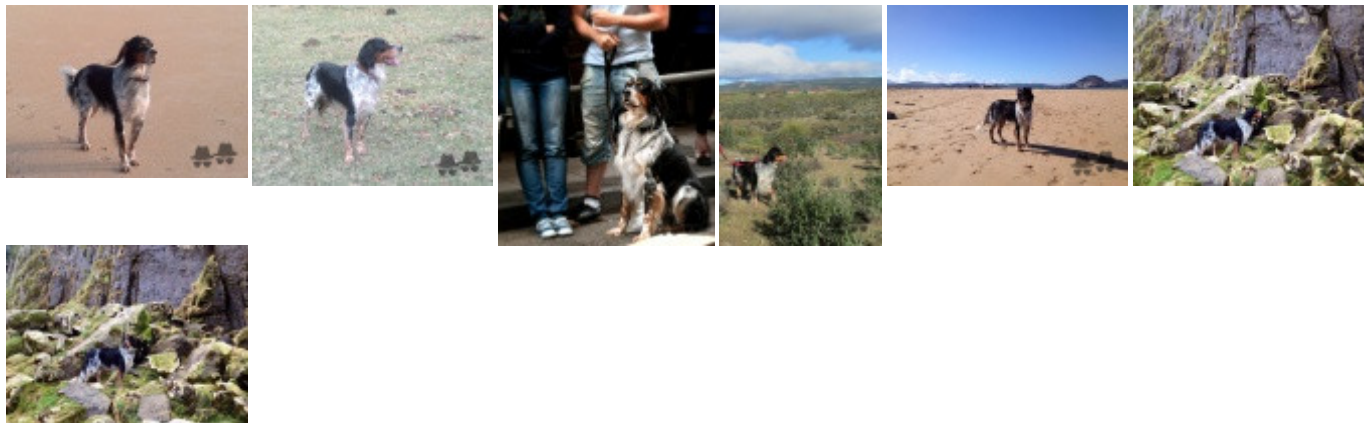
Puce : 941000002820539

Sang italien (estimation) : 100 %

Estimation des points au pédigrée : 27

Taux de consanguinité (estimation) : 1.6 %

DECOR LOT (6,6,6,6,7,7,8,8,8 X 5) : 0.005615
DUN DEL MESCHIO (7,7,8,8,8,8,8,8 X 6,7,7,8) : 0.002777
LEM DEL RESEGONE (6,7,8 X 6,7,7,7,8) : 0.002777
OLAF DEL TRE PONTI (6,7 X 5,6) : 0.002197
ORFEO DELLA TRAPPOLA (5,7,8 X 6) : 0.001343
ROSETTE (7 X 5,6) : 0.000732
TRUEBA DELLA FAGIANA (8,8 X 7,8,8,8) : 0.000305
ARTU (8 X 7,7,8,8,8,8,8,8) : 0.000214
LINDO 3 DI CEREÀ (8,8,8 X 7) : 0.000183
VIMON REVEL (8 X 8,8,8) : 0.000092
ARNO IL DI VAL D'IDICE (8,8 X 8) : 0.000061
DICH DI VAL D'IDICE (8 X 8) : 0.000031
DAMA 17 (8 X 8) : 0.000031
MISS 3 DELLE VALLATE (8 X 7,8,8,8) : 0.000031
ALMAR DARMA (8 X 8) : 0.000031
CORA DEL VOLO (8 X 8,8) : 0.000031



Note : les données ne sont pas garanties. Elles ont été entrées par les membres sans garantie d'exactitude.