

**NENCINI'S DAKOTA**

2020-07-09 (M) LOI LO20122399  
Couleur : nero e bianco (bluebelton)  
[fiche affixe](#)

Père  
**NENCINI'S SIRENTE**  
2013-05-04 (M)  
LOI LO1411773  
- tricolore



**RADENTIS CARUSO** 2010-01-15 (M)  
LOI LO1054608 - tricolore



**GINEVRA DELL'ABAZIA** 2010-06-06  
(F) LOI LO10169846 - tricolore

**RADENTIS IGOR** 2007-07-24 (M) LOI  
LO0858253 - lemon



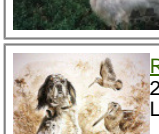
**AMBRA** 2004-07-21 (F) LOI  
LO0519780 - bluebelton

**MUR DELL'ABAZIA** 2003-08-10 (M)  
LOI LO047122 (Camp. Ital. Lav.) -  
tricolore



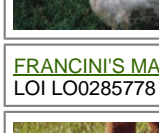
**EMY DELL'ABAZIA** 2007-03-14 (F)  
LOI LO0793972 - bluebelton

**RADENTIS BOSS**  
1997-01-13 (M) LOI  
ST559823 - lemon



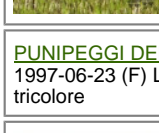
**RADENTIS FATA**  
2003-05-22 (F) LOI  
LO0444018 - lemon

**RADENTIS BOSS**  
1997-01-13 (M) LOI  
ST559823 - lemon



**FRANCINI'S MAILA** 2002-01-12 (F)  
LOI LO0285778 - bluebelton

**FIERO** 1996-08-10  
(M) LOI ST551356  
(CHGQ, Ch ITF, Ch IB, Ch  
ITT) - lemon



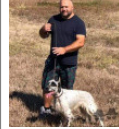
**PUNIPEGGI DELL'ABAZIA**  
1997-06-23 (F) LOI LO98109146 -  
tricolore

**KAPO'** 2003-11-10  
(M) LOI LO0439835  
(Ch IT GQ) - bluebelton



**ASIA** 2000-10-23 (F) LOI LO0180242  
- lemon

**MARZALE'S EUFRATE** 2010-06-01  
(M) LOF 269095/44830 (CH GQ (Camp.  
Tr.), CH IT, Camp. Ripro.) - bluebelton



**NENCINI'S SELVAGGIA** 2008-06-17  
(F) LOI LO0936095 (CH(I)B, Ch. Ital. Lav.)  
- lemon



**IU' DEI LADERCHI** 2004-10-02 (M)  
LOI LO0541547 - lemon



**BALGI'S FLORA** 2007-01-20 (F) LOI  
LO0760979 - bluebelton



**ORIO** 2002-05-14  
(M) LOI  
LO02116390  
(Camp. Tr. (Ch GQ)) -  
bluebelton



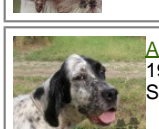
**BICEZIA DELLA  
RISERVA REALE**  
2007-07-18 (F) LOI  
LO0879129 (Camp. Ripr.)  
- bluebelton

**BERNIE DEI  
QUARTI** 2003-10-20  
(M) LOI LO0429137  
(Ch. Ital. Lav., Ch. Int.  
Lav.) - tricolore



**NENCINI'S TINA**  
2006-04-05 (F) LOI  
LO06129041 (Ch. Ital.  
Lav., Ch Int. Lav., Ch Ital.  
Bell., Ch Assoluto) -  
tricolore

**RADENTIS NOMAR**  
1998-03-22 (M) LOI  
LO98133353 ((CHGQ CHITF /  
CHIT.B)) - liver



**ASIA DEI LADERCHI**  
1996-03-23 (F) LOI  
ST554774 - bluebelton

**BALGI'S RED** 2004-08-22 (M) LOI  
LO0543436 (Ch. Ital. Lav.) - bluebelton

**BALGI'S ILIA** 2002-08-05 (F) LOI  
LO02121917 - bluebelton

Mère  
**NENCINI'S LUNA**  
2015-06-15 (F)  
LOI LO15135990  
- bluebelton

**NENCINI'S GEKO** 2014-04-25 (M)  
LOI LO1481296 - bluebelton



**NENCINI'S VODA** 2010-11-08 (F) LOI  
LO1138405 - bluebelton

Estimation des points au pédigrée : 7

## Taux de consanguinité (estimation) : 1.7 %

RADENTIS SBRANCO (5,5,7 X 5,6,8) : 0.007587  
RADENTIS GIAN (6,7,7,7,7,8,8 X 7,7,8,8,8) : 0.002380  
NEGUS (6,6,7,8,8 X 7,7) : 0.001465  
RADENTIS BORG (6,6,8 X 6,6,7) : 0.001099  
ARNO (5,6 X 7,8) : 0.000977  
FRANCINI'S LUCA (6 X 7,7,8,8,8) : 0.000732  
DECOR LOT (7,8,8,8,8,8,8,8,8,8 X 8,8,8,8) : 0.000732  
FRANCINI'S JEFF (5 X 7) : 0.000504  
RALF DEL DIANELLA (7,7 X 7,7) : 0.000488  
LERRY (5 X 7) : 0.000488  
DEM (7,7 X 8,8,8) : 0.000244  
FRANCINI'S LORI (7,7 X 8,8) : 0.000122  
LEM DEL DIANELLA (7,7,7,8 X 8,8) : 0.000122  
ROYAL VIENNA (7,7 X 8) : 0.000122  
OLAF DEL TRE PONTI (8,8,8 X 8) : 0.000092  
FRANCINI'S RAS (7,8 X 8) : 0.000092  
RUDY DEL DIANELLA (7 X 8) : 0.000061  
MERA DELL ORSONE (8,8,8 X 8,8) : 0.000061  
LEM DEL RESEGONE (8,8,8 X 8,8) : 0.000061  
ROYAL MOZART (8 X 8) : 0.000031  
EMO DELLA TRAPPOLA (8 X 8) : 0.000031



Note : les données ne sont pas garanties. Elles ont été entrées par les membres sans garantie d'exactitude.