

FIDJI DELLA CRUISMANY

2010-04-15 (F) LOF 209690
Couleur : Noï. PBI.Env.Mou. (bluebelton)
[fiche affixe](#)

Père
BOSTON DELLA CRUISMANY
2006-07-31 (M)
LOF 189333/31257
- bluebelton



UTONY DELLA BASSANA dit TONY
2003-06-09 (M) LOF 179293/28507
(Ch IB) - bluebelton

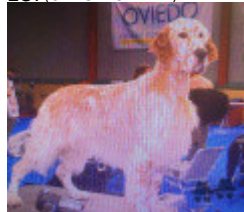


OPALINE LE FOYER DU SETTER
1998-06-11 (F) LOF 147883/26340 -
tricolore

Mère
LITTLE PRINCESS ZUASTI
2004-05-28 (F)
LOF 189119/35316
- lemon



ONASSIS DE LOS VITORONES (M)
LOI (CHES.B CHPT.B)



MIDNIGHTSUMMER DE LOS VITORONES (F) LOI (CHES.B)



BOSS DELLA BASSANA 1998-07-07
(M) LOI LO9937795 (CH ITAL BOB) -
bluebelton



GEM DELLA BASSANA 2000-02-22
(F) LOI LO0158644 (CH IB, Camp. Ripr.) -
tricolore



OAKLEY'S BULLETPROOF
1993-04-18 (M) SHSB533692
(Champion USA)



INGA LE FOYER DU SETTER
1993-05-21 (F) 504623 - tricolore



MOONFLOWER DELLA LEONILDA
1995-04-28 (M) LOE 0824250 - lemon



MARYLAND DE LOS VITORONES (F) LOI



ORIO 1998-03-01 (M) LOE 1131016 -
tricolore



SWEET-SASSY DE LOS VITORONES (F) LOI



HIL DELLA BASSANA
1991-05-11 (M) LOI
ST446505 (CH IB,
Camp. Ripr.) - lemon



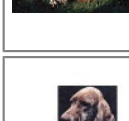
ESA DELLA BASSANA 1994-04-11
(F) LOI ST499768 - tricolore



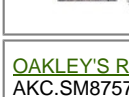
TEO DELLA BASSANA
1993-05-14 (M) LOI
ST489321 (Ch. Ital. Lav.) -
tricolore



DIRA DELLA BASSANA
1983-05-09 (F) LOI
ST284489 (CH ITAL B.CH
INT B) - BIANCO NERA



CLARIHO HOLIDAY SUNRISE (M)
AKC.SF265732
(Champion USA)



OAKLEY'S ROXANNE (F)
AKC.SM875726 (Champion USA)



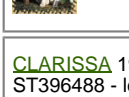
ELIA 1991-04-10 (M) LOI ST435417 -
tricolore



BETTY LE FOYER DU SETTER (F)
SHSB408813 (CH)



SUNNYBRAE'S HON BARNABY OFFELM 1988-07-09
(M) LOI ST500929 (Champion) -
lemon



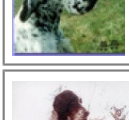
CLARISSA 1989-05-20 (F) LOI
ST396488 - lemon



BRIARSHAN'S ASH (M) (Champion)



SHANLEY FAIRWAY KIWII (F)



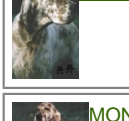
NENCINI'S TACCO
1995-03-01 (M) LOI
522528 (CH.ITAL) -
tricolore



DARMA 1996-05-02 (F) LOI 548944 -
lemon



TULIKETUM AAMU USVA (M)



MONTANA DE LOS VITORONES (F) LOI
(Champion)



