

XOL DE PLAYABARRI

2005-08-03 (M) LOE 1576824
Couleur : Fau.PBl.Env. (lemon)
[fiche affixe](#)



hosted by [setter-anglais.fr](#)

Père
EUSKAL ZAR
(M)
LOE 1203361

LERRY 1997-02-14 (M) LOI
ST555862 (Ch GQ, Ch IT) - bluebelton



PUPA 1993-09-04 (F) LOI ST488595 -
lemon



ARNO 1988-04-17 (M) LOI ST374735
(Ch. Int. Lav., Camp. Ripr., Ch. Ital. Lav.) -
lemon



PICENUM UNGA 1990-10-02 (F) LOI
ST430406 (CH GQ) - liver



RADENTIS GIAN 1983-01-02 (M) LOI
ST258470 (Ch. Ital. Lav., Ch. Int. Lav.,
Camp. Ripr.) - lemon



SWING DELLA VECCHIA IRLANDA
1984-08-01 (F) LOI ST295020 (Ch L) -
lemon



CRISMANI ATOS
1980-02-01 (M) LOI
ST208763 (Ch IT) -
liver

SWING DELLA VECCHIA IRLANDA
1984-08-01 (F) LOI ST295020 (Ch L) -
lemon



BIBO 1987-04-08
(M) LOI ST356972
(Ch. Int. Lav., Ch. Ital.
Lav., CH GQ) -
bluebelton

STAR 1987-01-16 (F) LOI ST346344 -
bluebelton








DECOR LOT
1978-09-22 (M) LOI
ST143178 (Ch IT, Ch
T, CH GQ) - bluebelton



**ARIET DI CASTEL SAN
GIORGIO** 1980-04-16 (F) LOI
ST215349 (Ch L Ch Int) - tricolore

VASCO 1979-05-29 (M) LOI
ST204310 - lemon

HALOA DELLA VECCHIA IRLANDA
1981-11-01 (F) LOI ST241483 - liver

<p>Mère <u>CAVA DE LA ARMUÑA</u> (F) LOE 1061525</p>	<p><u>RADENTIS D'ESPANA</u> 1995-05-22 (M) LOE 990823 (Ch IT B, Ch GQ) - lemon</p> 	<p><u>RADENTIS SBRANCO</u> 1991-07-01 (M) LOI ST448908 (CH IB, Ch. Int. Lav.) - lemon</p> 	<p><u>RADENTIS BORG</u> 1987-04-30 (M) LOI ST350267 (Ch. Int. Lav., CH GQ, Ch. Ital. Lav., Camp. Ripr.) - lemon</p> 	
	<p><u>MAGIS DORIANA</u> 1995-01-09 (F) LOE 818214 - liver</p> 	<p><u>RADENTIS ALA</u> 1994-03-15 (F) LOI ST496649 (Ch T) - lemon</p>	<p><u>RADENTIS BORG</u> 1987-04-30 (M) LOI ST350267 (Ch. Int. Lav., CH GQ, Ch. Ital. Lav., Camp. Ripr.) - lemon</p>	<p><u>RADENTIS RAISSA</u> 1991-05-30 (F) LOI ST448920 - lemon</p>
		<p><u>ADRIAS TIMOTY</u> 1994-02-25 (M) LOI ST496529 - tricolore</p>	<p><u>BIRBO DEGLI LUBERTI</u> 1990-11-20 (M) LOI ST433528 (CH IT T, CH INT) - liver</p>	<p><u>FRIDA DELLADERCHI</u> 1989-07-16 (F) LOI ST396998 - bluebelton</p>
		<p><u>DENNY</u> 1990-07-09 (F) LOI ST418861 - bluebelton</p>	<p><u>PALAZIENSIS ZITO</u> 1981-03-12 (M) LOI ST224491 - bluebelton</p> 	<p><u>STELLA</u> 1986-08-10 (F) LOI ST334016 - bluebelton</p>

Propriétaire : DUEVEI SETTER (667438342)

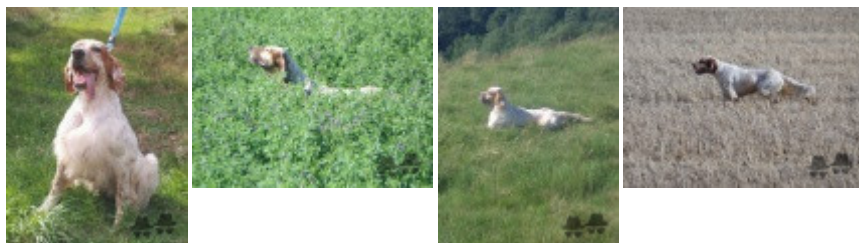
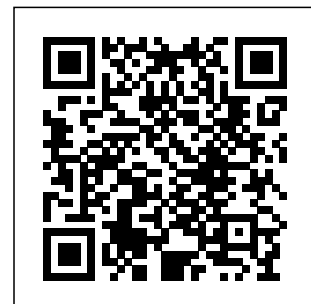
Tatouage : 110405G

Sang italien (estimation) : 100 %

Estimation des points au pédigrée : 25

Taux de consanguinité (estimation) : 4.9 %

RADENTIS GIAN (3 X 5,5,7,7) : 0.020790
DUN DEL MESCHIO (5,6,6,7,7,8,8 X 5,6,7,7,7,8,8,8,8) : 0.013245
DECOR LOI (4,6 X 5,6,6,6,6,7,8,8,8) : 0.012817
ORFEO DELLA TRAPPOLA (6 X 7,7) : 0.000488
VAVA DEL TIDONE (5,6,8,8 X 8) : 0.000427
TRUEBA DELLA FAGIANA (7,8,8 X 7,8,8,8) : 0.000244
VANNI DEL VO' (8 X 6) : 0.000122
BOBET DI SAN FAUSTINO (8 X 7,8,8) : 0.000122
LEM DEL RESEGONE (7 X 7) : 0.000122
BRILL 2 DEL ROVERE (7,8,8,8 X 7,8) : 0.000092
ARNO IL DI VAL D'IDICE (8 X 7,8) : 0.000092
ARTU (8 X 8,8) : 0.000061
DICH DI VAL D'IDICE (7 X 8,8) : 0.000061
DAMA 17 (7 X 8,8) : 0.000061
VIMON REVEL (7 X 8,8) : 0.000061
DERK (7 X 8) : 0.000061
ZAR 11 (8 X 8) : 0.000031
SARA 6 (8 X 8) : 0.000031



Note : les données ne sont pas garanties. Elles ont été entrées par les membres sans garantie d'exactitude.