

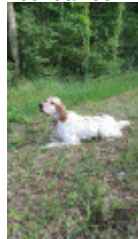
SIMBA DU CLOS DE CHAUZET

2021-07-30 (M) LOF 276618

Couleur : Noi. Mar.Fau. PBl.Env.Mou. (tricolore)

[fiche affixe](#)

[OAK D'ISYUP](#) 2018-04-20 (M) LOF
255288/43621 (TAN, TR) - lemon



Père
[PANACHE DE LA BAIE DES
ANGELOTS](#)
2019-11-27 (M)
LOF 264775/
- lemon



[FONGARO'S GIN](#) 2012-03-19 (F)
LOF 226379/43982 (TAN) - lemon



[HARPER DE BÉHIGO](#) 2012-01-12
(M) LOF 220125/37326 (TR CH-FTP
CH-FGT CH.T. TRGQ CHITF) - bluebelton



[ISATIS DU BIEFF JOLI dit ISY](#)
2013-06-24 (F) LOF 229240/45682
(CH GS, TR, TAN) - lemon



[FONGARO'S BALTHASAR](#)
2009-06-10 (M) LOI LO1073569 -
tricolore



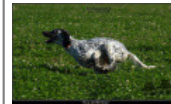
[FONGARO'S DUMA](#) 2008-03-29 (F)
LOI LO08104276 - bluebelton



[USSAN DU MAS
D'EYRAUD](#) 2003-10-21
(M) LOF 173466/28517
(CHGQ TRGQ CHITF) -
lemon



[EVA DE BÉHIGO](#)
2009-09-21 (F)
LOF 206713/40860
(TR) - bluebelton



[EDO DU SENTIER
DES LUTINS](#)
2009-10-23 (M) LOF
207320/34822 (TR
GQ, TR) - lemon



[DEMY DU BIEFF JOLI](#)
2008-05-19 (F) LOF
198708/38916 (TR, CH
GS, TR GQ) -
bluebelton



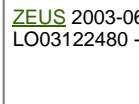
[NENCINI'S BOY](#)
2005-04-10 (M) LOI
LO05132310 - tricolore



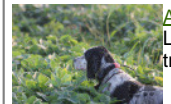
[ALICE](#) 2006-04-18 (F)
LOI LO0693681 -
tricolore








[ZEUS](#) 2003-06-14 (M) LOI
LO03122480 - bluebelton



[APT](#) 2006-04-18 (F)
LOI LO0693682 -
tricolore



	<p><u>ALMER DE LA GARDENIA</u> 2005-05-21 (M) LOF 182474/29741 (CHIB) - tricolore</p> 	<p><u>PALOS DU VAL BARREAU</u> 1999-06-01 (M) LOF 149526/24287 (TAN) - tricolore</p>	<p> <u>JUNIOR DES PETITES CHAUMES</u> 1994-08-17 (M) LOF 125571/18980 (TR) - tricolore</p>
			<p><u>GABIE DU VAL BARREAU</u> 1991-11-17 (F) LOF 111124/19030 (TR, CH T) - tricolore</p>
<p>Mère <u>MARLONE</u> 2016-05-16 (F) LOF 245135/52199 - lemon</p>		<p><u>STIKY DE LA GARDENIA</u> 2001-10-01 (F) LOF 162614/33127 - bluebelton</p>	<p><u>VÄI DI GRUMA</u> 1998-03-15 (M) LOF 146558/22292 - bluebelton</p>
			<p><u>PHIONA DE LA GARDENIA</u> 1999-10-25 (F) LOF 151969/28637 - lemon</p>
	<p><u>ENGIE DU CLOS DE CHAUZET</u> 2009-12-10 (F) LOF 208242/45947 - tricolore</p>	<p><u>SYLVER DU CLOS DE CHAUZET</u> 2001-03-20 (M) LOF 161944/25571 - lemon</p> 	<p> <u>OCKLAND DU PORT FILET</u> 1998-04-22 (M) LOF 142842/22374 - bluebelton</p>
			<p> <u>MARQUISE DU CLOS DE CHAUZET</u> 1996-04-28 (F) LOF 134369/24157 - lemon</p>
		<p><u>PERLE</u> 1999-07-04 (F) LOF 150017/33324 - tricolore</p>	<p><u>EDEN DU PLATEAU DES ABEILLES</u> 1989-04-30 (M) LOF 98962/13799 (TR) - tricolore</p>
			<p><u>FLORIANE DU MAS D'EYRAUD</u> 1990-06-09 (F) LOF 103909/17783 - bluebelton</p>

Tatouage : 302RVV
Sang italien (estimation) : 65 %
Estimation des points au pédigrée : 11



Note : les données ne sont pas garanties. Elles ont été entrées par les membres sans garantie d'exactitude.