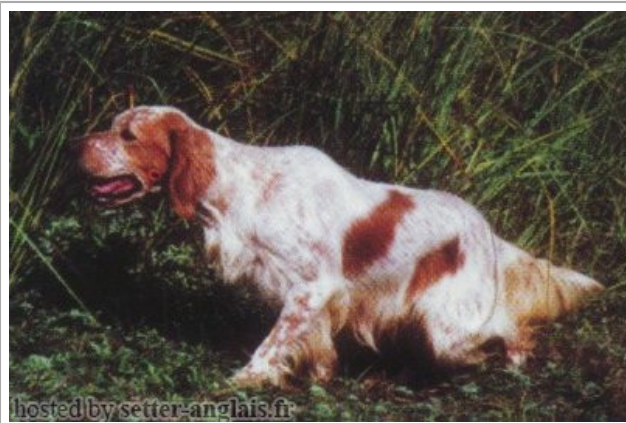










OUCHKA DE KERFEUIL

1998-02-20 (F) LOF 142140/28018
Couleur : Fau.PBl.Env. (lemon) / Titres : TR / Dyspl. : B
[fiche affixe](#)



<p>Père</p> <p>CONDOR DEL ZAGNIS 1992-07-18 (M) LOI ST474346 (C. Int. Lav. (Ch IT), Camp. Tr. (Ch GQ)) - lemon</p> 	<p>PIRSO 1988-05-31 (M) LOI ST368475 (Ch. Ital. Lav.) - lemon</p> 	<p>ZED 1984-05-12 (M) LOI ST290096 (Camp. Ripr.) - lemon</p> 	<p>KIM 1977-01-27 (M) LOI ST115218 - lemon</p>	
	<p>LITERNUM DARIA 1990-09-25 (F) LOI ST431796 - lemon</p>	<p>PENNY DEL DIANELLA 1981-07-21 (F) LOI ST238367 (Ch) - bluebelton</p>	<p>LEM DEL RESEGONE 1972-01-02 (M) LOI ST054069 (Camp. Ripr.) - bluebelton</p> 	<p>ALFA 1979-06-19 (F) LOI ST201618 - lemon</p>
<p>Mère</p> <p>GIPSY DE KERFEUIL 1991-07-14 (F) LOF 110048/18831 (TR) - lemon</p>	<p>ARNO 1988-04-17 (M) LOI ST374735 (Ch. Int. Lav., Camp. Ripr., Ch. Ital. Lav.) - lemon</p> 	<p>LEO 1986-06-14 (M) LOI ST338185 - lemon</p>	<p>FRANCINI'S LINDA 1979-02-13 (F) LOI ST146267 - tricolore</p>	
	<p>GEA 1986-04-07 (F) LOI ST325086 - bluebelton</p>	<p>FRANCINI'S LUCKY 1982-06-22 (M) LOI ST244725 - bluebelton</p>	<p>FRANCINI'S RAS 1982-10-26 (M) LOI ST254436 (Camp. Ripr.) - bluebelton</p> 	<p>FRANCINI'S DAISY 1983-03-06 (F) LOI ST263256 - bluebelton</p>
	<p>CRISMANI ATOS 1980-02-01 (M) LOI ST208763 (Ch IT) - liver</p> 	<p>FRANCINI'S DARIA 1983-04-28 (F) LOI ST266695 - lemon</p>	<p>CRISMANI MORGAN 1976-10-19 (M) LOI ST111852 - liver</p>	<p>FRANCINI'S DARIA 1983-04-28 (F) LOI ST266695 - lemon</p>
	<p>SWING DELLA VECCHIA IRLANDA 1984-08-01 (F) LOI ST295020 (Ch L) - lemon</p>	<p>CRISMANI OLGA 1978-08-10 (F) LOI ST139854 - bluebelton</p>	<p>VASCO 1979-05-29 (M) LOI ST204310 - lemon</p>	<p>HALOA DELLA VECCHIA IRLANDA 1981-11-01 (F) LOI ST241483 - liver</p>
	<p>DEM 1980-08-30 (M) LOI ST222808 (CH INT L RIP) - BIANCO-MACCHIA NERA OCCHIO DX-PI</p> 	<p>DUN DEL MESCHIO 1972-04-08 (M) LOI ST046247 (Ch GQ - Ch reproducteur)</p> <p>- bluebelton</p>	<p>LEDA 1976-04-13 (F) LOF 50709/05251 - tricolore</p>	<p>JOKER DU MONT BILY 1974-07-29 (M) LOF 48154/3617 (TR)</p>
	<p>UNE BELLE DE KERFEUIL 1983-06-10 (F) LOF 76724/11149 (TR) - lemon</p>	<p>LARA DE KERFEUIL 1975-09-07 (F) LOF 51068/5533 (TR)</p>		

Propriétaire : MENANT Victor
Recommandée
Cotation : 4
Sang italien (estimation) : 87 %
Estimation des points au pédigrée : 46



Note : les données ne sont pas garanties. Elles ont été entrées par les membres sans garantie d'exactitude.