

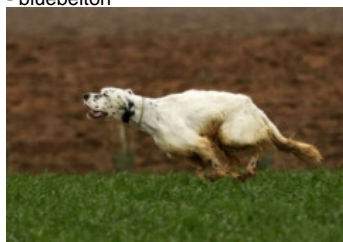
ELUR

2021-05-18 (F) LOE 2585391
Couleur : Blanco y negro (bluebelton)



hosted by setter-anglais.fr

Père
HOTAR DEL ALTO EUME
2011-07-21 (M)
LOE 2042079
(CH IT GQ)
- bluebelton



RENO DOZIERI 2006-07-27 (M) LOE
1883420 - bluebelton



BACO 2003-08-18 (M) LOI
LO03159103 - bluebelton



NAVAYO 1992-09-07
(M) LOI ST484678 -
bluebelton

ALBA 2001-06-23 (F) LOI
LO01161104 - bluebelton

KORAN DOZIERI 2004-07-16 (F) LOI
0541705 - bluebelton



DINO DOZIERI
1994-02-01 (M)
LOI ST512796
(Camp. Tr. (Ch GQ))
- tricolore

PIANIGIANI'S VIENNA 2001-04-18
(F) LOI LO01148728 - bluebelton

BETTI DE CUMBRAOS (F) LOE
1828517



CRACK 2004-08-12 (M) LOI
LO0519655 - tricolore



**ARGENTO DEL
BINARIO** 1999-08-16
(M) LOI LO0014433
(Camp-int trabajo Camp-rip)
- bluebelton





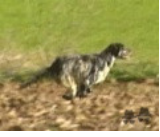



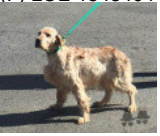
MAJA 1997-04-05 (F) LOI ST559224 -
tricolore

VENUS DE CUMBRAOS (F) LOE
1453641



RADENTIS D'ESPANA
1995-05-22 (M) LOE
990823 (Ch IT B, Ch GQ)
- lemon

LITZ 2001-03-18 (F) LOI LO01123976
- tricolore

<p>Mère</p> <p><u>ASIA</u> 2017-07-29 (F) LOE 2386716 - bluebelton</p> 	<p><u>EUSKITZE HAKINEN</u> 2008-05-12 (M) LOE 1816533 (TR.GB) - bluebelton</p> 	<p><u>PALAZIENSIS RAMBO</u> 1999-11-01 (M) LOI LO0060896 (Ch Wof/CH, IT T, ITF, Camp. Tr. (Ch GQ), CH(ES)T, CH(GB)T) - lemon</p> 	<p><u>PALAZIENSIS PEPE</u> 1997-07-03 (M) LOI LO99203608 - liver</p> 
	<p><u>NUMA DE CARBALLESA</u> (F) LOE 34455 - tricolore</p>	<p><u>EUSKITZE FIORENTINA</u> 2006-06-19 (F) LOE</p> 	<p><u>EUSKITZE RUGBY</u> 2000-06-02 (M) LOE 1205440 - bluebelton</p> 
	<p><u>NOLO DEL ZAGNIS</u> 2012-07-05 (M) LOI LO12129055 (CH GQ, CH IT, Camp. Ital. Lav. (CH T), Camp. Ripr.) - bluebelton</p> 	<p><u>GIAR D'ALERIA</u> 2008-11-15 (M) LOI LO09120198 (Camp. Soc., Ch. Ita. Lav.) - lemon</p> 	
	<p><u>DUNA DE CARBALLESA</u> 2005-05-21 (F) LOE 1543404 - lemon</p> 	<p><u>ALCE DEL ZAGNIS</u> 2009-10-27 (F) LOI LO1054031 - lemon</p>	<p><u>SCHUMANN DE CUMBRAOS</u> (M) LOE 1132627 - lemon</p>
			<p><u>TARA DE CUMBRAOS</u> (F) LOE 1453635</p>

Sang italien (estimation) : 99 %
Estimation des points au pédigrée : 19

Taux de consanguinité (estimation) : 1.9 %

RADENTIS D'ESPANA (4 X 5,5) : 0.009033
MARK DELLA BASSANA (6,6,7,7,7 X 6,8,8) : 0.002335
MARTIN DEL SASSOVIVO (5,6,6,8 X 7,7) : 0.002075
RADENTIS SBRANCO (5 X 5,6,6) : 0.002075
DECOR LOI (8,8,8,8 X 7,7,8,8,8,8) : 0.000793
RADENTIS BORG (6,6 X 6,7,7,7,7) : 0.000488
PICASSO DEL BINARIO (6 X 6) : 0.000488
RADENTIS GIAN (7,7,8 X 7,8,8,8,8,8) : 0.000336
EGON BUZAHZI (7 X 6) : 0.000244
FRANCINI'S RAS (7,8 X 8,8) : 0.000183
RADENTIS DIDO (7,8 X 7,8,8,8) : 0.000153
ULISSE DEL BINARIO (7,7 X 7) : 0.000122
LOPEZ DELLA BASSANA (8,8,8,8 X 8,8,8) : 0.000122
MINNY DEL BINARIO (7,7 X 7) : 0.000122
NEDA DEL DIANELLA (6 X 8) : 0.000122
GIP DELLA BASSANA (8 X 7,8) : 0.000092
DEM (7 X 8) : 0.000061
LEM DEL RESEGONE (7 X 8) : 0.000061
CALIGOLA DELLE OROBICHE (8,8,8 X 8) : 0.000031
EMO DELLA TRAPPOLA (8 X 7,8) : 0.000031
REDO DELLA BASSANA (8 X 8) : 0.000031



Note : les données ne sont pas garanties. Elles ont été entrées par les membres sans garantie d'exactitude.

