

**DEEP-BLUE DELLA CRUISMANY**

2008-04-23 (F) LOF 197305/39903  
Couleur : Noï. PBI.Env.Mou. (bluebelton)  
[fiche affiche](#)

Père  
**BOSTON DELLA CRUISMANY**  
2006-07-31 (M)  
LOF 189333/31257  
- bluebelton



**UTONY DELLA BASSANA dit TONY**  
2003-06-09 (M) LOF 179293/28507  
(Ch IB) - bluebelton

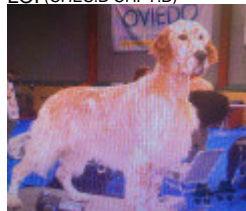


**OPALINE LE FOYER DU SETTER**  
1998-06-11 (F) LOF 147883/26340 -  
tricolore

Mère  
**LITTLE PRINCESS ZUASTI**  
2004-05-28 (F)  
LOF 189119/35316  
- lemon



**ONASSIS DE LOS VITORONES (M)**  
LOI (CHES.B CHPT.B)



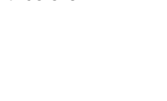
**MIDNIGHTSUMMER DE LOS VITORONES (F) LOI (CHES.B)**



**BOSS DELLA BASSANA** 1998-07-07  
(M) LOI LO9937795 (CH ITAL BOB) -  
bluebelton



**GEM DELLA BASSANA** 2000-02-22  
(F) LOI LO0158644 (CH IB, Camp. Ripr.) -  
tricolore



**OAKLEY'S BULLETPROOF**  
1993-04-18 (M) SHSB533692  
(Champion USA)



**INGA LE FOYER DU SETTER**  
1993-05-21 (F) 504623 - tricolore



**MOONFLOWER DELLA LEONILDA**  
1995-04-28 (M) LOE 0824250 - lemon



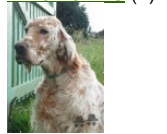
**MARYLAND DE LOS VITORONES (F) LOI**



**ORIO** 1998-03-01 (M) LOE 1131016 -  
tricolore



**SWEET-SASSY DE LOS VITORONES (F) LOI**



**HIL DELLA BASSANA**  
1991-05-11 (M) LOI  
ST446505 (CH IB,  
Camp. Ripr.) - lemon



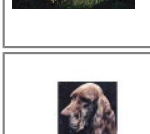
**ESA DELLA BASSANA** 1994-04-11  
(F) LOI ST499768 - tricolore



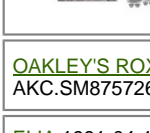
**TEO DELLA BASSANA**  
1993-05-14 (M) LOI  
ST489321 (Ch. Ital. Lav.) -  
tricolore



**DIRA DELLA BASSANA**  
1983-05-09 (F) LOI  
ST284489 (CH ITAL B.CH  
INT B) - BIANCO NERA



**CLARIHO HOLIDAY SUNRISE (M)**  
AKC.SF265732  
(Champion USA)



**OAKLEY'S ROXANNE (F)**  
AKC.SM875726 (Champion USA)

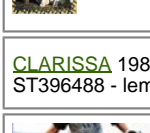
**ELIA** 1991-04-10 (M) LOI ST435417 -  
tricolore



**BETTY LE FOYER DU SETTER (F)**  
SHSB408813 (CH)



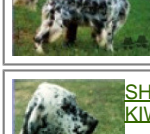
**SUNNYBRAE'S HON BARNABY OFFELM** 1988-07-09  
(M) LOI ST500929 (Champion) -  
lemon



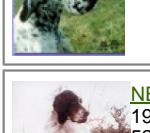
**CLARISSA** 1989-05-20 (F) LOI  
ST396488 - lemon



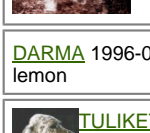
**BRIARSHAN'S ASH (M) (Champion)**



**SHANLEY FAIRWAY KIWII (F)**



**NENCINI'S TACCO**  
1995-03-01 (M) LOI  
522528 (CH.ITAL) -  
tricolore



**DARMA** 1996-05-02 (F) LOI 548944 -  
lemon



**TULIKETUM AAMU USVA (M)**



**MONTANA DE LOS VITORONES (F) LOI**  
(Champion)



Eleveur : MELLE SEBASTIEN  
Cotation : 1  
Tatouage : 2GAF385  
Sang italien (estimation) : 60 %  
Estimation des points au pédigrée : 18

## Taux de consanguinité (estimation) : 1.8 %

LOPEZ DELLA BASSANA (6,6,6,7,7,7,7,7,7,8,8,8,8,8,8,8,8,8 X 8,8,8,8,8,8,8,8) : 0.006592  
MARK DELLA BASSANA (5,6,6 X 6,8,8,8) : 0.003433  
LAICA DELLA BASSANA (5 X 7,7,7,8) : 0.001869  
INGLIS DELLADERCHI (5 X 7,7,7) : 0.001556  
SEAFIELD'S HOLIDAY SPIRIT (5,6 X 6) : 0.001465  
CIBA DELLA BASSANA (6,6,7,7,7 X 7,7) : 0.001221  
REDO DELLA BASSANA (5,6,7,7,8,8,8 X 8) : 0.000488  
DIC DELLA BASSANA (6,7 X 7) : 0.000366  
CLARIHO MAJOR OF MEADOWSET (7,8 X 7,8,8) : 0.000275  
ITRI DELLA BASSANA (6,6,7,7 X 7) : 0.000244  
MIRCA DELLA BASSANA (6,7,7,8 X 8) : 0.000183  
DIDA DELLA BASSANA (6 X 8) : 0.000122  
ADU DEL MANGIA (8 X 7) : 0.000061

Note : les données ne sont pas garanties. Elles ont été entrées par les membres sans garantie d'exactitude.

