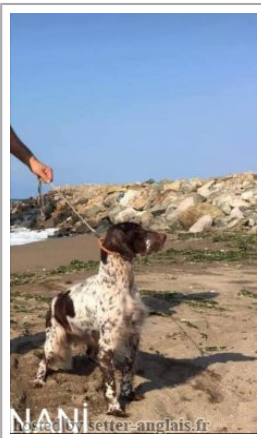


**GINTAEDOV NANI**

(F) LOI KIF-GSB-ES-0689-  
Couleur : Liver  
[fiche affixe](#)



Père  
**EROS DI LORO PICENO**  
2006-09-15 (M)  
LOI LO0743490  
(Camp. Tr. (Ch GQ))  
- liver



**BIG JIM** 2000-12-01 (M) LOI  
LO0188207 (Ch GQ, Ch. Int. Lav., Camp.  
Ripr., Ch. Ital. Lav.) - liver



**TANGA DI LORO PICENO**  
1999-09-25 (F) LOI LO0049017 (Camp.  
Tr. (Ch GQ)) - bluebelton



**LERRY** 1997-02-14 (M) LOI  
ST555862 (Ch GQ, Ch IT) - bluebelton



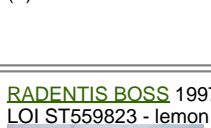
**RADENTIS TANGA** 1998-09-15 (F)  
LOI LO9958147 - lemon



**FRANCINI'S JEFF** 1993-04-03 (M)  
LOI ST479317 (Ch. Ital. Lav., Ch. Int. Lav.,  
Camp. Ripr.) - bluebelton



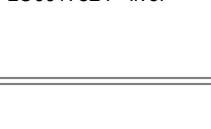
**DARA DI LORO PICENO** 1991-02-18  
(F) LOI ST449335 - liver



**RADENTIS BOSS** 1997-01-13 (M)  
LOI ST559823 - lemon



**RADENTIS NADA** 1999-07-10 (F) LOI  
LO0017824 - liver



**HIV DE PLAYABARRI** (M) LOE  
539995

**JUMA DE URTXUBIGANE** (F) LOE  
1061009



**ARNO** 1988-04-17  
(M) LOI ST374735  
(Ch. Int. Lav., Camp.  
Ripr., Ch. Ital. Lav.) -  
lemon



**PICENUM UNGA**  
1990-10-02 (F) LOI  
ST430406 (Ch GQ) -  
liver



**RADENTIS  
SBRANCO**  
1991-07-01 (M) LOI  
ST448908 (CH IB, Ch.  
Int. Lav.) - lemon

**BESSY** 1995-02-10 (F) LOI ST515746  
- lemon



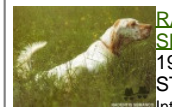
**FRANCINI'S LUCA**  
1989-07-08 (M) LOI  
ST404483 (Ch. Ital.  
Lav., CH GQ, Ch. Int.  
Lav., Camp. Ripr.) -

tricolore

**FRANCINI'S SALLY** 1986-01-19 (F)  
LOI ST325298 (Camp. Ripr.) - bluebelton

**ROYAL FERRON** 1989-12-15 (M) LOI  
ST408816 - bluebelton

**ZINGARA DI LORO PICENO**  
1986-11-01 (F) LOI ST359012 -  
bluebelton



**RADENTIS  
SBRANCO**  
1991-07-01 (M) LOI  
ST448908 (CH IB, Ch.  
Int. Lav.) - lemon

**ODE DEL SOLE** 1993-09-10 (F) LOI  
ST490145 - liver



**RADENTIS  
SBRANCO**  
1991-07-01 (M) LOI  
ST448908 (CH IB, Ch.  
Int. Lav.) - lemon

**MAFALDA** 1994-07-15 (F) LOI  
ST508805 - bluebelton

**BERE** 1990-10-04 (M) LOI ST429298  
- lemon

**FURIA DEL VALLE DE MENA** (F)  
LOE 0476811

**DUM II DE URTXUBIGANE** (M) LOE

**CUMBA DE URTXUBIGANE** (F) LOE

Mère  
**SARA DE URTXUBIGANE dit INDIA**  
2005-03-01 (F)  
LOE 1519311  
(P.A.N.)  
- liver



**RADENTIS CLIO** 2003-05-20 (M) LOE  
1454658 (Tr.GB(E.06)) - liver

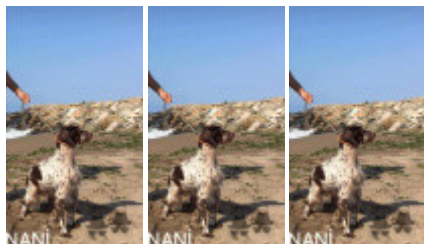


**LUSI DE URTXUBIGANE** (F) LOE  
1188659

Estimation des points au pédigrée : 30

## Taux de consanguinité (estimation) : 3.6 %

RADENTIS SBRANCO (4 X 4,4) : 0.016602  
DECOR LOI (5,6,7,7,7,7,7 X 7,7,7,7,7,7,7) : 0.008301  
DUN DEL MESCHIO (6,7,7,7,8,8,8,8 X 7,7,7,7,8,8,8,8,8) : 0.005951  
RADENTIS GIAN (6 X 6,6,6,6) : 0.000977  
ROVAL VIENNA (5 X 6) : 0.000977  
DEM (5 X 6) : 0.000977  
LEM DEL RESEGONE (6,7,7,8 X 7,8) : 0.000824  
MERA DELL ORSONE (6 X 7,8) : 0.000366  
MUR (7,8 X 7,8) : 0.000275  
DIK DELLA MARCIOLA (6 X 7) : 0.000244  
RUDY DEL DIANELLA (5 X 8) : 0.000244  
FRANCINI'S RAS (5 X 8) : 0.000244  
OLAF DEL TRE PONTI (6 X 7,8) : 0.000122  
AMBRA DEL DIANELLA (8 X 8,8) : 0.000061  
CRISMANI DIK (7,8 X 8) : 0.000031  
DERK (8 X 8) : 0.000031



Note : les données ne sont pas garanties. Elles ont été entrées par les membres sans garantie d'exactitude.