

**DILL-SPIN JACKO**

(M) BEK 041054  
Couleur : Noi.PBl.Env (bluebelton)  
[fiche affixe](#)



Père  
**DILL-SPIN GERO**  
(M)  
BEK 026318

**HARRIS DE LA PLUME DU PÉVÈLE**  
1992-03-26 (M) BEK4700 - bluebelton



**ROVAL SLY** 1987-04-22 (M) LOI  
ST351049 - bluebelton

**EPHY DES SEPT PROVINCES**  
1989-10-25 (F) LOF 101971/17258 -  
bluebelton

**DEM** 1980-08-30 (M) LOI ST222808  
(CH INT L RIP) - BIANCO-MACCHIA  
NERA OCCHIO DX-PI

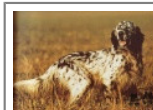


**FRANCINI'S LORI** 1980-07-21 (F) LOI  
ST219787 - BIANCO NERA  
PUNTEGGIATA



**DECOR LOT**  
1978-09-22 (M) LOI  
ST143178 (Ch IT, Ch  
T, CH GQ) - bluebelton

**SILA** 1979-09-02 (F) LOI ST205622 -  
lemon



**BOI** 1984-02-20 (M)  
LOF 96481/12378  
(TR) - bluebelton

**BERDINE DES SEPT PROVINCES**  
1986-05-01 (F) LOF 86737/14070  
(Trialer) - lemon



**DUN DEL  
MESCHIO**  
1972-04-08 (M)  
LOI ST046247 (Ch  
GQ - Ch reproducteur)








- bluebelton

**LEDA** 1976-04-13 (F) LOF  
50709/05251 - tricolore



**MAGIS GIM**  
1973-07-20 (M)  
LOI ST063170  
(Ch L Ch INT) - n.d.

**FRANCINI'S VANITY** 1976-08-01 (F)  
LOI ST104417 - bluebelton

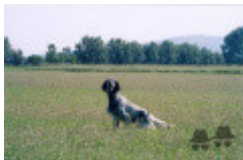
Père <b>FRANCINI'S FATA</b> 1969-03-12 (M) LOI 020353 - bluebelton	<b>FRANCINI'S JEFF</b> 1993-04-03 (M) LOI ST479317 (Ch. Ital. Lav., Ch. Int. Lav., Camp. Ripr.) - bluebelton 	<b>FRANCINI'S LUCA</b> 1989-07-08 (M) LOI ST404483 (Ch. Ital. Lav., CH GQ, Ch. Int. Lav., Camp. Ripr.) - tricolore 	<b>DEM</b> 1980-08-30 (M) LOI ST222808 (CH INT L RIP) - BIANCO-MACCHIA NERA OCCHIO DX-PI 	
	<b>FRANCINI'S SELVA</b> 1992-04-01 (F) LOI ST461180 - bluebelton	<b>FRANCINI'S SALLY</b> 1986-01-19 (F) LOI ST325298 (Camp. Ripr.) - bluebelton	<b>FRANCINI'S LORI</b> 1980-07-21 (F) LOI ST219787 - BIANCO NERA PUNTEGGIATA 	<b>FRANCINI'S RAS</b> 1982-10-26 (M) LOI ST254436 (Camp. Ripr.) - bluebelton
		<b>DEM</b> 1980-08-30 (M) LOI ST222808 (CH INT L RIP) - BIANCO-MACCHIA NERA OCCHIO DX-PI 	<b>RUDY DEL DIANELLA</b> 1981-09-16 (F) LOI ST239145 - bluebelton	<b>DUN DEL          MESCHIO</b> 1972-04-08 (M) LOI ST046247 (Ch GQ - Ch reproducteur) - bluebelton 
		<b>FRANCINI'S LORI</b> 1980-07-21 (F) LOI ST219787 - BIANCO NERA PUNTEGGIATA	<b>LEDA</b> 1976-04-13 (F) LOF 50709/05251 - tricolore 	<b>MAGIS GIM</b> 1973-07-20 (M) LOI ST063170 (Ch L Ch INT) - n.d.
			<b>FRANCINI'S VANITY</b> 1976-08-01 (F) LOI ST104417 - bluebelton	

Sang italien (estimation) : 96 %

Estimation des points au pédigrée : 13

## Taux de consanguinité (estimation) : 17.8 %

**FRANCINI'S SELVA** (2 X 2) : 0.125427  
**FRANCINI'S LORI** (3 X 3,4) : 0.015656  
**DEM** (3 X 3,4) : 0.015656  
**DUN DEL MESCHIO** (4,5,6 X 4,5) : 0.008926  
**LEM DEL RESEGONE** (5,6 X 5,5,6,6) : 0.004883  
**FRANCINI'S VANITY** (4 X 4,5,5) : 0.003967  
**TRUEBA DELLA FAGIANA** (6,7,8 X 6,7,7) : 0.000427  
**BRILL 2 DEL ROVERE** (6,7,8 X 6,7,8,8) : 0.000427  
**ZINGARA** (5,8 X 5,6) : 0.000366  
**VAVA DEL TIDONE** (7,8,8,8 X 7,8,8,8,8,8) : 0.000366  
**ARNO II DI VAL D'IDICE** (7,8,8 X 7) : 0.000244  
**MISS 3 DELLE VALLATE** (7,7 X 7,8,8) : 0.000244  
**CRISMANI DIK** (7 X 6) : 0.000244  
**VIMON REVEL** (7,7 X 7,8,8) : 0.000244  
**BOBET DI SAN FAUSTINO** (7,7 X 7,8) : 0.000183  
**ALMAR DARMA** (6,7,8,8 X 6,7) : 0.000183  
**BONA DEL ROVERE** (7,8 X 7,8,8) : 0.000092  
**ORSONE DELL'ORSONE** (7,8 X 7,8,8) : 0.000092  
**SARA 6** (8,8 X 8) : 0.000031  
**ZAR 11** (8,8 X 8) : 0.000031  
**ALTNAHARRA BROOM** (8,8,8 X 8,8) : 0.000031



Note : les données ne sont pas garanties. Elles ont été entrées par les membres sans garantie d'exactitude.

