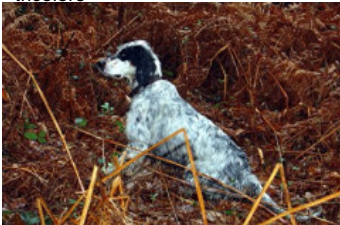








HURKA DU LONG BEC D'ENCHANET

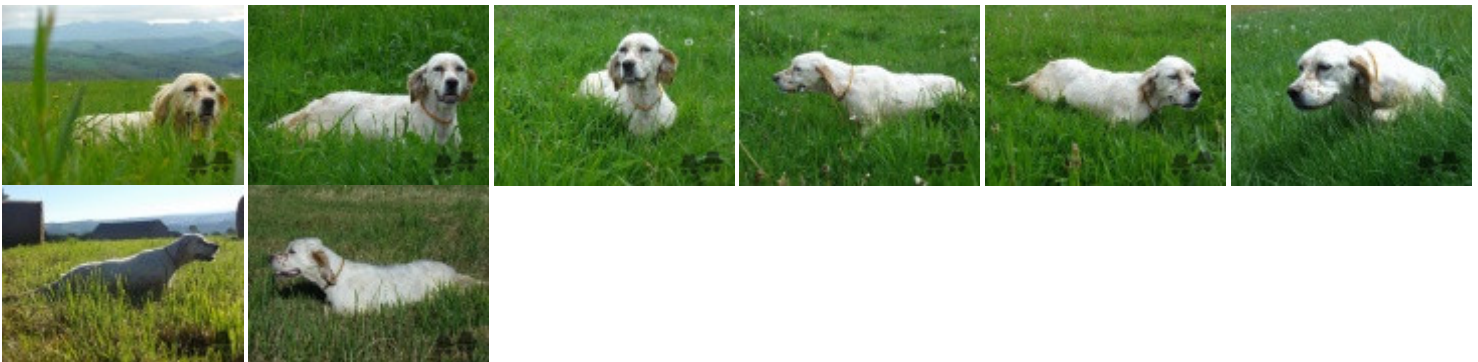
2012-10-14 (F) LOF 225158
 Couleur : Fau.PBl.Env. (lemon) / Titres : TAN / Dyspl. : A
[fiche affixe](#)



<p>Père BRANDO DE L'ECHO DE LA FORET 2006-05-08 (M) LOF 186807/30645 (CH.T. -VVOF/FTA -CHTGS -CHP -CHA -TRGQ -TR) - lemon</p> 	<p>PALAZIENSIS RAMBO 1999-11-01 (M) LOI LO0060896 (Ch W0F/ICH, IT T, ITF, Camp. Tr. (Ch GQ), CH(ES)T, CH(GB)T) - lemon</p> 	<p>PALAZIENSIS PEPE 1997-07-03 (M) LOI LO99203608 - liver</p> 	<p>GUERCINO DELLA FRATTONA 1996-05-07 (M) LOI ST554737 - bluebelton</p>
	<p>SINE DE L'ECHO DE LA FORET 2001-05-13 (F) LOF 160977/30671 (TR) - lemon</p> 	<p>LADY 1994-04-30 (F) LOI ST499069 (Ch A) - bluebelton</p>	<p>IRAK DEL LADERCHI 1990-01-10 (M) LOI ST411384 - tricolore</p>
	<p>RADENTIS D'ESPANA 1995-05-22 (M) LOE 990823 (Ch IT B, Ch GQ) - lemon</p> 	<p>RADENTIS SBRANCO 1991-07-01 (M) LOI ST448908 (CH IB, Ch. Int. Lav.) - lemon</p>	<p>LOLA 1988-05-03 (F) LOI ST366110 - bluebelton</p>
	<p>NIRTIE DE L'ECHO DE LA FORET 1997-06-23 (F) LOF 138882/25781 (CHP CHA TR) - tricolore</p> 	<p>RADENTIS ALA 1994-03-15 (F) LOI ST496649 (Ch T) - lemon</p>	<p>HYPHER DE L'ECHO DE LA FORET 1992-01-01 (M) LOF 111469/16750 (CH T, CH A, TR GQ) - lemon</p>
		<p>IDOLE 1993-12-02 (F) LOF 120952/21094 - bluebelton</p>	

<p>Mère <u>BELLE DU LONG BEC D'ENCHANET</u> 2006-04-17 (F) LOF 185637/35683 (TR) - tricolore</p> 	<p><u>SELECT DU SENTIER DES LUTINS</u> 2001-06-23 (M) LOF 159944/26181 (TR, CH A) - tricolore</p> 	<p><u>NASH DU POULIT SAN DANIS</u> 1997-01-01 (M) LOF 136341/25088 (TR CHP CH.T. CHITF CHP CHT, CHIT, CH.T. CHITF / CHBE, B CHES, B) - bluebelton</p> 	<p><u>JORDY DE CODORNIS</u> 1994-01-05 (M) LOF 121290/18225 (TR) - bluebelton</p>
	<p><u>UDECE DU LONG BEC D'ENCHANET</u> 2003-05-20 (F) LOF 170403/33440 - lemon</p>	<p><u>LIZA DU SENTIER DES LUTINS</u> 1995-07-19 (F) LOF 128401/22824 (CH P) - tricolore</p> 	<p><u>HUSSARD DU VAL D'AUTAN</u> 1992-01-01 (M) LOF 112047/16229 (Ch T P- T GQ) - tricolore</p>
		<p><u>FRANCINI'S GOGA</u> 1995-05-29 (M) LOF 136151/20222 (TR CHA CHP CHITF CH.T. VOF/FTA VOF/FTP) - bluebelton</p> 	<p><u>FRANCINI'S JEFF</u> 1993-04-03 (M) LOI ST479317 (Ch. Ital. Lav., Ch. Int. Lav., Camp. Ripr.) - bluebelton</p> 
		<p><u>RITA DU PIC D'AUBRAQUET</u> 2000-03-25 (F) LOF 153023/28445 (TAN) - tricolore</p> 	<p><u>FRANCINI'S PEGGY</u> 1992-07-12 (F) LOI ST472715 (Ch. Ital. Lav.) - tricolore</p>
			<p><u>CALYF DU MAS D'EYRAUD</u> 1987-11-15 (M) LOF 93565/12705 (TR) - bluebelton</p>
			<p><u>LINDA DU BANDOJ DE COUFFINS</u> 1995-07-22 (F) LOF 130375/23595 (TAN) - lemon</p>

Propriétaire : CAPONE Christophe
1/2 Finaliste CFN 2015
Tatouage : 2HDB402
Sang italien (estimation) : 72 %
Estimation des points au pédigrée : 40



Note : les données ne sont pas garanties. Elles ont été entrées par les membres sans garantie d'exactitude.