







AMBA DE LAVERANS

2006-10-15 (M) HP01703/12

Couleur : Lemon

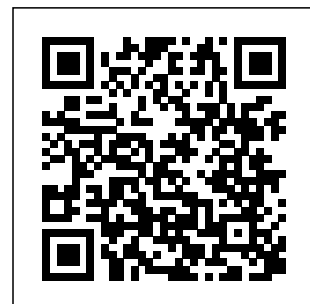
[fiche affixe](#)

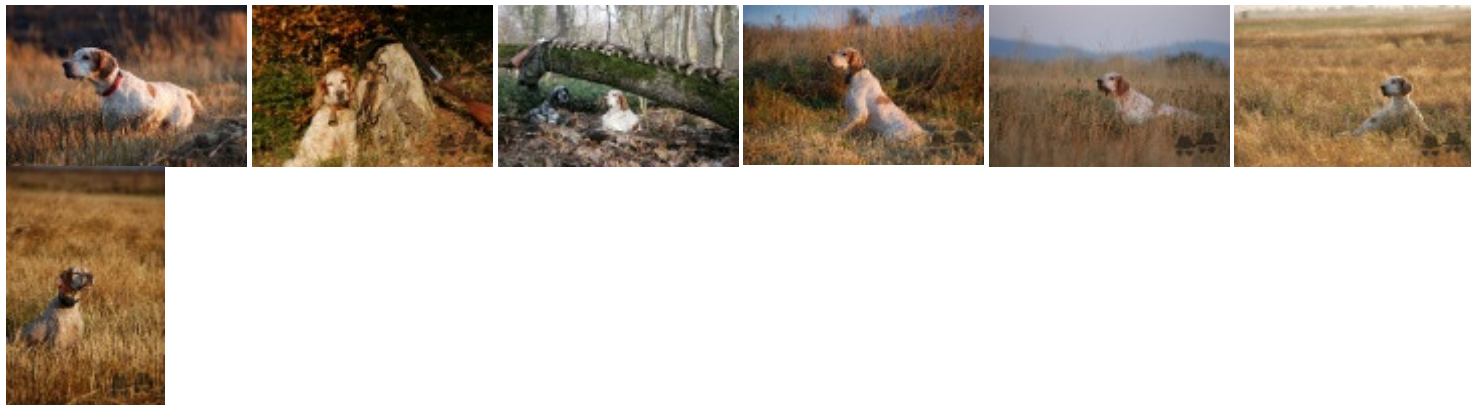
| | | | | |
|--|---|--|---|---|
| Père MARCOS 1995-05-20 (M) LOI ST524952 - lemon | ARNO 1988-04-17 (M) LOI ST374735 (Ch. Int. Lav., Camp. Ripr., Ch. Ital. Lav.) - lemon  | CRISMANI ATOS 1980-02-01 (M) LOI ST208763 (Ch IT) - liver  | CRISMANI MORGAN 1976-10-19 (M) LOI ST111852 - liver | |
| | INDIRA 1990-06-01 (F) LOI ST423625 (Ch IT) - lemon  | SWING DELLA VECCHIA IRLANDA 1984-08-01 (F) LOI ST295020 (Ch L) - lemon | VASCO 1979-05-29 (M) LOI ST204310 - lemon | CRISMANI OLGA 1978-08-10 (F) LOI ST139854 - bluebelton |
| Mère VIKI (F) UNKNOWN - bluebelton | inconnu | RADENTIS GIAN 1983-01-02 (M) LOI ST258470 (Ch. Ital. Lav., Ch. Int. Lav., Camp. Ripr.) - lemon  | HALOA DELLA VECCHIA IRLANDA 1981-11-01 (F) LOI ST241483 - liver | |
| | | BETTY 1988-03-03 (F) LOI ST364831 (Ch T Ital) - lemon | DECOR LOT 1978-09-22 (M) LOI ST143178 (Ch IT, Ch T, CH GQ) - bluebelton  | |
| | inconnu | ARIET DI CASTEL SAN GIORGIO 1980-04-16 (F) LOI ST215349 (Ch L Ch Int) - tricolore  | ROYAL FRISBI 1986-10-30 (M) LOI ST342243 - lemon | GIORGIO 1980-04-16 (F) LOI ST215349 (Ch L Ch Int) - tricolore |
| | | inconnu | DANA 1983-09-18 (F) LOI ST273243 - bluebelton | inconnu |
| | | inconnu | inconnu | inconnu |
| | | inconnu | inconnu | inconnu |

[[Lien...](#)] / Propriétaire : Istilian Marinkov (BULGARIA,SOFIA, izitop@abv.bg)

Sang italien (estimation) : 50 %

Estimation des points au pédigrée : 16





Note : les données ne sont pas garanties. Elles ont été entrées par les membres sans garantie d'exactitude.