

BODY

(M) TR-ES-6483
Couleur : Fau.PBl.Env. (lemon)



Père
ARES1 D? SETTER74
(M)
TR-ES-77
- bluebelton



EKTOR DIGAL 2012-11-04 (M)
JR704304 - bluebelton



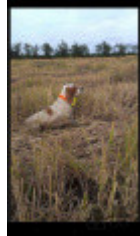
TESH D? SETTER74 (F) TR-ES-74 - lemon



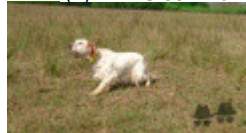
Mère
?ND?A
(F)
TR-ES-1245
- lemon



SKAY (M) TR-ES-764 - Orange Belton



?NKA (F) TR-ES-354 - lemon



AZOR DIGAL (M) KIF-704053 - liver



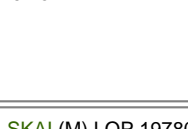
AMOA DIGAL (F) 7373663 - tricolore



ZITO D? SETTER74 (M) TR-ES-97 - Orange Belton



CINA D? SETTER74 (F) TR-ES-96 - lemon



SKAI (M) LOP 197801 - bluebelton



CAMILLA DE LOS VITORONES (F)
LOE 679672 - lemon



inconnu

inconnu

DODO DEL BINARIO (M) LOI
20090931 - tricolore



RIMERI DIGAL (F)
JR703220ES - bluebelton



**MONDO OD
KARAOTOKA** (M)
HR14537

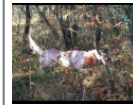


REMA DIGAL (F) 6366363

KALI (M) TR-ES-99 - lemon



?NNA (F) KIF-ES-98 - lemon



LILADIUM RICO
2009-08-10 (M) BEK
89404 - White
Orange



EL?A D? SETTER74
2010-09-01 (F) TR-ES-12535 - Liver



CAMILLO 2001-04-02 (M) LOI
LO01157525 - bluebelton

LEA (F) 126340

NENCINI'S TESIO
1999-01-02 (M) LOE
1290512 - bluebelton



ZARIA DE LOS VITORONES (F) LOE
765234

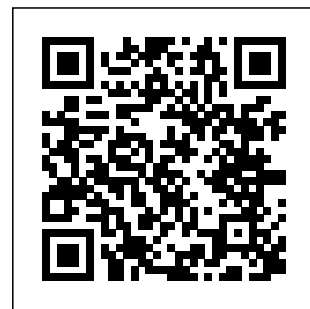
inconnu

inconnu

inconnu

inconnu

Sang italien (estimation) : 67 %



Note : les données ne sont pas garanties. Elles ont été entrées par les membres sans garantie d'exactitude.