

HIRO DE BACEÑUELA

2011-07-18 (M) LOE 2040146
Couleur : Blanco/naranja (lemon)
[fiche affixe](#)



Père
MAMBO DE PIEDRALLADA
2009-04-04 (M)
LOE 1875801
(Tr. G.B., Tr. Primavera)
- liver

**ROONEY DEL SARGIADAE**

2004-06-11 (M) LOI LO04120540 (Ch GQ, Camp. Ital. Assol., Camp. Ital. Lav., Camp. Int. Lav.) - bluebelton

**KOTA DE PIEDRALLADA** 2007-06-25
(F) LOE 1712756 - lemon

BIG JIM 2000-12-01 (M) LOI
LO0188207 (Ch GQ, Ch. Int. Lav., Camp. Ripr., Ch. Ital. Lav.) - liver



CASSIA 2002-03-19 (F) LOI
LO02125347 - lemon



RADENTIS D'ESPANA 1995-05-22
(M) LOE 990823 (Ch IT B, Ch GQ) - lemon



ITA DE PIEDRALLADA 2005-09-22
(F) LOE 1559392 (PAN) - lemon



LERRY 1997-02-14 (M)
LOI ST555862 (Ch GQ, Ch IT) - bluebelton



RADENTIS TANGA
1998-09-15 (F) LOI
LO9958147 - lemon



FIERO 1996-08-10
(M) LOI ST551356
(CHGQ, Ch ITF, Ch IB, Ch ITT) - lemon

CASSIA 1994-06-19 (F) LOI
ST507935 - lemon

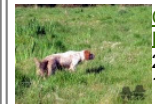


RADENTIS SBRANCO
1991-07-01 (M) LOI
ST448908 (Ch IB, Ch. Int. Lav.) - lemon






RADENTIS ALA 1994-03-15 (F) LOI
ST496649 (Ch T) - lemon



PALAZIENSIS RAMBO
1999-11-01 (M) LOI
LO0060896 (Ch W0F/CH, IT T,
ITF, Camp. Tr. (Ch GQ), CH(ES)T,
CH(GB)T) - lemon



GAMBA DE PIEDRALLADA
2003-05-25 (F) LOE
1413416 (PAN) - lemon

<p>Mère</p> <p><u>IF DE SOSOBAL</u> (F) LOE 1833123 - lemon</p> 	<p><u>TRIKI DE L'EL BALDIO</u> (M) LOE 1314003 (TrGB(E.05)) - lemon</p> 	<p><u>RADENTIS D'ESPANA</u> 1995-05-22 (M) LOE 990823 (Ch IT B, Ch GQ) - lemon</p> 	<p><u>RADENTIS SBRANCO</u> 1991-07-01 (M) LOI ST448908 (Ch IB, Ch. Int. Lav.) - lemon</p>
	<p><u>GASH DE SOSOBAL</u> (F) LOE 1275984</p>	<p><u>ROSY</u> (F) LOE 1245110</p>	<p><u>RADENTIS ALA</u> 1994-03-15 (F) LOI ST496649 (Ch T) - lemon</p>
	<p><u>KEN</u> 1998-05-10 (M) LOE 1167659 (Champion, Trialer GQ) - lemon</p> 	<p><u>ARNQ</u> 1988-04-17 (M) LOI ST374735 (Ch. Int. Lav., Camp. Ripr., Ch. Ital. Lav.) - lemon</p>	<p><u>KIRA</u> 1994-09-15 (F) LOI ST509809 - lemon</p>
	<p><u>GLENDA</u> (F) LOE 693903</p>	<p><u>FAY DE PLAYABARRI</u> 1990-03-06 (M) LOE 428385 (Ch GQ IT) - bluebelton</p> 	<p><u>FARA DEL VALLE DE MENA</u> (F) LOE 476798</p>

Propriétaire : Carlos Ibáñez Navarro (carlos_600_600@hotmail.com)

Sang italien (estimation) : 92 %

Estimation des points au pédigrée : 24

Taux de consanguinité (estimation) : 7.9 %

RADENTIS D'ESPANA (3,6 X 3) : 0.041473

ARNQ (5,5,6,6 X 4) : 0.011719

RADENTIS GIAN (6,6,6,6,7,8,8,8 X 5,6,6,6,8,8) : 0.010559

DECOR LOT (7,7,7,7,7,8,8,8,8,8,8 X 6,6,7,7,7,7,8) : 0.005768

RADENTIS SBRANCO (4,5,7 X 4) : 0.004150

ROVAL VIENNA (6,6 X 5) : 0.001953

DUN DEL MESCHIO (8,8,8,8,8 X 7,7,8,8,8,8,8,8,8) : 0.001526

RADENTIS BORG (5,5,6,8,8 X 5,5) : 0.000977

HALOA DELLA VECCHIA IRLANDA (7,7,8,8,8 X 6) : 0.000122

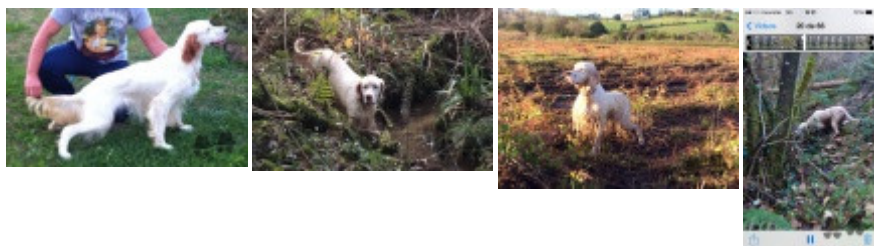
BERNA (7,7,8 X 6) : 0.000122

RADENTIS DIDO (6,7,7 X 6,7) : 0.000122

OLAF DEL TRE PONTI (7,7 X 6,8) : 0.000122

LEM DEL RESEGONE (7 X 8,8) : 0.000122

ORFEO DELLA TRAPPOLA (8 X 8,8) : 0.000061



Note : les données ne sont pas garanties. Elles ont été entrées par les membres sans garantie d'exactitude.