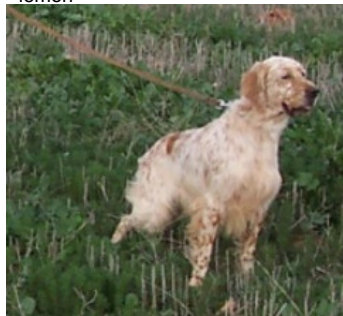


DENDABERRI PRESLEY

2013-05-02 (M) LOE
Couleur : blanco naranja (lemon)
[fiche affixe](#)



Père
GIBELTARIK CHESTER
2001-11-05 (M)
LOE KGC02202
(Ch GQ)
- lemon



Mère
DENDABERRILEMA
2009-12-17 (F)
LOE 1918648
(CH IT, CH(I)T)
- lemon



FIERO 1996-08-10 (M) LOI ST551356
(CHGQ, Ch ITF, Ch IB, Ch ITT) - lemon



RADENTIS ERICA 1995-05-25 (F)
LOI ST531494 ((CH(I)B)) - lemon



DENDABERRI JAI 2007-03-12 (M)
LOE 1704343 (TrCP, TrPR, TrBC) -
bluebelton



SIVA 2001-05-28 (F) LOE 1252301 -
lemon

ARNO 1988-04-17 (M) LOI ST374735
(Ch. Int. Lav., Camp. Ripr., Ch. Ital. Lav.) -
lemon



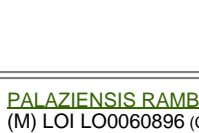
INDIRA 1990-06-01 (F) LOI ST423625
(Ch IT) - lemon



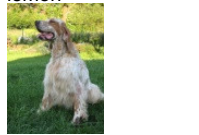
RADENTIS SBRANCO 1991-07-01
(M) LOI ST448908 (CH IB, Ch. Int. Lav.) -
lemon



ODE DEL SOLE 1993-09-10 (F) LOI
ST490145 - liver



PALAZIENSIS RAMBO 1999-11-01
(M) LOI LO0060896 (Ch W0F/CH, IT T,
ITF, Camp. Tr. (Ch GQ), CH(ES)T, CH(GB)T) -
lemon



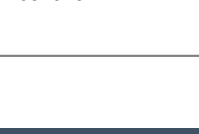
UMBLANA DEL CAVALDROSSA
2000-06-01 (F) LOI LO0336882 -
bluebelton



PALU' 1993-09-04 (M) LOE 662202 (Tr
GQ) - lemon



PACCA DE BAYARA (F) LOE
1084076



CRISMANLATOS
1980-02-01 (M) LOI
ST208763 (Ch IT) -
liver



SWING DELLA VECCHIA IRLANDA
1984-08-01 (F) LOI ST295020 (Ch L) -
lemon



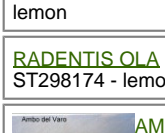
RADENTIS GIAN
1983-01-02 (M) LOI
ST258470 (Ch. Ital.
Lav., Ch. Int. Lav., Camp.
Ripr.) - lemon



BETTY 1988-03-03 (F) LOI ST364831
(Ch T Ital) - lemon



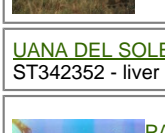
RADENTIS BORG
1987-04-30 (M) LOI
ST350267 (Ch. Int.
Lav., CH GQ, Ch. Ital.
Lav., Camp. Ripr.) -
lemon



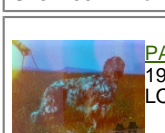
RADENTIS OLA 1984-09-30 (F) LOI
ST298174 - lemon



AMBO DEL VARO
1987-10-04 (M) LOI
ST360725 (Ch. Int. Lav.) -
lemon



UANA DEL SOLE 1987-01-05 (F) LOI
ST342352 - liver



PALAZIENSIS PEPE
1997-07-03 (M) LOI
LO99203608 - liver



LADY 1994-04-30 (F) LOI ST499069
(Ch A) - bluebelton



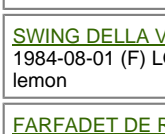
ZERO 1991-08-14 (M) LOI
ST449780 - bluebelton



QUARTA DEL CAVALDROSSA (F)
SHSB529576



RADENTIS GIAN
1983-01-02 (M) LOI
ST258470 (Ch. Ital.
Lav., Ch. Int. Lav., Camp.
Ripr.) - lemon



SWING DELLA VECCHIA IRLANDA
1984-08-01 (F) LOI ST295020 (Ch L) -
lemon



FARFADET DE RACK LAND
1990-12-12 (M) LOF 107556/17871
(CH Tr(F.94)) - lemon



GARBUNO-KO ARGJ (F) LOE
0766905

Sang italien (estimation) : 95 %
Estimation des points au pédigrée : 42

Taux de consanguinité (estimation) : 3.8 %

RADENTIS GIAN (4,5,5 X 4) : 0.016602
SWING DELLA VECCHIA IRLANDA (4 X 4) : 0.008301
DUN DEL MESHIO (6,6,7,7,7,7,7,7,7,8,8,8,8,8 X 6,7,7,8,8,8) : 0.006897
DECOR LOT (5,6,6,6,6,6 X 5,8,8) : 0.004639
CRISMANI OLAF (7,7,8,8,8,8,8,8,8 X 7,8,8,8) : 0.000488
ATOS DELLE TORRICELLE (5,6 X 8) : 0.000366
OLAF DEL TRE PONTI (6 X 8) : 0.000122
VIMON REVEL (8,8 X 8,8) : 0.000092
DAGA (7,8,8,8 X 7) : 0.000061
BRILL 2 DEL ROVERE (8,8,8 X 8) : 0.000031
TRUEBA DELLA FAGIANA (8,8,8 X 8) : 0.000031
DICH DI VAL D'IDICE (8,8 X 8) : 0.000031
DAMA 17 (8,8 X 8) : 0.000031
MISS 3 DELLE VALLATE (8 X 8) : 0.000031
ARTU (8 X 8) : 0.000031



Résultats concours

Lieu	Date	Type	Epreuve	N°	Juge	Conducteur	Qualif.	Pts
ES Isla	2019-07-28	Faisan	couple	1	Fernando valle/Jesús Soberón	Viella	MB	40
ES Alto campoo	2019-09-08	Montagne	couple	2	Jesús Soberón/Jose Maria Valera	Viella	MB	120

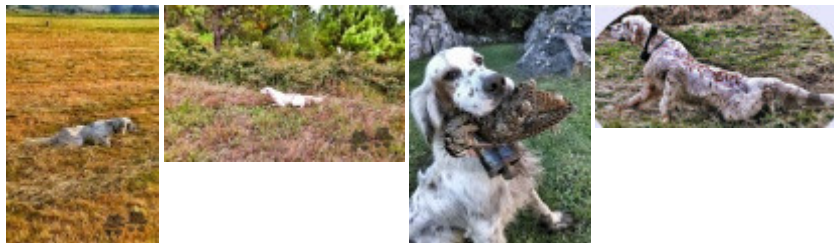
Total des points [Challenge Setter-anglais.fr 2019](#)

160

Total des points

160

Coefficients : solo x1, couple x2 / GT x1, GN x2, GS (bécasse, bécassine) x2, GS montagne x3, Printemps x2, Grande Quête x4



Note : les données ne sont pas garanties. Elles ont été entrées par les membres sans garantie d'exactitude.