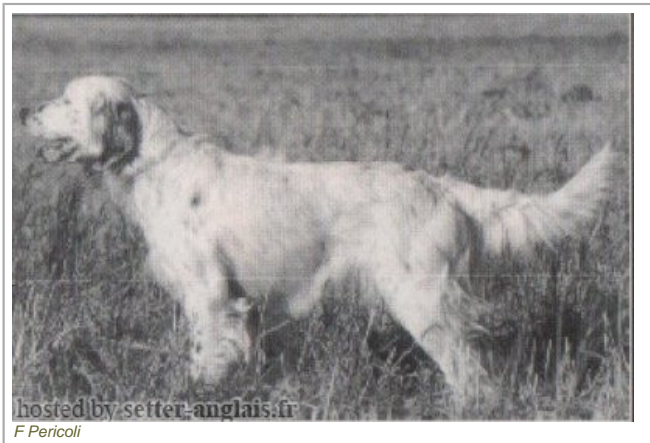











MICIA DELLE TOMAROLE

1986-08-04 (F) LOI ST333091

Couleur : BIANCO NERA SENZA MACCHIE PUNTEG / Titres : Ch. Int. Lav.
[fiche affixe](#)

hosted by setter-anglais.fr

F Pericoli

Père DECOR LOT 1978-09-22 (M) LOI ST143178 (Ch IT, Ch T, CH GQ) - bluebelton 	IRGO 1976-01-24 (M) LOI ST102949 (Ch. Int. Lav.) - lemon 	CLEM 1971-03-06 (M) LOI ST35681 (CH L, CH INT) 	 VIMON REVEL 1962 (M) LOI ST14596 (Ch L Ch Int - Recommandé)	
			DAMA 17 (F) LOI ST20396 DICH DI VAL D'IDICE (M) LOI 14346 DIANA 418 (F) LOI ST0025432	
	BONA DEL MESCHIO 1975-11-22 (F) LOI ST095120 - bluebelton 	DUN DEL MESCHIO 1972-04-08 (M) LOI ST046247 (Ch GQ - Ch reproducteur) - bluebelton 	CRISMANI OLAF 1962-05-10 (M) LOI ST19595 (CH L, CH INT) - bluebelton ALMAR LEDA 1967-06-22 (F) LOI ST5851	CRISMANI DIK 1964-11-29 (M) LOI ST28248 (CH GQ) - tricolore TEA 9 1967-04-02 (F) LOI ST004377
Mère INES DELLE TOMAROLE 1984-04-08 (F) LOI ST280833 - bluebelton	DEM 1980-08-30 (M) LOI ST222808 (CH INT L RIP) - BIANCO-MACCHIA NERA OCCHIO DX-PI 	DUN DEL MESCHIO 1972-04-08 (M) LOI ST046247 (Ch GQ - Ch reproducteur) - bluebelton 	CRISMANI OLAF 1962-05-10 (M) LOI ST19595 (CH L, CH INT) - bluebelton ALMAR LEDA 1967-06-22 (F) LOI ST5851	BANG DI MONTEDURO 1970-01-06 (M) LOI ST026590 (CH L CHINT) NADA 1971-03-17 (F) LOI ST037430
	FILLI DELLE TOMAROLE 1977-12-26 (F) LOI ST127541 (recommandée) - BIANCO NERA-TUTTA BIANCA PUNTEGG	BILL DI CEREIA 1974-06-02 (M) LOI ST080531 	LEDA 1976-04-13 (F) LOF 50709/05251 - tricolore STELLINA DELLE TOMAROLE 1973-08-12 (F) LOI ST065405	CRISMANI EROS 2 1970-01-05 (M) LOI ST039136 URIA DI CEREIA 1970-09-20 (F) LOI ST033484 TOBIA DELLE TOMAROLE 1967-11-28 (M) LOI ST009698 MIURA DELLE TOMAROLE 1967-11-28 (F) LOI ST009696

Propriétaire : Ronchi Valerio
Estimation des points au pédigrée : 43

Taux de consanguinité (estimation) : 5.2 %

DUN DEL MESCHIO (3 X 3) : 0.032532
TELL68 (7,7,8,8,8,8,8,8,8 X 7,7,7,7,8,8,8,8,8,8,8,8) : 0.003723
BRILL 2 DEL ROVERE (5,6 X 5,6) : 0.002594
BRICK DEL ROVERE (6,8 X 6,6,6,7,8,8) : 0.002289
QUES DELLE MORENE (7,7,8,8,8,8,8 X 7,7,7,7,8,8,8,8) : 0.002167
SONIA DEL ROVERE (7,7,7,8 X 7,7,7,7,7,8,8) : 0.001495
RAE2 (7,7,7,8 X 7,7,7,7,7,8,8) : 0.001495
CRISMANI BLACK (6,7,7,8 X 6,7,8) : 0.001160
SHARBERRY NICK (5 X 6) : 0.000977
GONZAGHENSIS MUR (7,7,7,8 X 7,7,8) : 0.000946
CRISMANI BILL (6,7,7 X 6,7,7) : 0.000854
TICINENSIS CAVALIER D'ARPINO (6,6 X 7) : 0.000488
VAVA DEL TIDONE (5,7 X 7) : 0.000488
ASTRA 5 (7,8 X 7,8) : 0.000244
SHARBERRY FERN (6 X 7) : 0.000244
COUNT WINDEM (7,7,7 X 8,8) : 0.000183
DUCH 3 (7 X 7) : 0.000122
QUEROS DELLE MORENE (8,8 X 8) : 0.000031



Note : les données ne sont pas garanties. Elles ont été entrées par les membres sans garantie d'exactitude.

