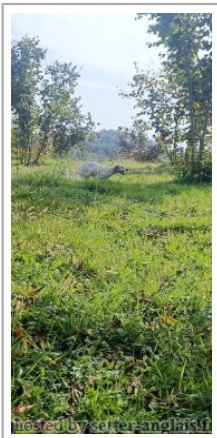
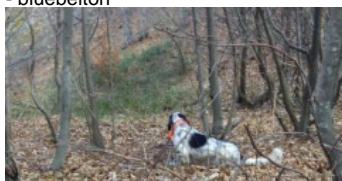


BÖRTEÇINE'S EY?AN

2022-09-20 (F) K?F-ES6662
Couleur : Fau.PBl.Env. (lemon)



Père
JAN DI VAL DI CHIANA
2016-10-03 (M)
LOI LO174711
- bluebelton



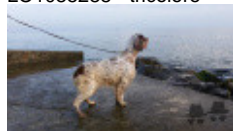
NATAN 2012-10-03 (M) LOI
LO12157969 (CH IT GQ, Camp. TR. (CH
GQ), CH(I)T) - bluebelton



KAPO' 2003-11-10 (M) LOI
LO0439835 (Ch IT GQ) - bluebelton



QUATTA 2009-06-11 (F) LOI
LO1085288 - tricolore



NERO 1997-03-29 (M)
LOI LO9817889 (Ch T, Ch
GQ) - bluebelton



KYBA 1998-01-01 (F) LOI
LO98118951 - lemon



ARTU DI ALDO DA SARNO
2006-01-02 (M) LOI
LO0666968 (Ch Italiano Trialler Int
Ripr) - tricolore

AMY 2002-08-10 (F) LOI LO02143515
- tricolore

ELFO DI VAL DI CHIANA 2009-07-05
(M) LOI LO1060024 (CH GQ (Camp. Tr.))
- bluebelton



VEGA 2005-11-14
(M) LOI
LO0669697 (Ch
GQ) - lemon



HONDA DI VAL DI CHIANA
2004-06-27 (F) LOI LO04121657 -
tricolore



ASTRID DI VAL DI CHIANA
2012-12-22 (F) LOI LO1336265 -
bluebelton

ZAIRA DI VAL DI CHIANA 2008-03-20
(F) LOI LO0926101 - bluebelton

KAPO' 2003-11-10
(M) LOI LO0439835
(Ch IT GQ) - bluebelton



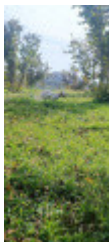
SARA 2001-06-03 (F) LOI
LO01155872 - tricolore

<p>Mère <u>BÖRTECINES ABSINTHE</u> 2017-07-04 (F) KIF-ES-1961 - bluebelton</p> 	<p><u>RIJANIS T-KASTRO</u> (M) JR704692ES</p> 	<p><u>ARTU</u> 2009-06-20 (M) LOI LO09167530 - bluebelton</p> 	<p><u>KAPO'</u> 2003-11-10 (M) LOI LO0439835 (Ch IT GQ) - bluebelton</p> 
			<p><u>AMBRA</u> 2005-09-02 (F) LOI LO0610828 - bluebelton</p>
		<p><u>RIJANIS CALLA</u> 2011-05-22 (F) 703549</p> 	<p><u>RIJANIS GRANADA-ADA</u> (F) JR700237ES</p> 
	<p><u>FARAI</u> 2013-04-08 (F) BEK 124079 - bluebelton</p> 	<p><u>RIJANIS KLOD</u> 2009-09-27 (M) JR702317ES - bluebelton</p> 	<p><u>RIJANIS PINO</u> 2006-09-29 (M) JR701026ES</p> 
		<p><u>IVA</u> 2009-09-11 (F) BEK 091070</p> 	<p><u>RIJANIS ORKA</u> 2004-05-07 (F) JR700245ES</p> 
			<p><u>PERO</u> 2005-04-15 (M) BEK 055812 - bluebelton</p>
			<p><u>IRA</u> (F) BEK 58161 - bluebelton</p>

Sang italien (estimation) : 92 %
Estimation des points au pédigrée : 12

Taux de consanguinité (estimation) : 4.8 %

KAPO' (3,4 X 4,5) : 0.035500
NERO (4,5,6,7 X 5,6,6) : 0.005371
MARTIANISIUM LUTER (5 X 5) : 0.002014
NEGUS (6,6,6,7,7,8,8 X 7,8,8,8) : 0.001556
PALAZIENSIS PEPE (6,6 X 6) : 0.000977
GUFO DI VAL DI CHIANA (5,6,6,7,8 X 6,7,7) : 0.000977
VANGOGH DELL'AD MONTES (5,6,8 X 6,7,8) : 0.000549
DECOR LOT (7,8,8,8 X 7,8,8) : 0.000519
FRANCINI'S REGINA (6 X 7) : 0.000244
FRANCINI'S LUCA (6,8,8 X 8) : 0.000183
ROYAL MOZART (7 X 8) : 0.000061
EGON BUZHAZI (8,8 X 8,8) : 0.000061
KIKA (7,8 X 7) : 0.000061
NORD DI VAL DI CHIANA (7,8 X 7) : 0.000061
OLAF DEL TRE PONTI (7,8,8 X 8) : 0.000031
FRANCINI'S ODETTE (7,8 X 8) : 0.000031
FRANCINI'S SALLY (8 X 8) : 0.000031
LEM DEL DIANELLA (7,7,7,8,8,8 X 8) : 0.000031



Note : les données ne sont pas garanties. Elles ont été entrées par les membres sans garantie d'exactitude.

