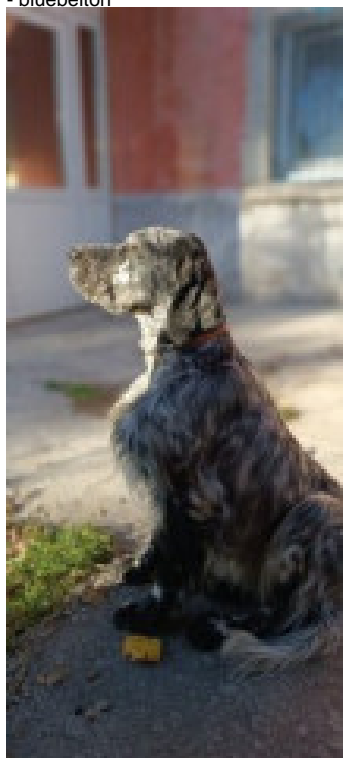


ARTUR

2022-11-19 (M) LOF 9999999999
Couleur : Fau.PBl.Env. (lemon)



Père
BACKHAM
2020-04-20 (M)
KIF-ES-1896
- bluebelton



ARTU 2017-01-01 (M)
KIF-GB-ES-1977 - bluebelton



ADASSA 2017-05-03 (F) KIF-ES-2299
- bluebelton



COSMO llamada RIVO 2014-05-31
(M) LOI LO14116475 - tricolore



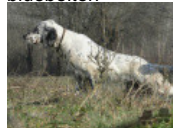
SIRI DI CROCEDOMINI 2015-05-15
(F) LOI 8995382 - lemon



NOLE OD RACE 2015-05-15 (M) LOF
JR705762 - bluebelton



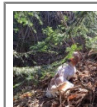
MONA 2015-05-03 (F) JR706314 -
bluebelton



APOLLO dit APO
2011-03-01 (M) LOI
LO1153034 - tricolore



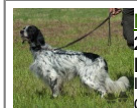
IRIS 2012-03-01 (F)
LOI LO1260342 -
lemon



TISSOT 2013-05-31 (M)
LOI LO1396775 (CH SPEC) -
lemon



LORY (F) 143753 -
lemon









NOLO DEL ZAGNIS
2012-07-05 (M) LOI
LO12129055 (CH GQ, CH
IT, Camp. Ital. Lav. (CH T),
Camp. Ripr., CH(I)B) -
bluebelton

BETA OD POSTARA 2014-01-10 (F)
JR704860ES - liver



DI-SI 2009-10-10 (M)
JR0326011 - tricolore

BODINIA 2001-11-19 (F) LOF
5646548 - bluebelton

| | | | | |
|---|---|--|--|---|
| <p>Mère <u>ASIA</u> 2014-03-19 (F) JR704945ES - bluebelton</p>  | <p><u>TOR DEGLI UBERTI</u> 2008-09-12 (M) LOI LO08140923 (LO08140923) - Liver</p>  | <p><u>RADENTIS MILANO</u> 2004-05-15 (M) LOI LO04104764 - bluebelton</p>  | <p><u>RADENTIS NOMAR</u> 1998-03-22 (M) LOI LO98133353 ((CHGQ CHITF / CHIT.B)) - liver</p> | |
| | | <p><u>CALI</u> 2007-01-21 (F) LOI LO0773181 - bluebelton</p> | <p><u>RADENTIS STELLA</u> 2001-10-24 (F) LOI LO0230668 - bluebelton</p> | <p><u>RADENTIS ZUM</u> 2002-07-08 (M) LOI LO02161851 (Camp. Tr. (Ch GQ), Camp. Int. Lav., Camp. Ital. Lav.) - lemon</p> |
| | <p><u>AREONORA</u> 2012-05-22 (F) JR704762 - tricolore</p>  | <p><u>DODO DEL BINARIO</u> (M) LOI 20090931 - tricolore</p>  | <p><u>UFO DEL BINARIO</u> 2008-03-28 (M) LOI LO0951439 (Camp. Ital. Lav.) - tricolore</p> | <p><u>SARA</u> 2003-06-10 (F) LOI LO03150166 - bluebelton</p> |
| | | <p><u>ARTA</u> 2009-01-20 (F) JR702511 - tricolore</p>  | <p><u>DUNA</u> 2004-03-26 (F) LOI LO04108577 - liver tricolore</p> | <p><u>BECKHAM</u> 2002-06-16 (M) LOI LO02143991 (Camp. Tr. (Ch GQ) Camp. Ital. Lav. Camp. Int. Lav.) - tricolore</p> |
| | | | <p><u>CHITA</u> (F) JR701647ES</p> | |

Propriétaire : Muammer Özçelik
Sang italien (estimation) : 100 %



Note : les données ne sont pas garanties. Elles ont été entrées par les membres sans garantie d'exactitude.

