

BILANDIS GORRI dit SHIVA

2009-05-28 (M) LOE 1890987
Couleur : Mar.PBl.Env (liver)
[fiche affixe](#)



hosted by setter-anglais.fr

Père
BIG JIM
2000-12-01 (M)
LOI LO0188207
(CH GQ, Ch. Int. Lav., Camp. Ripr., Ch. Ital. Lav.)
- liver



LERRY 1997-02-14 (M) LOI
ST555862 (Ch GQ, Ch IT) - bluebelton



RADENTIS TANGA 1998-09-15 (F)
LOI LO9958147 - lemon



ARNO 1988-04-17 (M) LOI ST374735
(Ch. Int. Lav., Camp. Ripr., Ch. Ital. Lav.) -
lemon



PICENUM UNGA 1990-10-02 (F) LOI
ST430406 (CH GQ) - liver



RADENTIS SBRANCO 1991-07-01
(M) LOI ST448908 (CH IB, Ch. Int. Lav.) -
lemon



BESSY 1995-02-10 (F) LOI ST515746
- lemon

CRISMANI ATOS
1980-02-01 (M) LOI
ST208763 (Ch IT) -
liver



SWING DELLA VECCHIA IRLANDA
1984-08-01 (F) LOI ST295020 (Ch L) -
lemon



BIBO 1987-04-08
(M) LOI ST356972
(Ch. Int. Lav., Ch. Ital. Lav., CH GQ) -
bluebelton

STAR 1987-01-16 (F) LOI ST346344 -
bluebelton






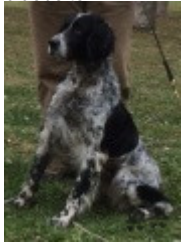


RADENTIS BORG
1987-04-30 (M) LOI
ST350267 (Ch. Int. Lav., CH GQ, Ch. Ital. Lav., Camp. Ripr.) -
lemon

RADENTIS OLA 1984-09-30 (F) LOI
ST298174 - lemon



ARNO 1988-04-17
(M) LOI ST374735
(Ch. Int. Lav., Camp. Ripr., Ch. Ital. Lav.) -
lemon

ROYAL VIENNA 1986-03-30 (F) LOI
ST324982 - lemon

| | | | |
|--|--|---|---|
| Mère BILANDIS BARE (F) LOE 1641372 | NILO DE URTXUBIGANE (M) LOE 1321360 - liver  | TITO 1998-06-08 (M) LOE 1109111 (TrGB(E.02)) - lemon  | ARNO 1988-04-17 (M) LOI ST374735 (Ch. Int. Lav., Camp. Ripr., Ch. Ital. Lav.) - lemon  |
| | UFFIE DU MAS D'EYRAUD 2003-05-16 (F) LOF 170010 - bluebelton  | LUSI DE URTXUBIGANE (F) LOE 1188659  | BRUNA 1994-01-08 (F) LOI ST493276 - bluebelton HIV DE PLAYABARRI (M) LOE 539995 JUMA DE URTXUBIGANE (F) LOE 1061009 FRANCINI'S GOGA 1995-05-29 (M) LOF 136151/20222 (TR CHA CHP CHITF CH.T. VOF/FTA VOF/FTP) - bluebelton  |

[[Lien...](#)] / Propriétaire : JORGE SILVA (00351929042601, pointerdapedramua@hotmail.com)

Tatouage : 003738K

Sang italien (estimation) : 96 %

Estimation des points au pédigrée : 27

Taux de consanguinité (estimation) : 4.5 %

ARNO (3,4 X 4) : 0.023438

DECOR LOT (6,6,6,6 X 5,6,6,7,8) : 0.009033

DUN DEL MESCHIO (6,7,7,7,8,8,8,8,8 X 7,7,7,7,7,7,8,8,8,8,8) : 0.008820

BERNA (5 X 6) : 0.001038

RADENTIS GIAN (5 X 6) : 0.001038

HALQA DELLA VECCHIA IRLANDA (5,6,6 X 6) : 0.000488

LEM DEL RESEGONE (7 X 7,8,8,8,8) : 0.000366

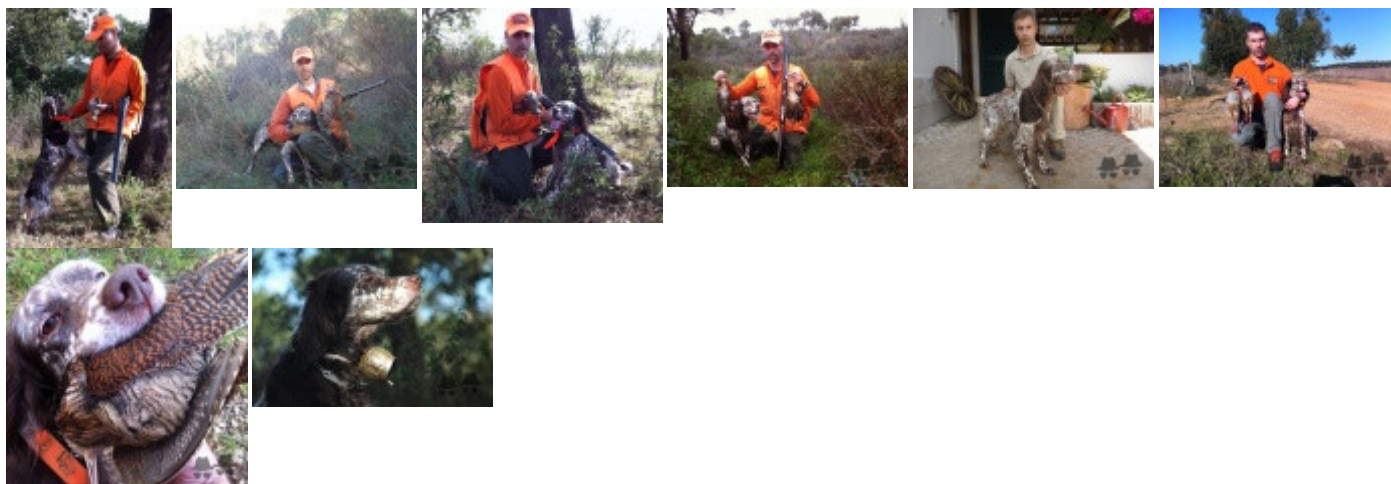
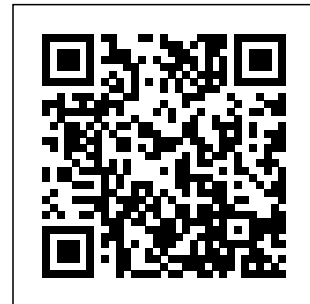
CRISMANIOLAE (7,8,8,8,8 X 8,8,8,8,8,8) : 0.000183

BRUNA DELLA MARCIOLA (6,7,7,8,8 X 7,8) : 0.000061

VIMON REVEL (8,8 X 8) : 0.000061

DICH D'IVAL D'IDICE (8 X 8) : 0.000031

DAMA 17 (8 X 8) : 0.000031



Note : les données ne sont pas garanties. Elles ont été entrées par les membres sans garantie d'exactitude.