

FLORA GKLAVINIS

2019-01-10 (F) BEK 177639
Couleur : Black white (bluebelton)



Père
BESINO'S PANTHOS
2007-08-15 (M)
BEK 075540
(CH GQ, CH IT)
- bluebelton

KAPO' 2003-11-10 (M) LOI
LO0439835 (Ch IT GQ) - bluebelton



TZOUAKA ANIMUS ILIA (F) BEK
059052 - tricolore



NERO 1997-03-29 (M) LOI
LO9817889 (Ch T, Ch GQ) - bluebelton

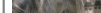


KYBA 1998-01-01 (F) LOI
LO98118951 - lemon

TUTI RAJKAL (M) BEK 058772

TZOUAKA ANIMUS MANIA (F) BEK
032242 - bluebelton

GUFO DI VAL DI CHIANA
1994-04-01 (M) LOI
ST514177 (Ch GQ) -
bluebelton



KELLI 1992-06-18 (F)
LOI ST466220 -
bluebelton



VANGOGH DELL'AD MONTES
1992-07-30 (M) LOI ST463291 (Camp.
Ripr.) - bluebelton

SARA 1989-04-30 (F) LOI ST395811 -
bluebelton

DAMON RAJKAL (M) JR79492ES

DARNA (F) JR78922

RADENTIS ASTOR 1994-03-15 (M)
LOI ST496647 - lemon

POLA DI VAL DI CHIANA 1998-06-01
(F) LOI LO98150112 - bluebelton

Mère
VENTA DEL DILKOV
(F)
BEK 177520

MERCURIO 2016-11-21 (M) LOI
LO1463346 - lemon



AIVA DEL DILKOV (F) 26282/14

ROVAL GIOB 2010-01-02 (M) LOI
LO1026711 (CH GQ, Ch. Ital. Lav.) -
BIANCO FULVO



ASIA 2010-06-08 (F) LOI
LO10140116 - lemon

PIERIAS GASS 2011-06-02 (M) LOI
LO1276643 (Ch L, Ch IL) - tricolore



M-RAJKA RAJKAL 2011-06-17 (F)
PK26277/14 - lemon

ROVAL GAGÀ
2007-01-10 (M)
LOI LO0826658
(Camp. Tr. (Ch GQ)) -
lemon



RINA 2004-01-13 (F) LOI LO0460174
- tricolore



RADENTIS COBRA
2000-06-30 (M) LOI
LO0128791 (Camp. Tr.
(Ch GQ)) - lemon

VISPA 2004-03-01 (F) LOI
LO0480837 - lemon



RADENTIS SAUL 2008-01-13
(M) LOI LO08120480 -
tricolore

BELLA DIANA GRADACKA (F)
JR700664



RADENTIS ZERO
2002-07-08
(M) LOI
LO02161853 -
lemon

BILA RAJKAL 2010-05-20 (F) 702981
- bluebelton

Taux de consanguinité (estimation) : 1.6 %

KAPO' (2 X 6) : 0.007950

RADENTIS BORG (5 X 7,7,7,7,8,8,8) : 0.003174

RADENTIS GIAN (6,8,8 X 7,7,8,8,8,8,8,8,8) : 0.001587

DECOR LOT (6,7,8,8 X 8,8,8,8,8,8) : 0.001282

NEGUS (5,5,8 X 7) : 0.001038

ROVAL MOZART (7 X 7,7,8) : 0.000305

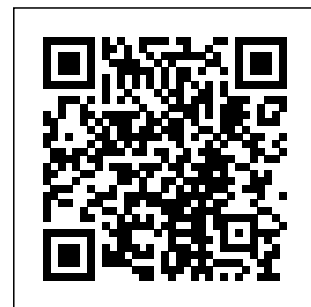
RADENTIS RAISSA (5 X 8) : 0.000244

RADENTIS DIDO (7 X 8,8,8) : 0.000183

ROVAL FLY (8 X 8,8,8,8) : 0.000061

CAPRICE (7 X 8) : 0.000061

BENHUR (7 X 8) : 0.000061



Note : les données ne sont pas garanties. Elles ont été entrées par les membres sans garantie d'exactitude.