

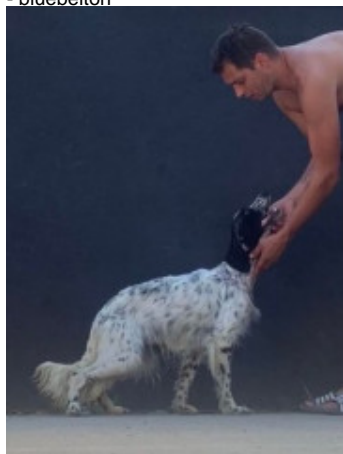
ROWENA

2022-12-07 (F) KIF-ES/
Couleur : nero e bianco (bluebelton)



hosted by: setter-anglais.fr

Père
BOJANIS BNOLO
2021-05-26 (M)
LOP 1008/21
- bluebelton



NOLO DEL ZAGNIS 2012-07-05 (M)
LOI LO12129055 (CH GQ, CH IT, Camp.
Ital. Lav. (CH T), Camp. Ripr., CH(I)B) -
bluebelton



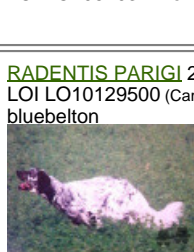
URSULA CON LE COLLINE
2014-07-25 (F) LOP 1025/14 (CH MNE
CH Tr) - lemon



GIAR D'ALERIA 2008-11-15 (M) LOI
LO09120198 (Camp. Soc., Ch. Ita. Lav.) -
lemon



ALCE DEL ZAGNIS 2009-10-27 (F)
LOI LO1054031 - lemon



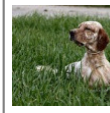
RADENTIS PARIGI 2010-05-12 (M)
LOI LO10129500 (Camp. Riproduttore.) -
bluebelton



MAJA (F) JR1029/11ES - lemon



LORD DEL ZAGNIS
2002-09-30 (M) LOI
LO02167262 (Ch. Ital. Lav.,
CH GQ, Ch. Int. Lav.) -
lemon



FATA DI BOSCOBANCO 2005-08-04
(F) LOI LO0628070 (Ch. Ital. Lav.) -
bluebelton

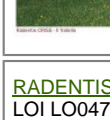


ZAC DEL ZAGNIS 2004-02-08 (M)
LOI LO04103934 - bluebelton

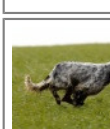
MIMI' DEL ZAGNIS 2004-02-08 (F)
LOI LO04103900 - tricolore



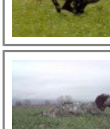
RADENTIS CRISS
2000-06-30 (M) LOI
LO0128798 - lemon



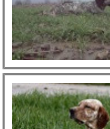
RADENTIS BIANCA 2004-02-10 (F)
LOI LO0477926 - lemon



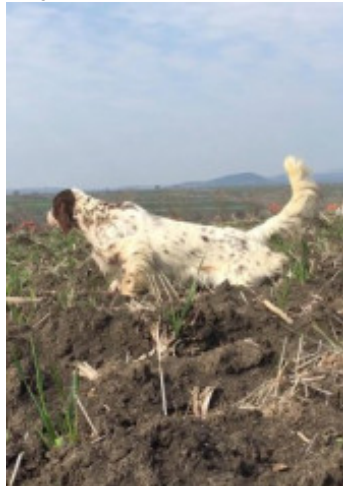
KAPO' 2003-11-10
(M) LOI LO0439835
(Ch IT GQ) - bluebelton



LUNA (F) JR702013ES
(CH EU) - bluebelton



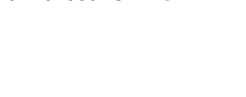
Mère
NOLA OD RACE
2015-05-15 (F)
JR705761ES
- liver



NOLO DEL ZAGNIS 2012-07-05 (M)
LOI LO12129055 (CH GQ, CH IT, Camp.
Ital. Lav. (CH T), Camp. Ripr., CH(I)B) -
bluebelton



BETA OD POSTARA 2014-01-10 (F)
JR704860ES - liver



GIAR D'ALERIA 2008-11-15 (M) LOI
LO09120198 (Camp. Soc., Ch. Ita. Lav.) -
lemon



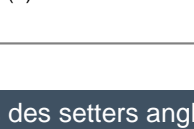
ALCE DEL ZAGNIS 2009-10-27 (F)
LOI LO1054031 - lemon



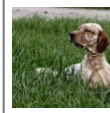
ROONEY DEL SARGIADAE
2004-06-11 (M) LOI LO04120540 (Ch
GQ, Camp. Ital. Assol., Camp. Ital. Lav., Camp.
Int. Lav.) - bluebelton



DESIANENSIS PATTY 2010-05-30
(F) JR704856ES



LORD DEL ZAGNIS
2002-09-30 (M) LOI
LO02167262 (Ch. Ital. Lav.,
CH GQ, Ch. Int. Lav.) -
lemon

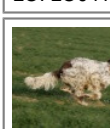


FATA DI BOSCOBANCO 2005-08-04
(F) LOI LO0628070 (Ch. Ital. Lav.) -
bluebelton



ZAC DEL ZAGNIS 2004-02-08 (M)
LOI LO04103934 - bluebelton

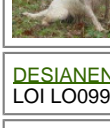
MIMI' DEL ZAGNIS 2004-02-08 (F)
LOI LO04103900 - tricolore



BIG JIM 2000-12-01
(M) LOI LO0188207
(CH GQ, Ch. Int. Lav.,
Camp. Ripr., Ch. Ital. Lav.) -
liver



CASSIA 2002-03-19
(F) LOI LO02125347 -
lemon



DESIANENSIS ISAC 2008-09-04 (M)
LOI LO0996144 - bluebelton

DESIANENSIS SONIA 2003-04-15 (F)
LOI LO03104160 (Ch.it Lav) - liver



Sang italien (estimation) : 100 %
 Estimation des points au pédigrée : 25

Taux de consanguinité (estimation) : 14.1 %

NOLO DEL ZAGNIS (2 X 2) : 0.129089
RADENTIS SBRANCO (6,6,6 X 6,7,7,7) : 0.003418
LERRY (5 X 5) : 0.001953
RADENTIS GIAN (7,8,8,8,8,8 X 7,7,7,8) : 0.001251
RADENTIS NOMAR (5 X 6) : 0.001099
ARNO (6 X 6,6,7) : 0.000732
CRISMANI ATOS (7,8,8 X 7,7,8,8,8) : 0.000427
ASOR (6,7,7,7,8,8,8,8 X 6,7,7,7,8,8,8) : 0.000397
RADENTIS BORG (7,7,7,7 X 7,8,8,8,8) : 0.000366
FLAY DEL DIANELLA (7,8,8,8,8 X 7,8,8,8,8) : 0.000305
EMO DELLA TRAPPOLA (7,8,8,8,8 X 7,8,8,8,8) : 0.000305
DECOR LOT (8,8,8,8 X 8,8,8,8,8) : 0.000275
OLAF (6,7 X 6) : 0.000244
NEGUS (7,7 X 7) : 0.000122
AKIM (7,8,8,8 X 7) : 0.000122
ROYAL VIENNA (8 X 7,7) : 0.000122
LEM DEL RESEGONE (8,8 X 8,8) : 0.000092
FRANCINI'S LUCA (8,8 X 8) : 0.000061
FRANCINI'S ASTON 1 (8,8,8 X 8,8) : 0.000061
DEM (8,8,8 X 8,8) : 0.000061
FLAY (7,8,8 X 7) : 0.000061
AMBO DEL VARO (7 X 8) : 0.000061
OLAF DEI TRE PONTI (8 X 8,8) : 0.000061
AMBRA DEL DIANELLA (8 X 8,8) : 0.000031
MARK DELLA BASSANA (8,8 X 8) : 0.000031
CKITA DEL DIANELLA (8,8 X 8) : 0.000031
NEL SON DEL DIANELLA (8,8 X 8) : 0.000031



Note : les données ne sont pas garanties. Elles ont été entrées par les membres sans garantie d'exactitude.