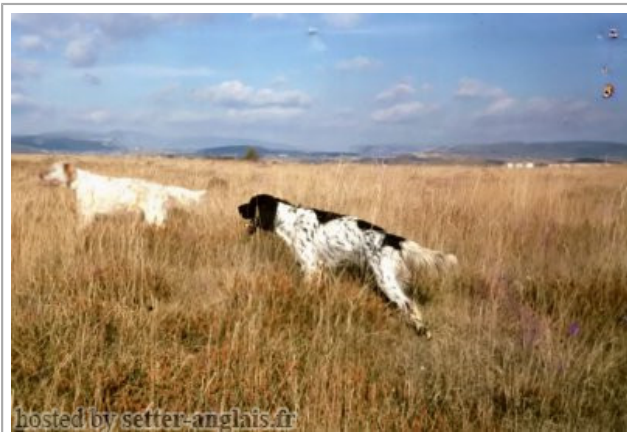










KANDYS KIM Ilamada KIM

1983-09-16 (M) H6160902JC1
Couleur : Blanco y negro (bluebelton)



<p>Père SHARNBERRY DONALD 1974-02-20 (M) LOI ST078205</p> 	<p>BRINGWOOD CAPRICE 1972 (M) KCSB0889BH (FTCh)</p>	<p>SHARNBERRY RED BRACKEN 1966 (M) 88185/66 (FTCh) - lemon</p> 	<p>SHARNBERRY KANDY 1959 (M) KCSB541AT (FTCh) - bluebelton</p> 	
	<p>SHARNBERRY LITTLE DO DI 1970-03-18 (F) KCSB0252BG (FTCh)</p> 	<p>BRINGWOOD BRIAR 1971-03-20 (F) KCSB1057938/71</p>	<p>WASSETTFELL JEM OF SHARNBERRY 1970-03-03 (M) KCSB1651BH - bluebelton</p> 	<p>WAYGOOD GREY FEATHER (F) 2186AW</p>
<p>Père GWENDOLYN'S GARRY OF SHARNBERRY 1979-04-25 (M) KCSB0105BPD10 (FT Ch.)</p>	<p>SHARNBERRY DOUGAL 1973-01-03 (M) KCSB0020BI5/73 (FTCh) - tricolore</p> 	<p>SHARNBERRY LITTLE DO DI 1970-03-18 (F) KCSB0252BG (FTCh)</p> 	<p>SHARNBERRY PAT 1966-01-02 (M) KCSB1981BA (F.T. Ch.) - bluebelton</p>	
	<p>SHARNBERRY CLARA 1975-02-17 (F) 27046/75</p>	<p>SHARNBERRY MATTAHROO 1970-03-18 (M) KCSB0251BG5/7 (FTCh)</p>	<p>LEMONI (F) IKC106168</p>	<p>SHARNBERRY LING 1969-09-20 (F) KCSB439BF (F T CH)</p>
	<p>SHARNBERRY CORAL 1968-10-09 (F) 2790/69</p>	<p>SHARNBERRY RED BRACKEN 1966 (M) 88185/66 (FTCh) - lemon</p> 	<p>SHARNBERRY FLASH 1962-02-17 (F) KCSB400AW (F.T. Ch.) - bluebelton</p>	<p>LEMONI (F) IKC106168</p>
		<p>SHARNBERRY GILLERT 1968-01-10 (M) KCSB1625BD - bluebelton</p>	<p>LEMONI (F) IKC106168</p>	<p>GROUSE OF EMLOUGH (F) IKC100549</p>
	<p>SHARNBERRY CLARA 1975-02-17 (F) 27046/75</p>	<p>SHARNBERRY CORAL 1968-10-09 (F) 2790/69</p>	<p>LEMONI (F) IKC106168</p>	<p>GAY DES INCAS 1957 (F) LOF 16414 (TR) - tricolore</p>
	<p>SHARNBERRY CLARA 1975-02-17 (F) 27046/75</p>	<p>SHARNBERRY CORAL 1968-10-09 (F) 2790/69</p>	<p>LEMONI (F) IKC106168</p>	<p>FERDIA OF NENAGH 1961-01-04 (M) (F.T. Ch.)</p>

Propriétaire : Jose Luis Maza Gainza
Sang italien (estimation) : 52 %
Estimation des points au pédigrée : 28

Taux de consanguinité (estimation) : 13.4 %

SHARBERRY LITTLE DO DI (2 X 3) : 0.062500
MOKA DE LA SALLE VERTE (3 X 4,4) : 0.015747
SHARBERRY RED BRACKEN (3 X 4) : 0.015747
LEMONI (3 X 4,4) : 0.015625
SHARBERRY KANDY (4,7 X 5,5,6) : 0.006836
FERDIA OF NENAGH (4,6 X 5,5,6) : 0.004395
SHARBERRY FLASH (5 X 4) : 0.004288
WAYGOOD FIONA (5,7,8 X 6,6,6,6,7) : 0.002983
GROUSE OF EMLOUGH (4,6 X 5,5) : 0.001953
DASHING SPOT BONDHU (5,8 X 6,6,6,7) : 0.001236
SHARBERRY WHITESTONE (6,8,8 X 7,7,7,7,7,8) : 0.000793
DASHING SCOTTIE BONDHU (6,7 X 7,7,7,8) : 0.000427
TOPPERS TONY O (7 X 6,8,8) : 0.000244
DASHING RUBY (7 X 6) : 0.000244
RECOIL BONDHU (7,8 X 7,8,8,8,8) : 0.000214
ADARE NIMA (7,7 X 8,8,8,8,8) : 0.000183
YANKEE BONDHU (7,8 X 8,8,8,8,8,8) : 0.000122



Note : les données ne sont pas garanties. Elles ont été entrées par les membres sans garantie d'exactitude.

