

DENDABERRI ZASCA

2022-04-30 (F) LOE 2634214

Couleur : Blanco y naranja (lemon) / Dyspl. : A
[fiche affixe](#)

hosted by setter-anglais.fr

DENDABERRI OBAMA 2012-10-10
(M) LOE 2130969 (CH IT) - lemon



Père

DENDABERRI TRUMP 1

2016-10-20 (M)

LOE 2351718

(TRIALER MONTAÑA, TRIALER BECADAS ,
FINALISTA PROMESAS SETTER 2.)

- lemon



DENDABERRI POZZA 2013-09-09 (F)
LOE 98765423 - Liver

RADENTIS ZUM 2002-07-08 (M) LOI
LO02161851 (Camp. Tr. (Ch GQ), Camp.
Int. Lav., Camp. Ital. Lav.) - lemon



ARA DEL ARAVINEJO 2005-08-03
(F) LOE 1544526 - lemon



DENDABERRI JULI 2007-03-12 (F)
LOE 1704247 - bluebelton



FIERO 1996-08-10
(M) LOI ST551356
(CHGQ, Ch ITF, Ch IB, Ch
ITT) - lemon



**GIBELTARIK
BLONDIE**
2000-12-11 (F) LOI
LO02122551 (CHIT.T)
- lemon

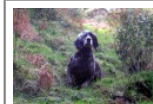


**NASH DU POULIT
SAN DANIS**
1997-01-01 (M) LOF
136341/25088 (TR
CHP CH.T. CHITF CHP
- bluebelton

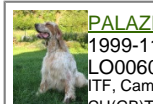
EGA DE OIANGUREN (F) LOE
1382618



GIBELTARIK CHESTER
2001-11-05 (M) LOE
KGC02202 (Ch GQ) -
lemon






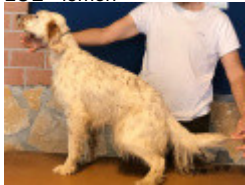




**IRA DE
PIEDRALLADA**
2005-04-13 (F) LOE
1543735 - bluebelton



PALAZIENSIS RAMBO
1999-11-01 (M) LOI
LO0060896 (Ch WOF/CH, IT T,
ITF, Camp. Tr. (Ch GQ), CH(ES)T,
CH(GB)T) - lemon



**UMBLANA DEL
CAVALDROSSA**
2000-06-01 (F) LOI
LO0336882 -
bluebelton

<p>Mère</p> <p><u>DENDABERRI URAMA</u> 2017-05-15 (F) LOE 2388133 - lemon</p>	<p><u>DENDABERRI OBAMA</u> 2012-10-10 (M) LOE 2130969 (CH IT) - lemon</p> 	<p><u>RADENTIS ZUM</u> 2002-07-08 (M) LOI LO02161851 (Camp. Tr. (Ch GQ), Camp. Int. Lav., Camp. Ital. Lav.) - lemon</p> 	<p><u>FIERO</u> 1996-08-10 (M) LOI ST551356 (CHGQ, Ch ITF, Ch IB, Ch ITT) - lemon</p> 	
	<p><u>DENDABERRI OTA</u> 2012-10-26 (F) LOE - lemon</p> 	<p><u>ARA DEL ARAVINEJO</u> 2005-08-03 (F) LOE 1544526 - lemon</p>	<p><u>GIBELTARIK CHESTER</u> 2001-11-05 (M) LOE KGC02202 (Ch GQ) - lemon</p> 	<p><u>GIBELTARIK BLONDIE</u> 2000-12-11 (F) LOI LO02122551 (CHIT.T) - lemon</p> 
			<p><u>NASH DU POULIT SAN DANIS</u> 1997-01-01 (M) LOF 136341/25088 (TR CHP CH.T. CHITF CHP CHT, CHIT, CH.T. CHITF / CHBE.B CHES.B) - bluebelton</p> 	<p><u>FIERO</u> 1996-08-10 (M) LOI ST551356 (CHGQ, Ch ITF, Ch IB, Ch ITT) - lemon</p> 
			<p><u>DENDABERRI MINI</u> 2010-11-03 (F) LOE 1999817</p>	<p><u>EG A DE OIANGUREN</u> (F) LOE 1382618</p>

Eleveur : Jose Miguel Flores / Propriétaire : Ángel Carrasco
 Puce : 992000001036450
 Sang italien (estimation) : 87 %
 Estimation des points au pédigrée : 21

Taux de consanguinité (estimation) : 19.4 %

DENDABERRI OBAMA (2 X 2) : 0.129700
RADENTIS ZUM (3 X 3,4) : 0.016205
GIBELTARIK CHESTER (4 X 3) : 0.016113
FIERO (4,5 X 4,4,5) : 0.013672
RADENTIS ERICA (5,5 X 4,5,6) : 0.007050
ARNO (5,6,6,6 X 5,5,6,6,6) : 0.003906
PALAZIENSIS RAMBO (4 X 6) : 0.001953
RADENTIS GIAN (6,7,8,8,8,8,8 X 6,6,7,7,8,8,8,8) : 0.001923
DECOR LOT (7,8,8,8,8,8 X 7,7,8,8,8,8,8,8,8,8) : 0.001007
RADENTIS SBRANCO (6,6,7 X 5,6,7) : 0.000854
AMBO DEL VARO (7,7,7 X 6,7,7,8,8) : 0.000427
RADENTIS BORG (7,7,8,8 X 6,7,8) : 0.000214
BOI (7,8,8,8 X 7) : 0.000183
NEGUS (6 X 8) : 0.000122
ATOS DELLE TORRICELLE (8,8,8 X 7,8,8,8) : 0.000122
DUN DEL MESCHIO (8,8 X 8,8,8,8) : 0.000092
ROVAL MOZART (7,8 X 7,8) : 0.000092
DITO DEL CAVALDROSSA (7,8 X 8) : 0.000061
CINA DE GONZA LOSA (7 X 8) : 0.000061
LIY OD BENCICA (7,8 X 7) : 0.000061
FALCO (8,8 X 8) : 0.000031
BERNA (8 X 8,8,8) : 0.000031



Note : les données ne sont pas garanties. Elles ont été entrées par les membres sans garantie d'exactitude.

