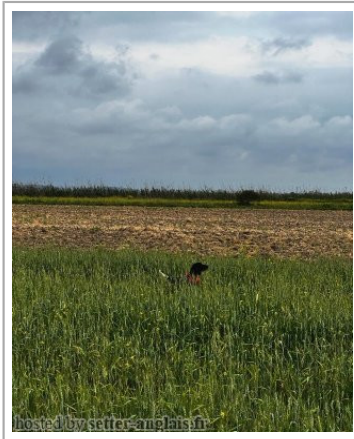


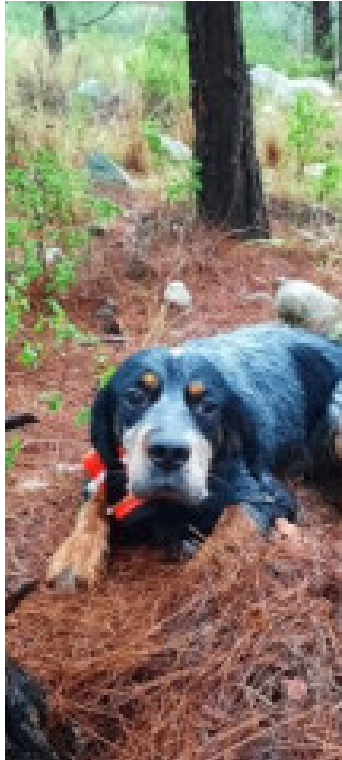
CHIVAS DELLA SILYON

2022-12-30 (F) LOF ES-6779

Couleur : Noi.Mar.Fau.PBl.Env (tricolore) / Dyspl. : A



Père
YEN?CE SETTER COOPER
 2020-06-27 (M)
 KIF-ES-4326
 - tricolore



ALPI DEL SENCANALI 2014-10-15
 (M) K?F-ES-0709 - tricolore



EYLÜL DEL SENCANALI 2016-04-20
 (F) KIS-1210ES - tricolore



LUPIN DELLO ZORINO 2005-09-10
 (M) LOI LO0643055 (Camp. Ripr.) -
 tricolore



AREONORA 2012-05-22 (F)
 JR704762 - tricolore



IVO 2009-07-13 (M) LOI LO09143882
 - bluebelton



ASIA 2014-03-19 (F) JR704945ES -
 bluebelton



PUJIOL DEL VARO
 2000-06-25 (M) LOI
 LO0112419 -
 bluebelton



LOLA DEL VARO 1996-08-22 (F) LOI
 ST547484 - bluebelton

DODO DEL BINARIO (M) LOI
 20090931 - tricolore



ARTA 2009-01-20 (F)
 JR702511 - tricolore



**LUPIN DELLO
 ZORINO** 2005-09-10
 (M) LOI LO0643055
 (Camp. Ripr.) - tricolore





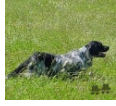




NOAH DI LORO PICENO 2008-08-09
 (F) LOI LO091730 - lemon

**TOR DEGLI
 UBERTI**
 2008-09-12 (M)
 LOI LO08140923
 (LO08140923) - Liver



AREONORA
 2012-05-22 (F)
 JR704762 - tricolore



<p>Mère OR?A CSKB 2021-02-10 (F) LOI KIF-ES-4770 - liver</p>	<p>JUPITER DEL DAMARIL 2013-01-07 (M) JR705063 - Liver</p> 	<p>KAPO' 2003-11-10 (M) LOI LO0439835 (Ch IT GQ) - bluebelton</p> 	<p>NERO 1997-03-29 (M) LOI LO9817889 (Ch T, Ch GQ) - bluebelton</p> 	
		<p>EMA DEL DUDA 2009-04-20 (F) JR703512 (Trialer)</p>	<p>KYBA 1998-01-01 (F) LOI LO98118951 - lemon</p>	<p>BOBET DI LORO PICENO 2003-08-10 (M) LOI LO041853 (Camp. Tr. (Ch GQ), Ch Ital. Lav., ChIT) - tricolore</p> 
	<p>ZONE 2015-10-15 (F) JR706028ES - Tri kolor</p>	<p>JIM DEL DAMARIL 2013-01-07 (M) 704698 - lemon</p> 	<p>OKSA-DAMAR 2005-10-10 (F) YU-JR700857ES (CH.IT.GQ)</p>	<p>KAPO' 2003-11-10 (M) LOI LO0439835 (Ch IT GQ) - bluebelton</p> 
		<p>C-BELA 2013-09-15 (F) 705596 - liver</p>	<p>EMA DEL DUDA 2009-04-20 (F) JR703512 (Trialer)</p>	<p>KID DEL DAMARIL 2011-07-01 (M) JR704385ES - tricolore</p> 
			<p>LUA (F) 703712 - lemon</p>	

Eleveur : Salim Can ?ahin / Propriétaire : Salim Can ?ahin (salimcan562@icloud.com)

Taille : 52 cm

Puce : 900233002684800

Sang italien (estimation) : 100 %

Estimation des points au pédigrée : 6



Note : les données ne sont pas garanties. Elles ont été entrées par les membres sans garantie d'exactitude.