

GISTREDO INDIA

(F) LOE 1168841
Couleur : Tricolor (tricolore)
[fiche affixe](#)



Père
GISTREDO SIOUX
2018-02-24 (M)
LOE 2411457
- Liver



BEST OD POSTARA 2014-01-10 (M)
FCA/2907 (Tr Gb) - Liver



DENDABERRI LAURA II 2010-09-17
(F) LOE 2411456 (Tr Bc, Tr Pr, PAN) -
bluebelton



ROONEY DEL SARGIADAE
2004-06-11 (M) LOI LO04120540 (Ch
GQ, Camp. Ital. Assol., Camp. Ital. Lav., Camp.
Int. Lav.) - bluebelton



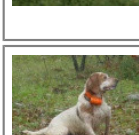
DESIANENSIS PATTY 2010-05-30
(F) JR704856ES

RADENTIS COBRA 2000-06-30 (M)
LOI LO0128791 (Camp. Tr. (Ch GQ)) -
lemon

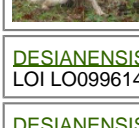


ORIOLENSIS KINA 2008-11-05 (F)
LOE 1944608 - lemon

BIG JIM 2000-12-01
(M) LOI LO0188207
(CH GQ, Ch. Int. Lav.,
Camp. Ripr., Ch. Ital. Lav.)
- liver



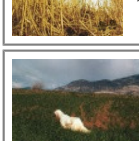
CASSIA 2002-03-19
(F) LOI LO02125347 -
lemon



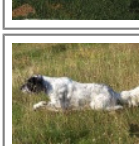
DESIANENSIS ISAC 2008-09-04 (M)
LOI LO0996144 - bluebelton

DESIANENSIS SONIA 2003-04-15 (F)
LOI LO03104160 (Ch.it Lav) - liver

LERRY 1997-02-14 (M)
LOI ST555862 (Ch GQ, Ch
IT) - bluebelton

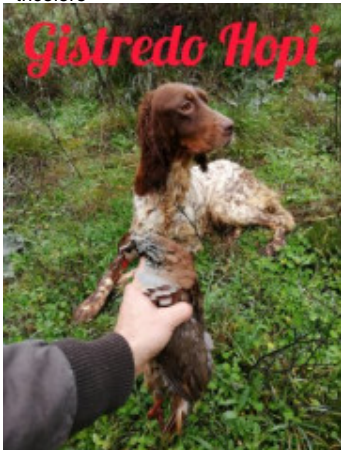





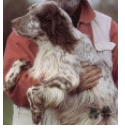







RADENTIS BELLA
1997-01-13 (F) LOI
ST559827 (IT Ch GQ) -
lemon



**ROONEY DEL
SARGIADAE**
2004-06-11 (M) LOI
LO04120540 (Ch GQ,
Camp. Ital. Assol., Camp.
Ital. Lav., Camp. Int. Lav.) - bluebelton

DORA 2002-05-14 (F) LOI
LO02116400 - tricolore

<p>Mère <u>GISTREDO HOPI</u> 2019-09-15 (F) LOE 2498129 - tricolore</p> 	<p><u>NATAN</u> 2012-10-03 (M) LOI LO12157969 (CH IT GQ, Camp. TR. (CH GQ), CH(I)T) - bluebelton</p> 	<p><u>KAPO'</u> 2003-11-10 (M) LOI LO0439835 (Ch IT GQ) - bluebelton</p> 	<p><u>NERO</u> 1997-03-29 (M) LOI LO9817889 (Ch T, Ch GQ) - bluebelton</p> 
	<p><u>GISTREDO YENI</u> 2010-03-15 (F) LOE 1981681 - tricolore</p> 	<p><u>QUATTA</u> 2009-06-11 (F) LOI LO1085288 - tricolore</p> 	<p><u>KYBA</u> 1998-01-01 (F) LOI LO98118951 - lemon</p>
		<p><u>RADENTIS NOMAR</u> 1998-03-22 (M) LOI LO98133353 ((CHGQ CHITF / CHIT.B)) - liver</p> 	<p><u>RADENTIS SBRANCO</u> 1991-07-01 (M) LOI ST448908 (CH IB, Ch. Int. Lav.) - lemon</p> 
		<p><u>GISTREDO FURIA</u> 2007-06-30 (F) LOE 1732329 - liver</p> 	<p><u>KELLI DELLA MARIKA</u> 1995-08-06 (F) LOI ST530204 (Ch. Ital. Lav.) - bluebelton</p> 
			<p><u>GIBELTARIK BORIS</u> 2000-12-14 (M) GKC02014 (Ch T GQ) - liver</p> 
			<p><u>SARA DE URTXUBIGANE dit INDIA</u> 2005-03-01 (F) LOE 1519311 (P.A.N.) - liver</p> 

[[Lien...](#)] / Eleveur : Miguel Gago / Propriétaire : Miguel Gago (0034 653727358, www.gistredo.es, miguel.gago@live.com)
Sang italien (estimation) : 98 %
Estimation des points au pédigree : 22

Taux de consanguinité (estimation) : 3 %

RADENTIS SBRANCO (5,6,7,7,7,7 X 4,6,7,7) : 0.014526
RADENTIS NOMAR (6 X 3) : 0.004395
RADENTIS GIAN (7,7,7,7,8,8,8 X 6,6,8,8,8) : 0.002747
RADENTIS BORG (6,7,8,8,8,8,8 X 5,5,7,8,8) : 0.002319
DECOR LOT (8,8,8,8,8,8,8 X 7,7,7,7,7,8,8,8) : 0.001801
ODE DEL SOLE (5 X 6,7) : 0.001465
PALAZIENSIS PEPE (6 X 6,6) : 0.000977
AMBO DEL VARO (6,8 X 7,7,8) : 0.000397
ROVAL VIENNA (7,7,7,8,8 X 8,8) : 0.000366
OLAF DEI TRE PONTI (8,8,8 X 7,8) : 0.000275
NEGUS (7 X 6) : 0.000244
FRANCINI'S LUCA (8 X 6,6) : 0.000244
NAJO (7 X 7) : 0.000122
DUN DEL MESCHIQ (8 X 8,8,8,8) : 0.000122
LEM DEL RESEGONE (8 X 7,8) : 0.000092
URSULA DEL PRATESI (8 X 7) : 0.000061
CAM DEL BINARIO (8 X 8) : 0.000031
ORFEO DELLA TRAPPOLA (8 X 8) : 0.000031



Note : les données ne sont pas garanties. Elles ont été entrées par les membres sans garantie d'exactitude.

