

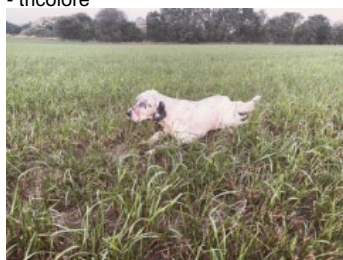
DEZA DA MOTA

2023-07-02 (M) LOE 2686822

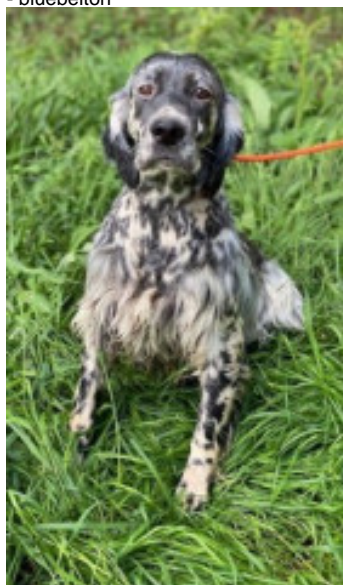
Couleur : Tricolor (tricolore)

[fiche affixe](#)

Père
[SAW DU GRAND ARRIOU](#)
 2021-05-31 (M)
 LOF 273926
 - tricolore



Mère
[LEIOANDI RADOM](#)
 2018-05-26 (F)
 LOE 2426819
 - bluebelton



[DESIANENSIS ARAMIS](#) 2011-07-10
 (M) LOF 267935/44672 (CH GQ, CH IT,
 CH(I)B, Camp. Assoluto, CH(I)T) -
 bluebelton



[NINA DE BERNACAILLE](#) 2017-06-05
 (F) LOF 252669/50646 (TAN, TR) -
 bluebelton



[NAOMO](#) 2012-10-03 (M) LOI
 LO12157965 (Ch. Ital. Lav., CH GQ) -
 bluebelton



[MARZALE'S GERARDINA](#)
 2011-05-15 (F) LOI LO11106592 -
 liver

[BOBET DI LORO PICENO](#)
 2003-08-10 (M) LOI LO041853 (Camp.
 Tr. (Ch GQ), Ch Ital. Lav., ChIT) - tricolore



[DESIANENSIS MILA](#) 2009-04-25 (F)
 LOI LO1033225 (Camp. Ital. Lav., Camp.
 Int. Lav (CH IT)) - lemon



[HENZO DES SAGNES DES MILLE
 SOURCES](#) 2012-08-02 (M) LOF
 223725/38188 (CH P, CH T, CH IT, CH GS,
 TR) - bluebelton



[HARLEY DE BERNACAILLE](#)
 2012-05-29 (F) LOF 223357/48686
 (TR) - bluebelton



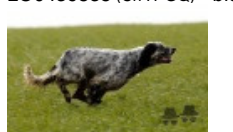
[KAPO'](#) 2003-11-10 (M) LOI
 LO0439835 (Ch IT GQ) - bluebelton



[QUATTA](#) 2009-06-11 (F) LOI
 LO1085288 - tricolore



[KAPO'](#) 2003-11-10 (M) LOI
 LO0439835 (Ch IT GQ) - bluebelton



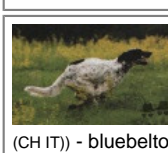
[GLORIA](#) 2009-08-12 (F) LOI
 LO1039522 - liver



[RADENTIS NOMAR](#)
 1998-03-22 (M) LOI
 LO98133353 ((CHGQ CHITF /
 CHIT.B)) - liver



[TRUJBA DI LORO PICENO](#)
 1999-09-25 (F) LOI LO0049020 -
 BIANCO MASCHERA ASIMMETRICA
 SX E



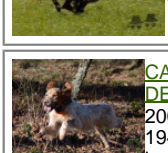
[DESIANENSIS
 BOSE](#) 2005-05-01
 (M) LOI
 LO05133201 (Camp.
 Ital. Lav., Camp. Int. Lav
 (CH IT)) - bluebelton



[ASIA DI
 VALPANARO](#)
 2002-06-12 (F) LOI
 LO02133534 (Ch T,
 Camp. Tr. (Ch GQ)) -
 bluebelton



[KAPO'](#) 2003-11-10
 (M) LOI LO0439835
 (Ch IT GQ) - bluebelton



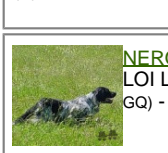
[CALIE DES SAGNES
 DES MILLE SOURCES](#)
 2007-09-21 (F) LOF
 194582/37926 (TR) -
 lemon



[ASTRO DE
 BERNACAILLE](#)
 2005-05-24 (M) LOF
 181526/32274 (TR) -
 bluebelton



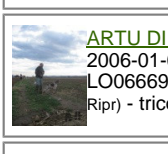
[CALI DE BERNACAILLE](#) 2007-04-28
 (F) LOF 191345/39504 - tricolore



[NERO](#) 1997-03-29 (M)
 LOI LO9817889 (Ch T, Ch
 GQ) - bluebelton



[KYBA](#) 1998-01-01 (F) LOI
 LO98118951 - lemon



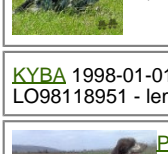
[ARTU DI ALDO DA SARNO](#)
 2006-01-02 (M) LOI
 LO0666968 (Ch Italiano Trialler Int
 Ripr) - tricolore



[AMY](#) 2002-08-10 (F) LOI LO02143515
 - tricolore



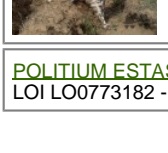
[NERO](#) 1997-03-29 (M)
 LOI LO9817889 (Ch T, Ch
 GQ) - bluebelton



[KYBA](#) 1998-01-01 (F) LOI
 LO98118951 - lemon



[POLITIUM BRUNO](#)
 2004-05-02 (M) LOI
 LO0480581 - liver



[POLITIUM ESTASY](#) 2007-02-05 (F)
 LOI LO0773182 - lemon

Eleveur : setter da mota / Propriétaire : setter da mota
Sang italien (estimation) : 89 %
Estimation des points au pédigrée : 28

Taux de consanguinité (estimation) : 3.9 %

KAPO' (4 X 3,3) : 0.031250
NEGUS (7,7,8 X 6,6,6,7,8,8) : 0.001892
DECOR LOT (7,8,8,8,8,8,8,8 X 7,7) : 0.001221
NERO (5 X 4,4,6) : 0.000977
PALAZIENSIS PEPE (6 X 6,6) : 0.000977
FRANCINI'S LUCA (6,7 X 6) : 0.000732
RADENTIS SBRANCO (5,8 X 7) : 0.000584
LERRY (7 X 6) : 0.000244
ARNQ (7,8 X 7,8) : 0.000214
LEM DEL RESEGONE (8,8 X 7,7,8,8) : 0.000183
RADENTIS BORG (6,6 X 8) : 0.000122
DEM (7,8,8,8 X 7) : 0.000122
MERA DELL ORSONE (8,8 X 7,7) : 0.000122
LEM DEL DIANELLA (8,8 X 7,7,7,8,8,8) : 0.000122
EGON BUZAHAZI (7,8 X 8,8) : 0.000122
FRANCINI'S RAS (7 X 8) : 0.000061
RUDY DEL DIANELLA (7 X 8) : 0.000061
FRANCINI'S VANITY (8,8 X 8) : 0.000031
OLAF DEL TRE PONTI (8 X 7,7,8) : 0.000031
ALA (8 X 7,7,8) : 0.000031
FRANCINI'S ASTON 1 (8 X 7,7,8) : 0.000031
CAM DEL BINARIO (8 X 8) : 0.000031



Note : les données ne sont pas garanties. Elles ont été entrées par les membres sans garantie d'exactitude.