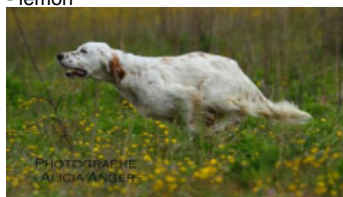


**LARREABURU ROSSY**

(F) LOE  
Couleur : Blanco y negro (bluebelton)  
[fiche affixe](#)

hosted by [setter-anglais.fr](#)

Père  
**DENDABERRI PERU**  
2013-05-02 (M)  
LOE  
- lemon

PHOTOGRAPHE  
- ALICIA ANGEL

**GIBELTARIK CHESTER** 2001-11-05  
(M) LOE KGC02202 (Ch GQ) - lemon



**FIERO** 1996-08-10 (M) LOI ST551356  
(CHGQ, Ch ITF, Ch IB, Ch ITT) - lemon



**RADENTIS ERICA** 1995-05-25 (F)  
LOI ST531494 ((CH(I)B)) - lemon



**ARNO** 1988-04-17  
(M) LOI ST374735  
(Ch. Int. Lav., Camp.  
Ripr., Ch. Ital. Lav.) -  
lemon

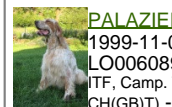


**INDIRA** 1990-06-01  
(F) LOI ST423625 (Ch  
IT) - lemon



**RADENTIS  
SBRANCO**  
1991-07-01 (M) LOI  
ST448908 (CH IB, Ch.  
Int. Lav.) - lemon

**ODE DEL SOLE** 1993-09-10 (F) LOI  
ST490145 - liver



**PALAZIENSIS RAMBO**  
1999-11-01 (M) LOI  
LO0060896 (Ch WOF/CH, IT T,  
ITF, Camp. Tr. (Ch GQ), CH(ES)T,  
CH(GB)T) - lemon



**UMBLANA DEL  
CAVALDROSSA**  
2000-06-01 (F) LOI  
LO0336882 -  
bluebelton

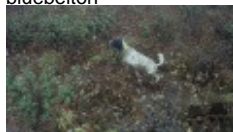


**PALU'** 1993-09-04  
(M) LOE 662202 (Tr  
GQ) - lemon

**DENDABERRI LEMA** 2009-12-17 (F)  
LOE 1918648 (CH IT, CH(I)T) - lemon







**DENDABERRI JAI** 2007-03-12 (M)  
LOE 1704343 (TrCP, TrPR, TrBC) -  
bluebelton



**SIVA** 2001-05-28 (F) LOE 1252301 -  
lemon

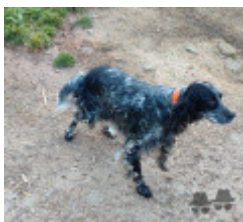
**PACCA DE BAYARA** (F) LOE  
1084076

|  |  |  |  |
|--|--|--|--|
| <p>Mère</p> <p><u>LARREABURU HANNA</u><br/>2018-05-03 (F)<br/>LOE 2332019<br/>- bluebelton</p> | <p><u>EKI DE AIZKORRI</u> 2010-06-20 (M)<br/>LOE 1111000210 - bluebelton</p> | <p><u>IDARGA-KO KU</u> (M) LOE 1653038</p>   |  <p><u>SENECA DE L'EL BALDIO</u> 2001-06-09 (M) LOE 1251476 - lemon</p> |
|  |  |  | <p><u>IDARGA-KO EKEL</u> 2008-06-10 (F)<br/>LOE 1418821</p>  |
|  |  | <p><u>VICAL DE PLAYABARRI</u> (F) LOE 1518258 - Blanco y Marrón</p>  | <p><u>EUSKAL ZAR</u> (M) LOE 1203361</p>   |
|  |  |  |  <p><u>SANOA DE PLAYABARRI</u> (F) LOE 1313421 - bluebelton</p>         |
|  | <p><u>LARREABURU ALUR</u> (F) LOE 2520172 - bluebelton</p>                   | <p><u>FLAY Ilamada MOU</u> 2010-07-09 (M)<br/>LOE 1997633 - tricolore</p>  |  <p><u>TRI</u> (M) LOE 1621746</p>                                      |
|  |  | <p><u>KIRA DE AIZKORRI</u> 2010-07-09 (F)<br/>LOE 2020718 - bluebelton</p>  | <p><u>ESTRELLA I</u> (F) LOE 1877785</p>   |
|  |  |  | <p><u>IDARGA-KO KU</u> (M) LOE 1653038</p>   |
|  |  |  | <p><u>VICAL DE PLAYABARRI</u> (F) LOE 1518258 - Blanco y Marrón</p>  |

Sang italien (estimation) : 83 %  
Estimation des points au pédigrée : 16

## Taux de consanguinité (estimation) : 3 %

RADENTIS GIAN (5,5,6,6 X 6,7,7,8,8,8,8) : 0.009079  
ARNO (4 X 6,6,7,7) : 0.005859  
RADENTIS SBRANCO (4 X 6,7,7,7,8) : 0.005707  
SWING DELLA VECCHIA IRLANDA (5,5 X 6,7,7,7,8,8) : 0.004669  
DECOR LOT (6,6,7,7,7,7,7 X 7,8,8,8) : 0.001282  
RADENTIS BORG (5 X 7,7,8,8,8,8,8,8) : 0.001221  
PALU' (4 X 8) : 0.000500  
JEFF DE PLAYABARRI (6 X 7,8) : 0.000366  
ROVAL VIENNA (6 X 7,8) : 0.000366  
DUN DEL MESCCHIO (7,7,7,8,8,8,8,8,8,8 X 8) : 0.000214  
LIY OD BENCICA (7 X 7,8,8) : 0.000183  
BERNA (7,7 X 8) : 0.000061  
FALCO (8 X 8,8) : 0.000061  
EMO DELLA TRAPPOLA (8 X 8) : 0.000031  
BOI (8 X 8) : 0.000031



Note : les données ne sont pas garanties. Elles ont été entrées par les membres sans garantie d'exactitude.

