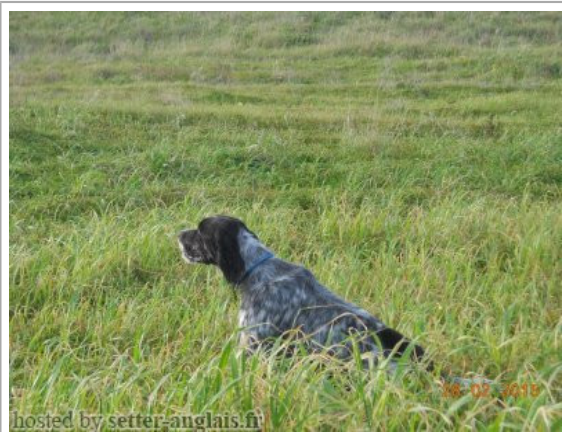


BRUNA DI ARIOVERSA

2013-04-21 (F) BEK 122974
Couleur : Bluebelton
[fiche affixe](#)



Père
CANENSIS RINGO
2006-04-12 (M)
BEK 61089
(Ch-GR-T)
- bluebelton



KRIONERIOU DIAS JUNIOR (M) BEK 44845

OTELLO DI TORRE MASINO
1999-01-07 (M) LOI LO9984511 - bluebelton



ASPIS 1990-03-05 (M)
LOI ST416169 (CH GQ,
Camp. Ripr., Ch. Ital. Lav.) - bluebelton

LEDDA DEL FALSO 1995-07-15 (F)
LOI ST525745 - bluebelton

KRIONERIOU HXO (F) BEK 24609

OREKA GARDEN (M) BEK 004747

KRIONERIOU GAZELA (F) BEK 14033

CANENSIS FURIA (F) BEK 44979 (MB)



CANENSIS RUDY (M) BEK 25175



ERIK (M) BEK 07124



ZARA DI VALMARECCHIA
1997-07-01 (F)
BEK 017092 - bluebelton

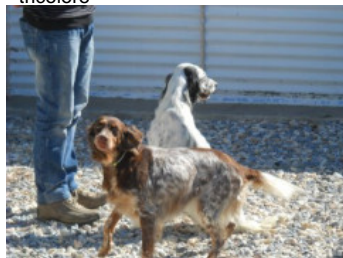
GIP DI CROCEDOMINI
1998-03-25 (F) LOI LO98144899 - bluebelton



BEA (F) BEK 35652

UGOLA DEL BINARIO 1992-03-03 (F)
LOI ST458256 - tricolore

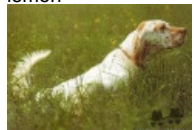
Mère
RADENTIS BORA
2009-01-14 (F)
LOI LO09151630
- tricolore



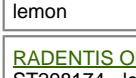
RADENTIS NOMAR 1998-03-22 (M)
LOI LO98133353 ((CHGQ CHITF / CHIT.B)) - liver



RADENTIS SBRANCO 1991-07-01 (M) LOI ST448908 (CH IB, Ch. Int. Lav.) - lemon



RADENTIS BORG
1987-04-30 (M) LOI ST350267 (Ch. Int. Lav., CH GQ, Ch. Ital. Lav., Camp. Ripr.) - lemon



RADENTIS OLA 1984-09-30 (F) LOI ST298174 - lemon

KELLI DELLA MARIKA 1995-08-06 (F) LOI ST530204 (Ch. Ital. Lav.) - bluebelton



RADENTIS BORG
1987-04-30 (M) LOI ST350267 (Ch. Int. Lav., CH GQ, Ch. Ital. Lav., Camp. Ripr.) - lemon



ZARA DELLA MARIKA 1993-06-10 (F) LOI ST482071 - bluebelton

RADENTIS BOSS 1997-01-13 (M) LOI ST559823 - lemon



RADENTIS SBRANCO
1991-07-01 (M) LOI ST448908 (CH IB, Ch. Int. Lav.) - lemon

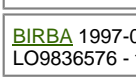


ODE DEL SOLE 1993-09-10 (F) LOI ST490145 - liver

RADENTIS TEBE 2003-07-16 (F) LOI LO03143448 - bluebelton

RADENTIS DIVA 1999-01-11 (F) LOI LO99121035 - bluebelton

RADENTIS SBRANCO
1991-07-01 (M) LOI ST448908 (CH IB, Ch. Int. Lav.) - lemon

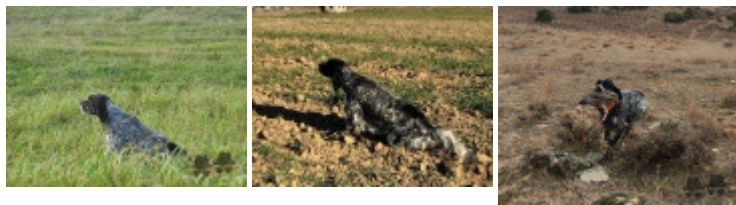
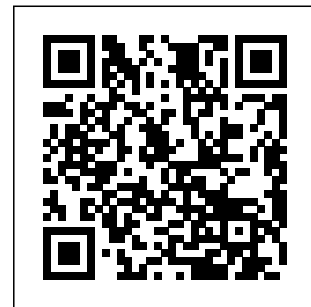


BIRBA 1997-05-29 (F) LOI LO9836576 - tricolore

Tatouage : 12288405
Sang italien (estimation) : 94 %
Estimation des points au pédigrée : 18

Taux de consanguinité (estimation) : 1.8 %

DECOR LOT (7,7,7,8,8,8 X 6,6,6,6,7,7,7,7,7,7,8,8) : 0.007996
RADENTIS GIAN (6 X 5,5,6,6,6) : 0.003418
DUN DEL MESHIO (8,8,8,8,8,8,8 X 7,7,7,7,8,8,8,8,8,8,8,8) : 0.003235
RADENTIS DIDO (7 X 5,6,6) : 0.000977
ROYAL MOZART (6 X 6,7,7) : 0.000977
DEM (7,8 X 6,7) : 0.000549
ROYAL VIENNA (6 X 6) : 0.000488
LEM DEL RESEGONE (7 X 8) : 0.000061
FRANCINI'S PEGGY (8 X 8) : 0.000031
MUR (8 X 8,8) : 0.000031



Note : les données ne sont pas garanties. Elles ont été entrées par les membres sans garantie d'exactitude.