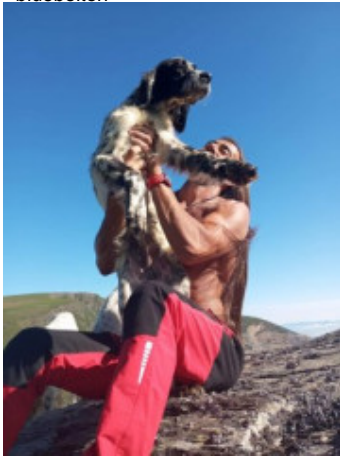


GISTREDO QUESS

(F) LOE
Couleur : Blanco y negro (bluebelton)
[fiche affixe](#)



Père
GISTREDO MOHICANO
(M)
LOE
- bluebelton



H DE FEUNTEUN BLEIS 2012-08-09
(M) LOF 224372/39370 (CHGQ, CHIT,
CHPACE GQ, VOF/GQ) - bluebelton



GISTREDO INNUIT 2019-09-15 (F)
LOE 2498130 - tricolore



CYCLONE DU BARALAN 2007-08-03
(M) LOF 196686/032337 (TR, CH P, CH
IT) - bluebelton



**BOHEME DE L'OREE DU BOIS
BECASSES** 2006-06-28 (F) LOF
188159/36230 (TR, CH P, CH T) -
bluebelton



NATAN 2012-10-03 (M) LOI
LO12157969 (CH IT GQ, Camp. TR. (CH
GQ), CH(IT)) - bluebelton



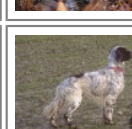
GISTREDO YENI 2010-03-15 (F) LOE
1981681 - tricolore



BIG JIM 2000-12-01
(M) LOI LO0188207
(CH GQ, Ch. Int. Lav.,
Camp. Ripr., Ch. Ital. Lav.)
- liver



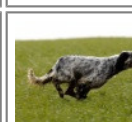
SORIA DE HAIR
2001-06-05 (F) LOF
160910/29880 (TR) -
tricolore



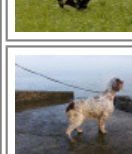
**TIM DE ROCHE
VILAINE** 2002-02-06
(M) LOF
163324/27344 (CH P,
TR GQ) - bluebelton



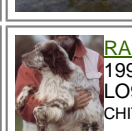
**UNE BELLE DE
L'OREE DU BOIS
BECASSES**
2003-07-01 (F) LOF
171912/33599 (TR, CH
P, CH T) - bluebelton



KAPO' 2003-11-10
(M) LOI LO0439835
(Ch IT GQ) - bluebelton



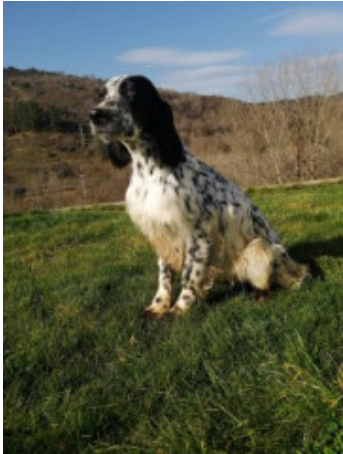
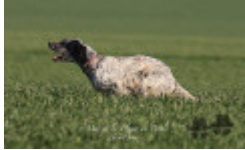


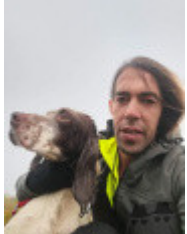
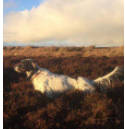








QUATTA
2009-06-11 (F)
LOI LO1085288 -
tricolore



RADENTIS NOMAR
1998-03-22 (M) LOI
LO98133353 ((CHGQ CHIT /
CHIT.B)) - liver



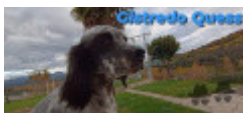
**GISTREDO
FURIA**
2007-06-30 (F)
LOE 1732329 -
liver

<p>Mère GISTREDO COCHISE 2022-08-06 (F) LOE - bluebelton</p> 	<p>MAC DE LA PLUME DU PÉVÈLE 2016-06-20 (M) LOF 247518/42279 (CH GQ, CH IT, VVOF/GQ) - bluebelton</p> 	<p>H DE FEUNTEUN BLEIS 2012-08-09 (M) LOF 224372/39370 (CHGQ, CHIT, CHRACE GQ, VOF/GQ) - bluebelton</p> 	<p>CYCLONE DU BARALAN 2007-08-03 (M) LOF 196686/032337 (TR, CH P, CH IT) - bluebelton</p> 
	<p>GISTREDO CAHOKIA 2019-09-15 (F) LOE 2498128 - Liver</p> 	<p>NIKITA DE CORIAM 2014-07-12 (F) LOF 242948/47601 (CH-FTP) - tricolore</p> 	<p>NATAN 2012-10-03 (M) LOI LO12157969 (CH IT GQ, Camp. TR. (CH GQ), CH(I)T) - bluebelton</p> 
		<p>NATAN 2012-10-03 (M) LOI LO12157969 (CH IT GQ, Camp. TR. (CH GQ), CH(I)T) - bluebelton</p> 	<p>HOT LOVE DE CORIAM 2008-08-29 (F) LOSH1049371 - bluebelton</p> 
		<p>GISTREDO YENI 2010-03-15 (F) LOE 1981681 - tricolore</p> 	<p>KAPO' 2003-11-10 (M) LOI LO0439835 (Ch IT GQ) - bluebelton</p> 
			<p>QUATTA 2009-06-11 (F) LOI LO1085288 - tricolore</p> 
			<p>RADENTIS NOMAR 1998-03-22 (M) LOI LO98133353 ((CHGQ CHIT / CHIT.B)) - liver</p> 
			<p>GISTREDO FURIA 2007-06-30 (F) LOE 1732329 - liver</p> 

Eleveur : Miguel Gago / Propriétaire : Gago (653727358, www.gistredo.es, miguel.gago@live.com)
Sang italien (estimation) : 78 %
Estimation des points au pédigrée : 27

Taux de consanguinité (estimation) : 15.1 %

H DE FEUNTEUN BLEIS (2 X 3) : 0.062500
NATAN (3 X 3,4) : 0.046875
GISTREDO YENI (3 X 3) : 0.033630
RADENTIS SBRANCO (5,6,7,8,8 X 5,7,7,7,8,8) : 0.002853
RADENTIS NOMAR (4 X 4,6) : 0.002228
NERO (5 X 5,6,6) : 0.000977
RADENTIS BORG (6,6,7,8 X 6,6,8,8,8,8) : 0.000458
FRANCINI'S LUCA (7,7 X 7,7,8,8) : 0.000427
NEGUS (7,7 X 7,8,8,8,8) : 0.000427
DECOR LOI (8,8,8,8,8 X 8,8,8,8,8) : 0.000397
OLAF DEI TRE PONTI (8,8 X 8) : 0.000031



Note : les données ne sont pas garanties. Elles ont été entrées par les membres sans garantie d'exactitude.

