

DENDABERRI BRENO

2024-10-10 (M) LOE 2837650

Couleur : Tricolor (tricolore)

[fiche affixe](#)

Père

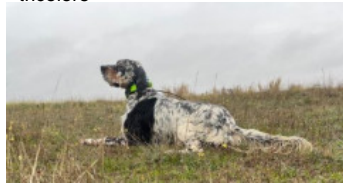
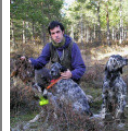
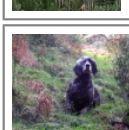
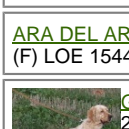
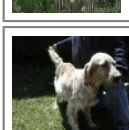
DENDABERRI XENON

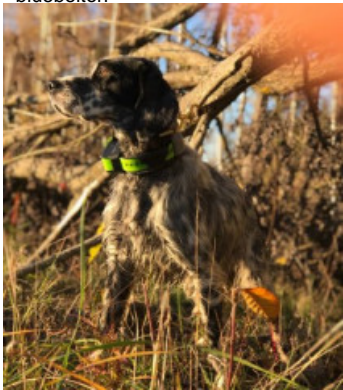
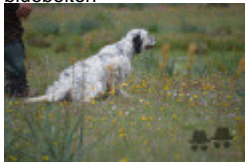


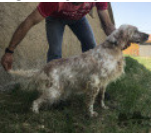
2020-04-05 (M)

LOE 2530620

(ViceCampeón de Europa Becadas)

- tricolore

**DENDABERRI PIRLO** 2013-07-01 (M)
LOE 1747738 (Ch IT) - bluebelton**DENDABERRI SANTA** 2015-09-14 (F)
LOE 2286729 (CAMPEONA DE EUROPA
BECADAS 2017-2019-2021CAMPEONA
EUROPA MONTAÑA 2018) - lemon**DENDABERRI JAI** 2007-03-12 (M)
LOE 1704343 (TrCP, TrPR, TrBC) -
bluebelton**BRUJA DEL ALTO PAS** 2009-04-02
(F) LOE 1871490 - bluebelton**DENDABERRI OBAMA** 2012-10-10
(M) LOE 2130969 (CH IT) - lemon**DENDABERRI LORA** 2009-12-12 (F)
LOE 1918681 - lemon**PALAZIENSIS RAMBO**
1999-11-01 (M) LOI
LO0060896 (Ch W0F/CH, IT T,
ITF, Camp. Tr. (Ch GQ), CH(ES)T,
CH(GB)T) - lemon**UMBLANA DEL
CAVALDROSSA**
2000-06-01 (F) LOI
LO0336882 -
bluebelton**GIBELTARIK CHESTER**
2001-11-05 (M) LOE
KGC02202 (Ch GQ) -
lemon**IRA DE
PIEDRALLADA**
2005-04-13 (F) LOE
1543735 - bluebelton**RADENTIS ZUM**
2002-07-08 (M) LOI
LO02161851 (Camp.
Tr. (Ch GQ), Camp. Int.
Lav., Camp. Ital. Lav.) -
lemon**ARA DEL ARAVINEJO** 2005-08-03
(F) LOE 1544526 - lemon**GIBELTARIK CHESTER**
2001-11-05 (M) LOE
KGC02202 (Ch GQ) -
lemon**DENDABERRI IRATXE**
2006-10-12 (F) LOE -
lemon

<p>Mère</p> <p><u>DENDABERRI UMBLANA</u> 2017-07-01 (F) LOE 2340912 (TOP TEN JÓVENES PROMESAS SETTER CLUB 2019) - bluebelton</p> 	<p><u>MARC DEL FAENOR NI</u> 2012-10-01 (M) LOE 2141505 (CH IT GQ) - bluebelton</p> 	<p><u>MARK</u> 2011-06-14 (M) LOI LO11112072 (Tr GQ) - bluebelton</p>	<p><u>ROONEY DEL SARGIADAE</u> 2004-06-11 (M) LOI LO04120540 (Ch GQ, Camp. Ital. Assol., Camp. Ital. Lav., Camp. Int. Lav.) - bluebelton</p>
	<p><u>DENDABERRI SISI</u> 2015-10-01 (F) LOE 2289783 - lemon</p>	<p><u>SIMBA DEL FAENOR NI dite TACA</u> 2008-10-29 (F) LOE 1865076 (Tr becadas) - MARRÓN/BLANCO</p> 	<p><u>HELI</u> 2008-09-15 (F) LOI LO0991918 - tricolore</p>
	<p><u>DENDABERRI JAI</u> 2007-03-12 (M) LOE 1704343 (TrCP, TrPR, TrBC) - bluebelton</p> 	<p><u>DENDABERRI JAI</u> 2007-03-12 (M) LOE 1704343 (TrCP, TrPR, TrBC) - bluebelton</p>	<p><u>PALAZIENSIS RAMBO</u> 1999-11-01 (M) LOI LO0060896 (Ch W0F/CH, IT T, ITF, Camp. Tr. (Ch GQ), CH(ES)T, CH(GB)T) - lemon</p>
	<p><u>DENDABERRI PEGGI</u> 2013-06-01 (F) LOE - lemon</p> 		<p><u>UMBLANA DEL CAVALDROSSA</u> 2000-06-01 (F) LOI LO0336882 - bluebelton</p>
			<p><u>BUHO DEL ALTO PAS</u> 2009-04-02 (M) LOE 1871491 (Ganador PAN Nacional Setter Club 2010) - lemon</p>
			<p><u>DENDABERRI LORA</u> 2009-12-12 (F) LOE 1918681 - lemon</p>

Puce : 942000029857306

Sang italien (estimation) : 91 %

Estimation des points au pédigrée : 29

Taux de consanguinité (estimation) : 8.4 %

DENDABERRI JAI (3 X 3) : 0.031250
DENDABERRI LORA (3 X 4) : 0.016602
GIBELTARIK CHESTER (4,4 X 5,5) : 0.012085
FIERO (5,5,5 X 6,6,6) : 0.004883
IRA DE PIEDRALLADA (4 X 5) : 0.003967
ARNO (6,6,6,7,7 X 6,7,7,7,8) : 0.003906
RADENTIS D'ESPANA (5,6 X 6,6,7) : 0.002747
RADENTIS SBRANCO (6,6,6,7,7 X 7,7,7,7,8) : 0.002747
RADENTIS GIAN (7,7,7,8,8,8,8,8,8 X 8,8,8,8,8,8) : 0.001495
RADENTIS ERICA (5,5,6 X 6,6) : 0.001007
PALAZIENSIS PEPE (5 X 5,6) : 0.000977
TITO (6 X 5) : 0.000977
RADENTIS BORG (7,7,7,7,8,8,8 X 8,8,8,8,8,8) : 0.000458
ROVAL VIENNA (8,8 X 8,8,8) : 0.000183
SWING DELLA VECCHIA IRLANDA (7,7,7,8,8,8 X 7,8,8,8,8) : 0.000153
CINA DE GONZA LOSA (7,7 X 8,8) : 0.000122
GAETANO DEL BINARIO (6 X 6,8) : 0.000122
MARK DELLA BASSANA (7 X 7,8,8) : 0.000122
DECOR LOT (8,8,8 X 8) : 0.000092
AMBO DEL VARO (7,7,8,8 X 8,8) : 0.000061
DEM (8 X 7) : 0.000061
ROVAL MOZART (8,8 X 8) : 0.000031

Note : les données ne sont pas garanties. Elles ont été entrées par les membres sans garantie d'exactitude.

