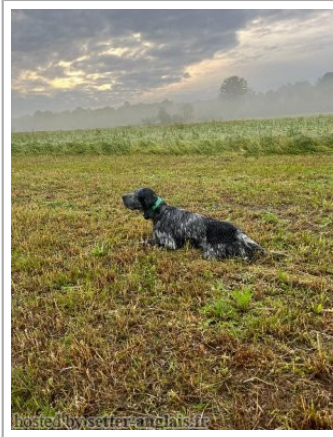


TARTALKY'S MELAMPO

2017-07-10 (M) LOI LO17152620
Couleur : nero e bianco (bluebelton)
[fiche affixe](#)



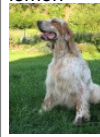
Père
STEPHANENSIS FRANK
2009-01-02 (M)
LOI LO0998334
(Ch. Ital. Lav.)
- bluebelton

SIGARO 2005-02-08 (M) LOI
LO0579156 (Ch. Ital. Lav., Camp. Ripr.) -
liver



RADENTIS BIRBA 2005-01-12 (F)
LOI LO0572504 - bluebelton

PALAZIENSIS RAMBO 1999-11-01
(M) LOI LO0060896 (Ch WOF/CH, IT T,
ITF, Camp. Tr. (Ch GQ), CH(ES)T, CH(GB)T) -
lemon



FANNI 2000-05-15 (F) LOI
LO00120702 - liver

RADENTIS NOMAR 1998-03-22 (M)
LOI LO98133353 ((CHGQ CHITF /
CHIT.B)) - liver



RADENTIS SONIA 2001-10-24 (F)
LOI LO0230670 - lemon



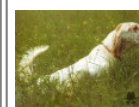
PALAZIENSIS PEPE
1997-07-03 (M) LOI
LO99203608 - liver

LADY 1994-04-30 (F) LOI ST499069
(Ch A) - bluebelton



**RADENTIS
SBRANCO**
1991-07-01 (M) LOI
ST448908 (CH IB, Ch.
Int. Lav.) - lemon

DERNA 1996-06-24 (F) LOI
ST547510 - bluebelton



**RADENTIS
SBRANCO**
1991-07-01 (M) LOI
ST448908 (CH IB, Ch.
Int. Lav.) - lemon







**KELLI DELLA
MARIKA** 1995-08-06
(F) LOI ST530204 (Ch.
Ital. Lav.) - bluebelton



BORG 1991-04-08
(M) LOI ST441773 -
lemon

RADENTIS NERINA 1998-03-22 (F)
LOI LO99821 - bluebelton

| | | | |
|---|--|--|--|
| | <p><u>BORG</u> 2005-05-08 (M) LOI LO05105984 - lemon</p>  | <p><u>ASTRO</u> 1994-01-10 (M) LOI ST494869 - lemon</p> |  <p><u>ARNO</u> 1988-04-17 (M) LOI ST374735 (Ch. Int. Lav., Camp. Ripr., Ch. Ital. Lav.) - lemon</p> |
| <p>Mère <u>TARTALKY'S VILAINE</u> 2014-01-18 (F) LOI LO1444342 - bluebelton</p> | <p><u>NIELLA</u> 2009-04-13 (F) LOI LO1068599 - bluebelton</p>  | <p><u>JARA ALESS SETTER</u> 2000-08-12 (F) LOI LO0128660 - lemon</p> |  <p><u>LERRY</u> 1997-02-14 (M) LOI ST555862 (Ch GQ, Ch IT) - bluebelton</p> <p><u>FRANZINI GIUDI</u> 1996-12-10 (F) LOI ST553219 - lemon</p> |
| | | <p><u>MARK</u> 2002-11-15 (M) LOI LO03104531 - lemon</p> | <p><u>STING</u> 1998-07-04 (M) LOI LO9977173 - bluebelton</p> <p><u>LEA</u> 1998-04-21 (F) LOI LO9975932 - lemon</p> |
| | | <p><u>CUNA</u> 2002-05-29 (F) LOI LO02116548 - lemon</p> | <p><u>CHIM</u> 1998-02-12 (M) LOI LO98111160 - lemon</p> <p><u>CORI</u> 1996-01-12 (F) LOI ST538999 - lemon</p> |

Eleveur : TARTARI ADRIANO / Propriétaire : Mini Gabriele
Puce : 380260100732431
Estimation des points au pédigrée : 18

Taux de consanguinité (estimation) : 3.3 %

RADENTIS GIAN (5,6,6,6,7,7,7 X 5,6,7,7) : 0.012451
RADENTIS SBRANCO (4,4,5 X 5) : 0.010376
DECOR LOTI (6,7,7,7,7,7,7,7,8,8,8,8,8,8,8 X 6,7,8,8,8,8,8,8,8) : 0.005859
RADENTIS BORG (5,5,5,6,6 X 6) : 0.001465
DUN DEL MESCHIO (7,7,8,8,8,8,8,8 X 7,8,8,8) : 0.000793
MARK DELLA BASSANA (6 X 6) : 0.000549
EMO DELLA TRAPPOLA (7 X 6,7,7) : 0.000488
ROVAL MOZART (7,7,8,8 X 7) : 0.000366
LOPEZ DELLA BASSANA (8,8,8 X 8,8,8) : 0.000122
GIP DELLA BASSANA (7 X 7) : 0.000122
ITRI DELLA BASSANA (7 X 7,8,8) : 0.000122
CIBA DELLA BASSANA (7 X 7,8) : 0.000061
LIRIS DEL SOLE (8 X 8) : 0.000031



Note : les données ne sont pas garanties. Elles ont été entrées par les membres sans garantie d'exactitude.