

ORIOLENSIS QUEEN

2022-06-05 (F) LOP 625463
Couleur : Noi.Mar.Fau.PBl.Env (tricolore)
[fiche affixe](#)



Père
CUCCA'S MOSER
2018-07-04 (M)
LOI LO18119945
- lemon



ORIOLENSIS QUOD 2016-12-28 (M)
LOI LO1743008 (CH(I)T, CH GQ) - lemon



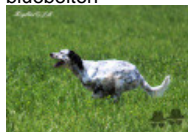
CUCCA'S YTALIA 2014-12-24 (F) LOI
LO151464 - liver tricolore



INO 2012-07-13 (M) LOI LO12122070
(Ch. Ital. Lav.) - bluebelton



CUCCA'S OBLADI 2010-09-30 (F)
LOI LO10171820 (Ch. Ital. Lav.) -
bluebelton



CUCCA'S RAYBAN 2006-07-04 (M)
LOI LO0740771 (Camp. Ital. Lav., Camp.
Tr. (CH GQ)) - liver



CUCCA'S OBLADA' 2010-09-30 (F)
LOI LO10171827 - lemon

MITO 2006-03-03 (M) LOI LO0678098
- bluebelton

KIRA 2010-04-16 (F) LOI
LO10111067 (Ch. Ital. Lav.) - bluebelton

ORIO 2002-05-14
(M) LOI
LO02116390
(Camp. Tr. (Ch GQ)) -
bluebelton








CUCCA'S SAXA 2007-01-06 (F)
LOI LO0754389 (Camp. Ripr.) -
lemon

**DODGE DEL
TIRSO** 1998-02-14
(M) LOI LO9942918
(Ch IT IT-T, CHIB,
Camp. Tr. (Ch GQ)) -
bluebelton

CUCCA'S ESTER
2004-05-01 (F) LOI
LO0477644 - liver

ORIO 2002-05-14
(M) LOI
LO02116390
(Camp. Tr. (Ch GQ)) -
bluebelton

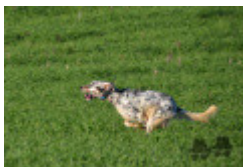
CUCCA'S SAXA 2007-01-06 (F)
LOI LO0754389 (Camp. Ripr.) -
lemon

<p>Mère <u>ORIOLENSIS COMETA</u> 2018-06-01 (F) LOI LO18119637 - bluebelton</p>	<p><u>ZORRO</u> 2012-12-10 (M) LOI LO1327900 - bluebelton</p>	<p><u>MITO</u> 2006-03-03 (M) LOI LO0678098 - bluebelton</p>	<p> <u>TODAY</u> 2001-05-07 (M) LOI LO01146212 (Camp. Tr. (Ch GQ)) - bluebelton</p>
		<p><u>AMI</u> 2007-01-08 (F) LOI LO0776048 - liver</p>	<p> <u>KAPO</u> 2003-11-10 (M) LOI LO0439835 (CH GQ, CH IT) - bluebelton</p>
		<p><u>ORIO</u> 2002-05-14 (M) LOI LO02116390 (Camp. Tr. (Ch GQ)) - bluebelton</p> <p></p>	<p> <u>TODAY</u> 2001-05-07 (M) LOI LO01146212 (Camp. Tr. (Ch GQ)) - bluebelton</p>
		<p><u>CUCCA'S OBLADI</u> 2010-09-30 (F) LOI LO10171820 (Ch. Ital. Lav.) - bluebelton</p> <p></p>	<p><u>CUCCA'S SAXA</u> 2007-01-06 (F) LOI LO0754389 (Camp. Ripr.) - lemon</p> <p></p>
			<p><u>SIRIA DEI FELINI</u> 2004-02-20 (F) LOI LO0492766 - bluebelton</p>
			<p><u>TOSCA DELLE OROBICHE</u> 1999-11-19 (F) LOI LO0035313 (Camp. Ripr.) - bluebelton</p>
			<p> <u>RADENTIS NOMAR</u> 1998-03-22 (M) LOI LO98133353 ((CHGQ CHIT / CHIT.B)) - liver</p>
			<p><u>GIBELTARIK BESSIE</u> 2000-12-11 (F) LOI LO03116018 (Camp. Ripr.) - lemon</p>

Eleveur : Claudio Giavarini / Propriétaire : Hugo Ferreira (hugomferreira81@gmail.com)
 Puce : 380260160402972
 Sang italien (estimation) : 100 %
 Estimation des points au pédigrée : 22

Taux de consanguinité (estimation) : 14.1 %

CUCCA'S OBLADI (3 X 2) : 0.062500
CUCCA'S SAXA (4,4 X 3) : 0.016846
MITO (4 X 3) : 0.015625
ORIO (4,4 X 3) : 0.015625
TODAY (5,5,5 X 4,4) : 0.011719
RADENTIS NOMAR (5,5,5 X 4) : 0.004395
GIBELTARIK BESSIE (5,5,5 X 4) : 0.004028
DODGE DEL TIRSO (4,6,6,6 X 5) : 0.004028
DECOR LOTI (7,7,7,8 X 8,8,8,8,8,8,8,8) : 0.001770
RADENTIS SBRANCO (6,6,6,7,7,7 X 5,6) : 0.000977
ILIO CAMP (6,6 X 5,6) : 0.000977
ROVAL MOZART (6,8,8,8 X 7,8,8,8) : 0.000549
NEGUS (7,7 X 6,7,7) : 0.000488
RADENTIS GIAN (7,8,8,8,8,8 X 7,7,8,8,8) : 0.000427
RADENTIS BORG (7,7,7,7,7,8,8,8 X 6,6,7) : 0.000244
AMBO DEL VARO (6,8,8,8,8,8,8 X 7,7) : 0.000244
RALF DEL DIANELLA (8 X 7) : 0.000061
OLAF DEI TRE PONTI (8 X 8) : 0.000031



Note : les données ne sont pas garanties. Elles ont été entrées par les membres sans garantie d'exactitude.

