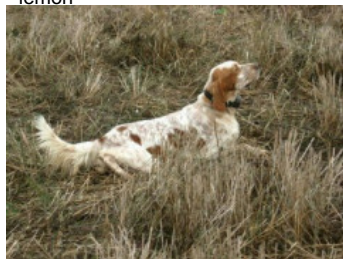


**RADENTIS FIAMMA 3**

2012-02-29 (F) LOI LO1251764  
Couleur : bianco arancio (lemon)  
[fiche affixe](#)



Père  
**RADENTIS IGOR**  
2007-07-24 (M)  
LOI LO0858253  
- lemon



**RADENTIS BOSS** 1997-01-13 (M)  
LOI ST559823 - lemon



**RADENTIS SBRANCO** 1991-07-01  
(M) LOI ST448908 (CH IB, Ch. Int. Lav.) -  
lemon



**ODE DEL SOLE** 1993-09-10 (F) LOI  
ST490145 - liver

**RADENTIS BORG**  
1987-04-30 (M) LOI  
ST350267 (Ch. Int.  
Lav., CH GQ, Ch. Ital.  
Lav., Camp. Ripr.) -  
lemon

lemon

**RADENTIS OLA** 1984-09-30 (F) LOI  
ST298174 - lemon

**AMBO DEL VARO**  
1987-10-04 (M) LOI  
ST360725 (Ch. Int. Lav.) -  
lemon

**JANA DEL SOLE** 1987-01-05 (F) LOI  
ST342352 - liver

**LERRY** 1997-02-14 (M) LOI  
ST555862 (Ch GQ, Ch IT) - bluebelton



**RADENTIS FATA** 2003-05-22 (F) LOI  
LO0444018 - lemon



**GIBELTARIK BLONDIE** 2000-12-11  
(F) LOI LO02122551 (CHIT.T) - lemon



**ARNO** 1988-04-17  
(M) LOI ST374735  
(Ch. Int. Lav., Camp.  
Ripr., Ch. Ital. Lav.) -  
lemon

lemon

**PICENUM UNGA**  
1990-10-02 (F) LOI  
ST430406 (CH GQ) -  
liver










liver

**DODGE DEL  
TIRSO** 1998-02-14  
(M) LOI LO9942918  
(Ch IT IT-T, CHIB,  
Camp. Tr. (Ch GQ)) -  
bluebelton

bluebelton

**RADENTIS ERICA**  
1995-05-25 (F) LOI  
ST531494 ((CH(I)B)) -  
lemon

lemon

<p>Mère</p> <p><u>RADENTIS NUVOLO</u> 2006-01-03 (F) LOI LO0652998 - bluebelton</p>	<p><u>RADENTIS NOMAR</u> 1998-03-22 (M) LOI LO98133353 ((CHGQ CHITF / CHIT.B)) - liver</p> 	<p><u>RADENTIS SBRANCO</u> 1991-07-01 (M) LOI ST448908 (CH IB, Ch. Int. Lav.) - lemon</p> 	<p><u>RADENTIS BORG</u> 1987-04-30 (M) LOI ST350267 (Ch. Int. Lav., CH GQ, Ch. Ital. Lav., Camp. Ripr.) - lemon</p> 	
	<p><u>RADENTIS SWING</u> 2001-10-24 (F) LOI LO0230672 - lemon</p>	<p><u>KELLI DELLA MARIKA</u> 1995-08-06 (F) LOI ST530204 (Ch. Ital. Lav.) - bluebelton</p> 	<p><u>RADENTIS BORG</u> 1987-04-30 (M) LOI ST350267 (Ch. Int. Lav., CH GQ, Ch. Ital. Lav., Camp. Ripr.) - lemon</p> 	<p><u>ZARA DELLA MARIKA</u> 1993-06-10 (F) LOI ST482071 - bluebelton</p>
		<p><u>BORG</u> 1991-04-08 (M) LOI ST441773 - lemon</p> 	<p><u>RADENTIS GIAN</u> 1983-01-02 (M) LOI ST258470 (Ch. Ital. Lav., Ch. Int. Lav., Camp. Ripr.) - lemon</p> 	<p><u>KIRA</u> 1984-10-03 (F) LOI ST294874 - bluebelton</p>
		<p><u>RADENTIS NERINA</u> 1998-03-22 (F) LOI LO99821 - bluebelton</p>		<p><u>RADENTIS SBRANCO</u> 1991-07-01 (M) LOI ST448908 (CH IB, Ch. Int. Lav.) - lemon</p> 
			<p><u>KELLI DELLA MARIKA</u> 1995-08-06 (F) LOI ST530204 (Ch. Ital. Lav.) - bluebelton</p> 	

Propriétaire : Lando Montagna (Landom83@hotmail.it)

Puce : 380260040782695

Estimation des points au pédigrée : 17

## Taux de consanguinité (estimation) : 12.4 %

RADENTIS SBRANCO (3,5 X 3,4) : 0.062714  
RADENTIS GIAN (5,5,7,7,7 X 4,5,5,6,6) : 0.020752  
RADENTIS BORG (4,6 X 4,4,5,5) : 0.014648  
DECOR LOTI (6,6,6,6,7,7,7,8,8,8,8 X 5,6,6,6,6,7,7,7,7,8) : 0.014618  
DUN DEL MESCILIO (6,7,7,7,8,8,8,8,8,8,8 X 6,6,7,7,7,7,8,8,8,8,8,8) : 0.009277  
ROVAL MOZART (6 X 6,7) : 0.000732  
CRISMANI OLAF (7,8,8,8,8 X 7,7,8,8,8,8) : 0.000244  
PINO DI CEREÀ (7,8 X 7,7,8,8) : 0.000183  
TRUEBA DELLA FAGIANA (8,8 X 8,8,8,8) : 0.000122  
DAGA (8,8,8 X 7,8,8) : 0.000122  
LINDA DI CEREÀ (8,8 X 8,8) : 0.000061  
LINDO 3 DI CEREÀ (8,8 X 8,8) : 0.000061  
MUR (7,8 X 8) : 0.000061  
VIMON REVEL (8 X 8,8) : 0.000031  
DAMA 17 (8 X 8,8) : 0.000031  
LEM DEL RESEGONE (8 X 8) : 0.000031  
DICH DI VAL D'IDICE (8 X 8,8) : 0.000031



Note : les données ne sont pas garanties. Elles ont été entrées par les membres sans garantie d'exactitude.

