

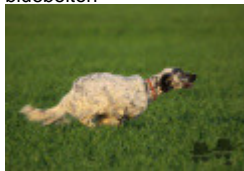
ARAVIS DU BOIS D'AUTOMNE

2025-09-20 (F) LOF 299322
Couleur : Noï. PBI.Env.Mou. (bluebelton)
[fiche affixe](#)



hosted by setter-anglais.fr

MODJO DE LA PLUME DU PÉVÈLE
2016-06-20 (M) LOF 247517/42482
(CH GQ, CHRACE GQ, CH IT GQ) - bluebelton



Père
UKA DU PUY DU FOUGEROUX
2023-12-14 (M)
LOF 289755/48986
(TAN)
- bluebelton



PIANA DU PUY DU FOUGEROUX
2019-04-11 (F) LOF 261282/52673
(TAN, TR, CH P, CH IT) - bluebelton



H DE FEUNTEUN BLEIS 2012-08-09
(M) LOF 224372/39370 (CHGQ, CHIT,
CHRACE GQ, VOF/GQ) - bluebelton



NIKITA DE CORIAM 2014-07-12 (F)
LOF 242948/47601 (CH-FTP) - tricolore



HARPER DE BÉHIGO 2012-01-12
(M) LOF 220125/37326 (TR CH-FTP
CH-FGT CH.T. TRGQ CHITF) - bluebelton



MIYA DU PUY DU FOUGEROUX
2016-06-21 (F) LOF 246464/49570
(TAN) - bluebelton



CYCLONE DU BARALAN 2007-08-03
(M) LOF
196686/032337 (TR, CH
P, CH IT) - bluebelton



BOHEME DE L'OREE DU BOIS BECASSES
2006-06-28 (F) LOF
188159/36230 (TR, CH
P, CH T) - bluebelton



NATAN 2012-10-03
(M) LOI LO12157969
(CH IT GQ, Camp. TR. (CH
GQ), CH(I)T) - bluebelton



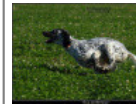
HOT LOVE DE CORIAM
2008-08-29 (F)
LOSH1049371 -
bluebelton



USSAN DU MAS D'EYRAUD 2003-10-21
(M) LOF 173466/28517
(CHGQ TRGQ CHITF) -
lemon



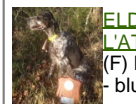
EVA DE BÉHIGO
2009-09-21 (F)
LOF 206713/40860
(TR) - bluebelton














HORUS DES SONNAILLES DU HAUT DAVY 2012-10-10
(M) LOF 225407/38374 (TR,
CH P) - lemon



ELDA DU MOULIN DE L'ATLANTIQUE 2009-05-16
(F) LOF 203612/40793 (TAN)
- bluebelton

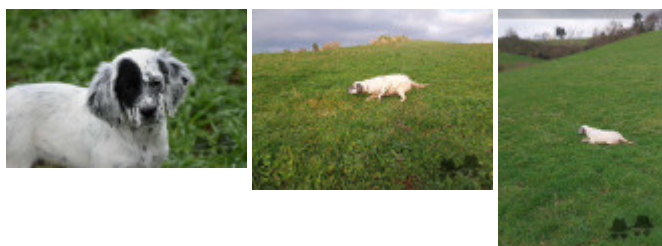


<p>Mère <u>SCARLETT DU BOIS D'AUTOMNE</u> 2021-04-28 (F) LOF 272633/55998 (TAN) - bluebelton</p> 	<p><u>H DE FEUNTEUN BLEIS</u> 2012-08-09 (M) LOF 224372/39370 (CHGQ, CHIT, CHRACE GQ, VOF/GQ) - bluebelton</p> 	<p><u>CYCLONE DU BARALAN</u> 2007-08-03 (M) LOF 196686/032337 (TR, CH P, CH IT) - bluebelton</p> 	<p><u>BIG JIM</u> 2000-12-01 (M) LOI LO0188207 (CH GQ, Ch. Int. Lav., Camp. Ripr., Ch. Ital. Lav.) - liver</p> 
	<p><u>ISIS</u> 2013-06-09 (F) LOF 228253/45858 (TAN) - lemon</p> 	<p><u>BOHEME DE L'OREE DU BOIS BECASSES</u> 2006-06-28 (F) LOF 188159/36230 (TR, CH P, CH T) - bluebelton</p> 	<p><u>TIM DE ROCHE VILAINE</u> 2002-02-06 (M) LOF 163324/27344 (CH P, TR GQ) - bluebelton</p> 
		<p><u>FIDGI DU PLATEAU DES ERYTHRONES</u> 2010-03-06 (M) LOF 208552/36434 - bluebelton</p>	<p><u>UNE BELLE DE L'OREE DU BOIS BECASSES</u> 2003-07-01 (F) LOF 171912/33599 (TR, CH P, CH T) - bluebelton</p> 
		<p><u>DALIKA DU PLATEAU DES ERYTHRONES</u> 2008-05-25 (F) LOF 199608/43996 - bluebelton</p> 	<p><u>ULYSSE DE LA DIANE DU DROUVENANT</u> 2003-05-19 (M) LOF 173395/28590 (Ch T) - bluebelton</p> 
			<p><u>ULCIA</u> 2003-05-30 (F) LOF 170608/33099 (TAN) - tricolore</p>
			<p><u>UFO DE LA PLUME DU PÉVÉLE</u> 2003-06-05 (M) LOF 171946/28054 (TR) - bluebelton</p> 
			<p><u>BRUG DE KELERCUN</u> 2006-09-15 (F) LOF 189231/36592 - bluebelton</p>

Eleveur : Faure Christophe / Propriétaire : Echallier Bastien (06 34 14 16 48, bastien.echallier@laposte.net)
Puce : 250269101421579
Sang italien (estimation) : 58 %
Estimation des points au pédigrée : 28

Taux de consanguinité (estimation) : 7.1 %

H DE FEUNTEUN BLEIS (3 X 2) : 0.062500
TIM DE ROCHE VILAINE (5 X 4,5) : 0.001953
FIERO (5 X 5) : 0.001953
ARNO (6,7,8 X 6,6,7) : 0.001099
COW BOY DES RIVES DE L'ESTRIGON (8,8,8,8,8 X 7,7,8) : 0.000610
RADENTIS SBRANCO (7,7,8,8 X 6) : 0.000488
FRANCINI'S JEFFE (7,7 X 7,7) : 0.000488
NEGUS (8,8,8,8 X 7,7) : 0.000427
RADENTIS GIAN (7,8 X 7,8,8,8) : 0.000305
BOI (8,8 X 7,7,8,8) : 0.000275
FRANCINI'S LUCA (8,8,8 X 8,8,8,8) : 0.000244
HYPER DE L'ECHO DE LA FORET (7 X 6) : 0.000244
ALMER (8 X 8,8,8,8,8) : 0.000153
DEESSE DU VAL D'ARZ (7 X 7) : 0.000122
RADENTIS BORG (8,8,8 X 7) : 0.000061
ECHO (8 X 7,7) : 0.000061
COOL DE CODORNIS (7 X 8) : 0.000061
DECOR LOT (8 X 8,8,8) : 0.000061
DERBY DES SEPT PROVINCES (8 X 7) : 0.000061
DEESSE DU VAL CLAIR (8 X 7,8,8) : 0.000031
BASSINO (8 X 7,8,8) : 0.000031
ROVAL SLY (8 X 8) : 0.000031



Note : les données ne sont pas garanties. Elles ont été entrées par les membres sans garantie d'exactitude.